



Holly Bush Vale

Hampstead Village, NW3

Asking Price £1,150,000

A two bedroom, two bathroom first floor flat, exceptionally well located in the centre of Hampstead Village, just a few yards from the Everyman Cinema, and all the shops, cafes and restaurants that Hampstead Village provides.

This charming property benefits from its own entrance and a stunning reception room with wood floors, a fireplace and high ceilings, kitchen/dining room with wood floors and direct access to a private decked terrace.

Hampstead Underground (Northern Line) is located less than one hundred yards from the flat. Sole agent.



Holly Bush Vale

Hampstead Village, NW3

- Two bedrooms
- Two bathrooms
- Wood floors
- High ceilings
- Private decked terrace
- 18' x 7' store room
- 100 yards to the Northern Line



Tenure: Leasehold 102 years remaining

Service Charge: £0

Ground Rent: £300 per annum

Local Authority: Camden

Council Tax Band: E

Energy Efficiency Rating		
	Current	Potential
Very energy efficient - lower running costs		
(94-100) A		
(81-93) B		
(69-80) C		
(55-68) D		
(39-54) E	49	67
(21-38) F		
(1-20) G		
Not energy efficient - higher running costs		
England, Scotland & Wales		EU Directive 2002/91/EC

Chestertons Hampstead Sales

55-56 Hampstead High Street

Hampstead

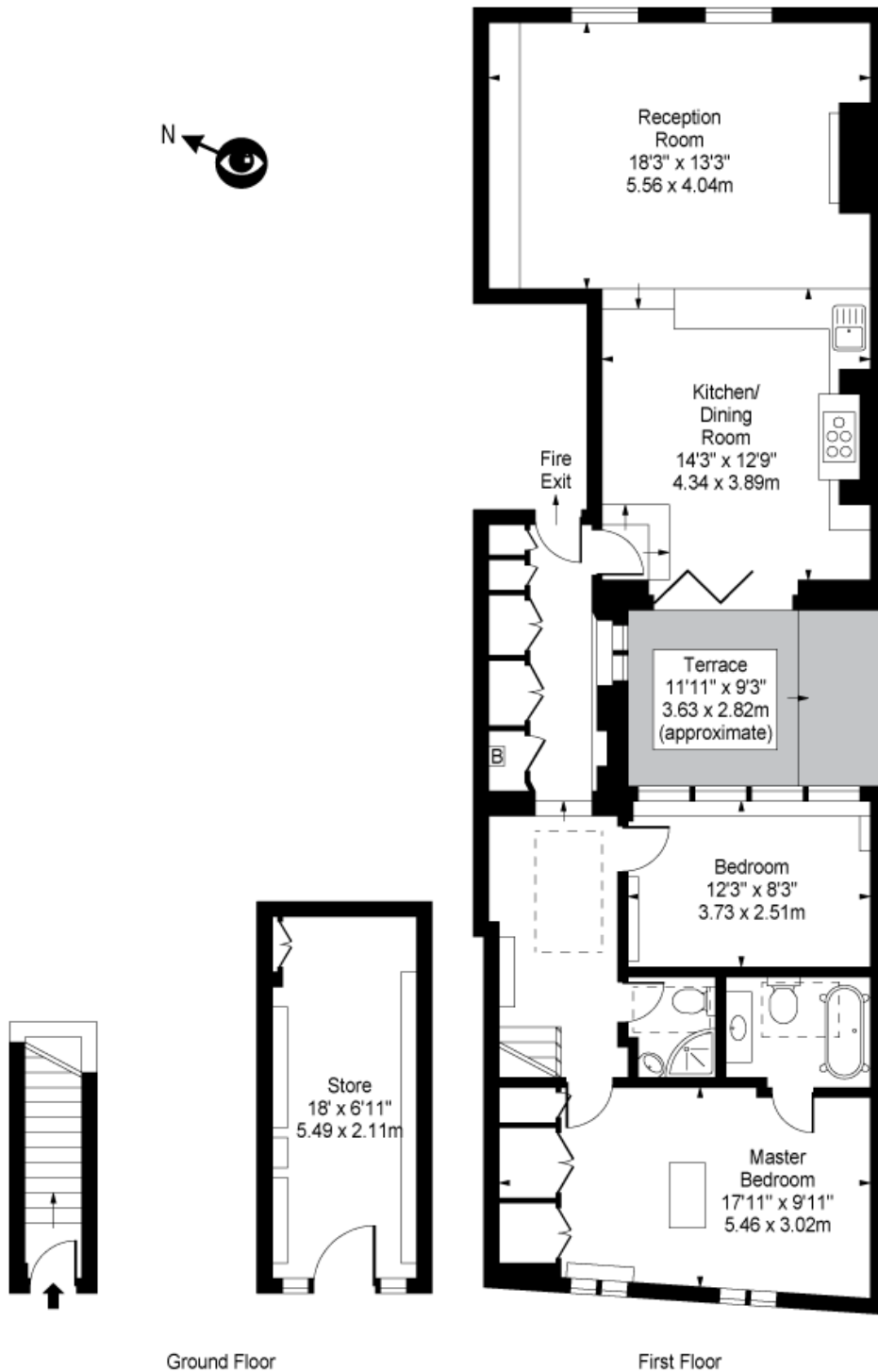
NW3 1QH

hampstead@chestertons.co.uk

020 7794 3311

chestertons.co.uk

**Holly Bush Vale,
Hampstead Village, NW3**



Approx Gross Internal Area 1098 Sq Ft - 102.00 Sq M
(Including Store)

For Illustration Purposes Only - Not To Scale
Floor Plan by www.bpmmediagroup.com
Ref: No. P54517

