



Fordwych Road

London, NW2

Asking Price £1,050,000

A fabulous four bedroom flat set over the first and second floors of this semi-detached period conversion.

This charming property offer a 19'2 x 17'4 reception room and a separate dining room, both with wood floors and is located approximately half a mile from the Jubilee Line.



Fordwych Road

London, NW2

- Upper duplex flat
- First and second floor
- Four bedrooms
- 19'2 x 17'4 reception room
- 1,425 square feet excluding the loft
- Communal garden
- 0.6 miles to the Jubilee Line



Tenure: Leasehold 169 years remaining.

Service Charge: Awaiting.

Ground Rent: £0

Local Authority: Camden

Council Tax Band: E

Energy Efficiency Rating		
	Current	Potential
Very energy efficient - lower running costs		
A (94-100)		
B (81-93)		
C (69-80)		75
D (55-68)	53	
E (39-54)		
F (21-38)		
Not energy efficient - higher running costs		
G (1-20)		
England, Scotland & Wales EU Directive 2002/91/EC		

Chestertons Hampstead Sales

55-56 Hampstead High Street

Hampstead

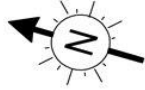
NW3 1QH

hampstead@chestertons.co.uk

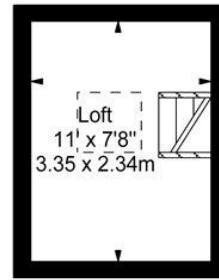
020 7794 3311

chestertons.co.uk

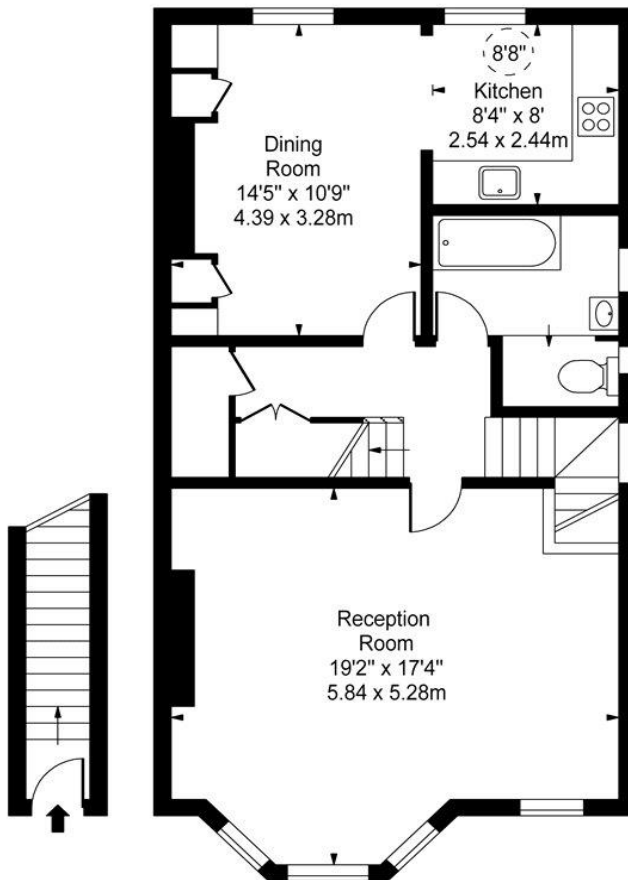
**Fordwych Road,
Shoot Up Hill, NW2**



() - Ceiling Height

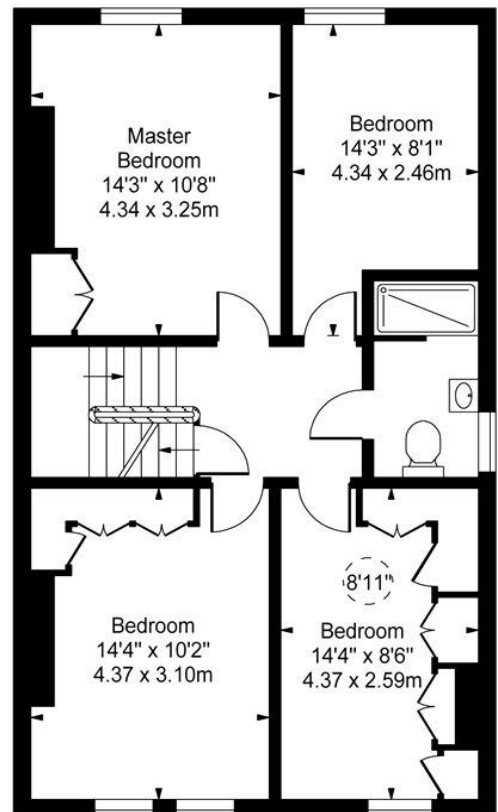


Loft



Raised Ground Floor

First Floor



Second Floor

Approx Gross Internal Area 1425 Sq Ft - 132.38 Sq M
(Excluding Loft)

Loft Area 85 Sq Ft - 7.90 Sq M

For Illustration Purposes Only - Not To Scale

www.goldlens.co.uk

Prepared for Chestertons

Ref. No. 012190.1E

