



Highfield Mews

Compayne Gardens, West Hampstead NW6

Asking Price £1,675,000

Located within an exclusive and secure gated development, this impressive three-bedroom house in the heart of West Hampstead offers excellent accommodation, comprising 2,254 square feet.

This lovely home features three bedrooms, three modern bathrooms and boasts a bright, south-facing garden with convenient side access for maintenance. Additional benefits include a 19' x 17' reception, a conservatory and a large garage, ideal for secure parking or extra storage.

The property enjoys a prime location in West Hampstead, just 0.2 miles from a vibrant mix of shops, cafes, restaurants and the Jubilee Line, providing excellent transport links to central London.

Offered on a leasehold basis with 975 years remaining, this home presents a rare opportunity to acquire a desirable secure home in one of West Hampstead's most sought-after locations. Sole agent.



Highfield Mews

Compayne Gardens, West Hampstead NW6

- Secure gated development
- Three bedroom house
- 2,254 square feet
- Three bathrooms and a guest WC
- South facing garden with side access
- Large garage
- One communal visitor's parking space
- 0.2 miles to the Jubilee Line
- 0.2 miles to shops, cafes and restaurants
- Leasehold 975 years remaining
- New boiler in 2024



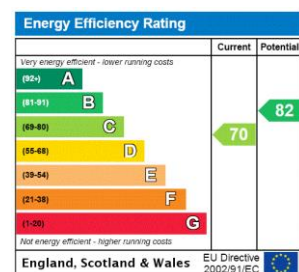
Tenure: Leasehold 974 years 8 months remaining as of April 2025

Service Charge: £3,103 per annum. There is a sinking fund.

Ground Rent: £250 per annum.

Local Authority: Camden.

Council Tax Band:

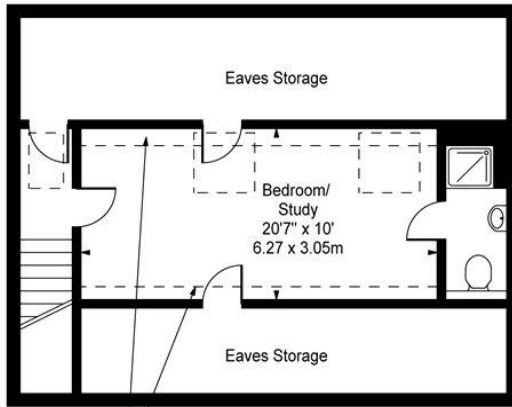


Chestertons Hampstead Sales

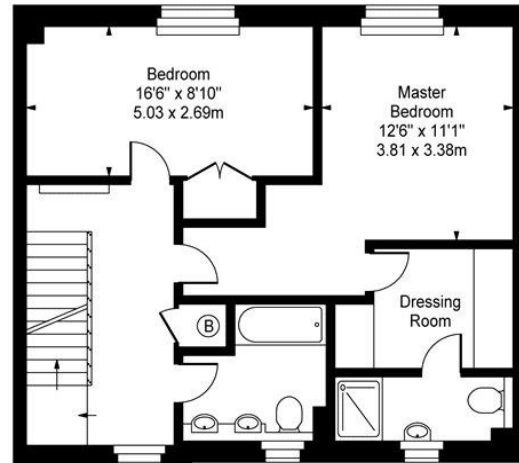
55-56 Hampstead High Street
 Hampstead
 NW3 1QH
hampstead@chestertons.co.uk
 020 7794 3311
chestertons.co.uk



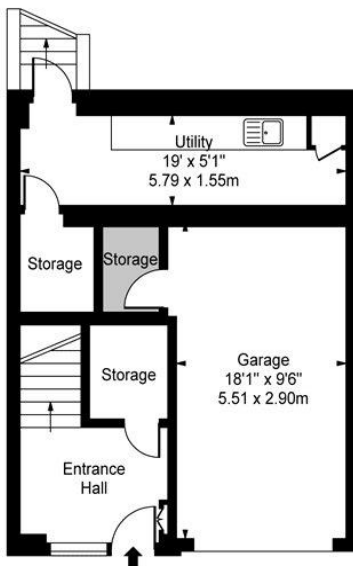
Highfield Mews, Compayne Gardens, NW6



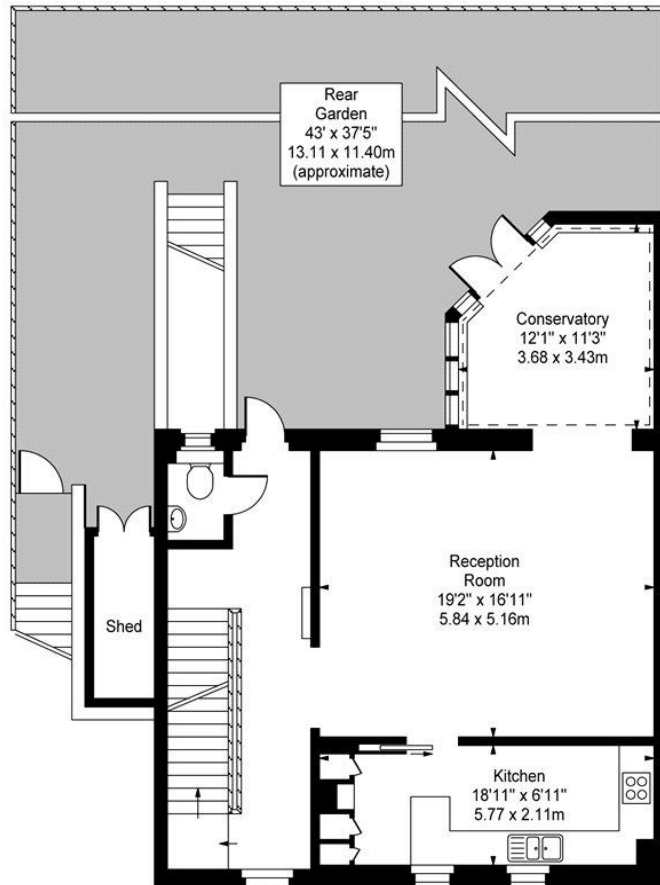
Restricted Height Area
Second Floor



First Floor



Lower Ground Floor



Ground Floor

Approx Gross Internal Area **2254 Sq Ft - 209.40 Sq M**
(Including Garage & Restricted Height Area)
(Excluding Eaves Storage & Shed)

For Illustration Purposes Only - Not To Scale
www.goldlens.co.uk
Prepared for Chestertons
Ref. No. 010624K

