



Finchley Road

Hampstead, NW3

Asking Price £1,195,000

A handsome semi-detached four bedroom house comprising over 2,000 square feet of accommodation over only two floors, with the benefit of off street parking to the front and a private south west facing garden.



Finchley Road

Hampstead, NW3

- Semi-detached house
- Four bedrooms & three bathrooms
- Three receptions
- Parquet floor
- 2,037 square feet
- South west facing garden
- Off street parking



Tenure: Freehold
Service Charge: £0
Ground Rent: £0
Local Authority: Camden
Council Tax Band: G

Energy Efficiency Rating		
	Current	Potential
Very energy efficient - lower running costs		
A (91-100)		
B (81-90)		
C (69-80)		
D (55-68)		66
E (39-54)	47	
F (21-38)		
G (1-20)		
Not energy efficient - higher running costs		
England, Scotland & Wales		EU Directive 2002/91/EC

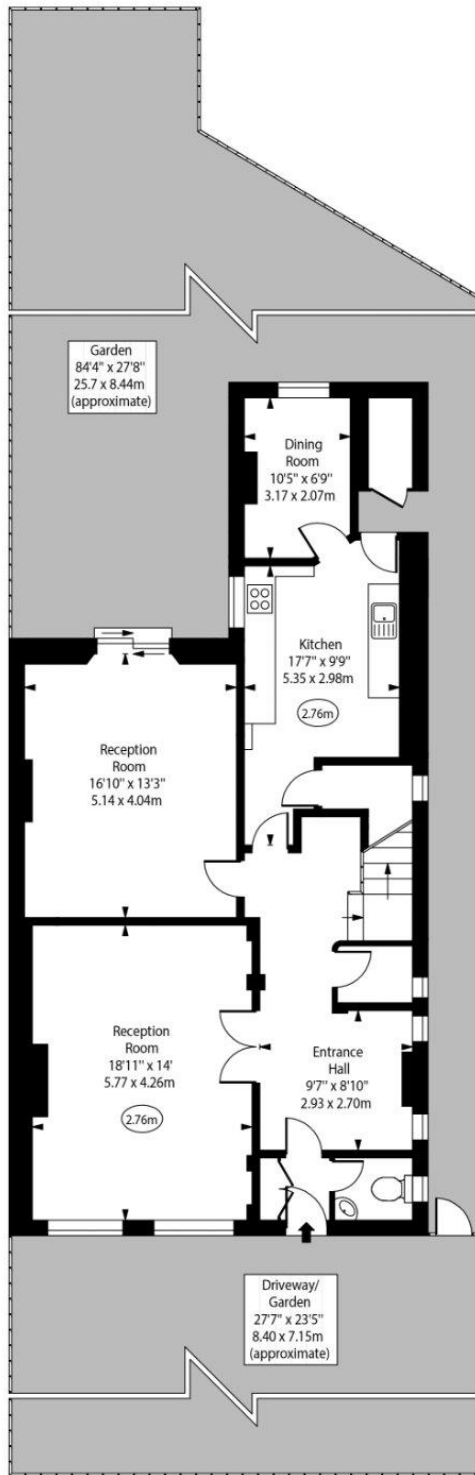
Chestertons Hampstead Sales

55-56 Hampstead High Street
Hampstead
NW3 1QH
hampstead@chestertons.co.uk
020 7794 3311
chestertons.co.uk

Finchley Road, NW3



○ - Ceiling Height



Ground Floor



First Floor

Approx Gross Internal Area 2037 Sq Ft - 189.24 Sq M

For Illustration Purposes Only - Not To Scale
www.goldlens.co.uk
 Prepared for Chestertons
 Ref. No. 026138J

