



# Goldhurst Terrace

South Hampstead, NW6

Asking Price £1,090,000

A bright and spacious three bedroom split level apartment on the top two floors of a Victorian red brick period building.

The apartment benefits from a large reception room with original fireplace, separate kitchen, principal bedroom with en-suite bathroom and built- in storage.

Located 0.2 miles from South Hampstead Overground, 0.3 miles from Finchley Road Underground (Jubilee and Metropolitan Lines) and Waitrose.

The property is being sold with a 150 year lease.





# Goldhurst Terrace

South Hampstead, NW6

- Three bedrooms
- Two bathrooms
- 1245 square feet
- 0.3 miles from Finchley Road Underground





---

**Tenure:** Leasehold 149 years 7 months remaining  
**Service Charge:** £2,600 per annum including building insurance.  
**Ground Rent:** £0  
**Local Authority:** Camden  
**Council Tax Band:** D

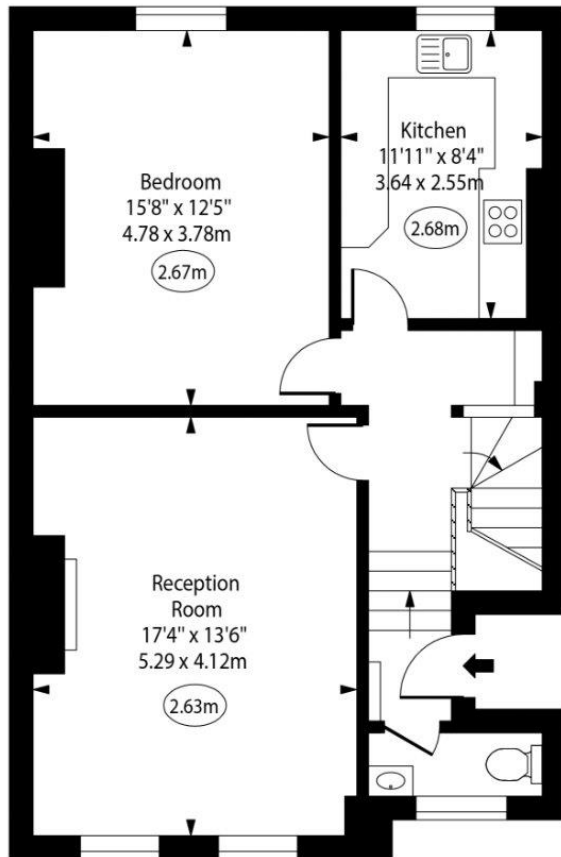
---

***Chestertons Hampstead Sales***

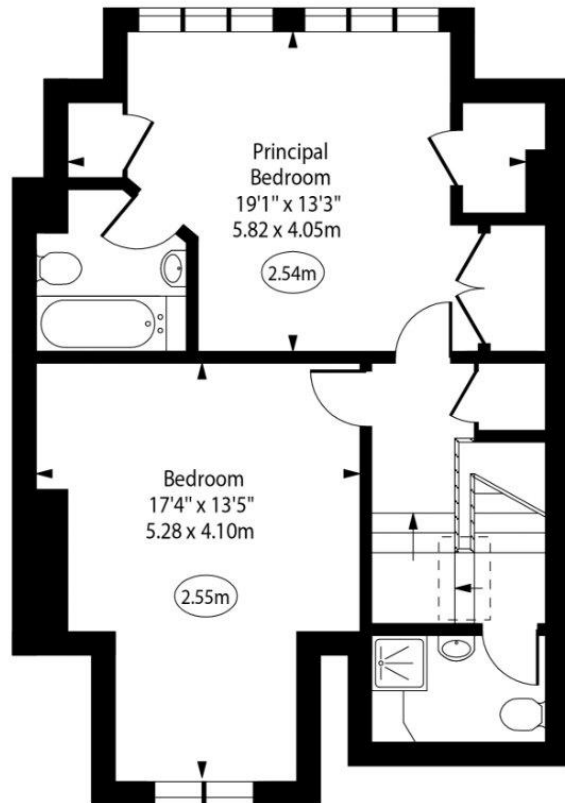
55-56 Hampstead High Street  
Hampstead  
NW3 1QH  
hampstead@chestertons.co.uk  
020 7794 3311  
chestertons.co.uk

# Upper Duplex, Goldhurst Terrace, NW6

○ - Ceiling Height



Second Floor



Third Floor

Approx Gross Internal Area 1245 Sq Ft - 115.66 Sq M

For Illustration Purposes Only - Not To Scale  
[www.goldlens.co.uk](http://www.goldlens.co.uk)  
 Prepared for Chestertons  
 Ref. No. 025683R

