



Holmefield Court

Belsize Grove, Belsize Park NW3

Asking Price £375,000

A one bedroom flat comprising 536 square feet and requiring refurbishment throughout. The property is situated on the third floor of a purpose built block served by a lift and benefits from a lease with over 900 years remaining.

Holmefield Court is superbly located on Belsize Grove in Belsize Park, immediately off the main High Street, offering access to numerous shops, cafes, restaurants and a cinema. Belsize Park Underground (Northern Line) is located just 0.1 miles away.

Sole agent.

Leasehold 999 years from 25 December 1933 (less 20 days). 907 years remaining.

Service charge £5,206 per annum including heating and hot water.



Holmefield Court

Belsize Grove, Belsize Park NW3

- Third floor one bedroom flat
- Refurbishment required
- Lift and caretaker
- Close to shops and transport links
- Service charge of £5,206 per annum
- Leasehold 907 years remaining



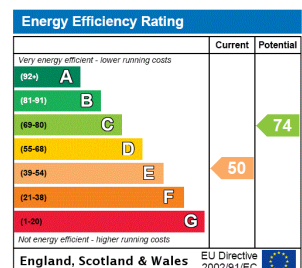
Tenure: Leasehold 907 years 3 months remaining as of October 2024.

Service Charge: £5,206 per annum including heating and hot water.

Ground Rent: £25 per annum.

Local Authority: Camden.

Council Tax Band: D.



Chestertons Hampstead Sales

55-56 Hampstead High Street

Hampstead

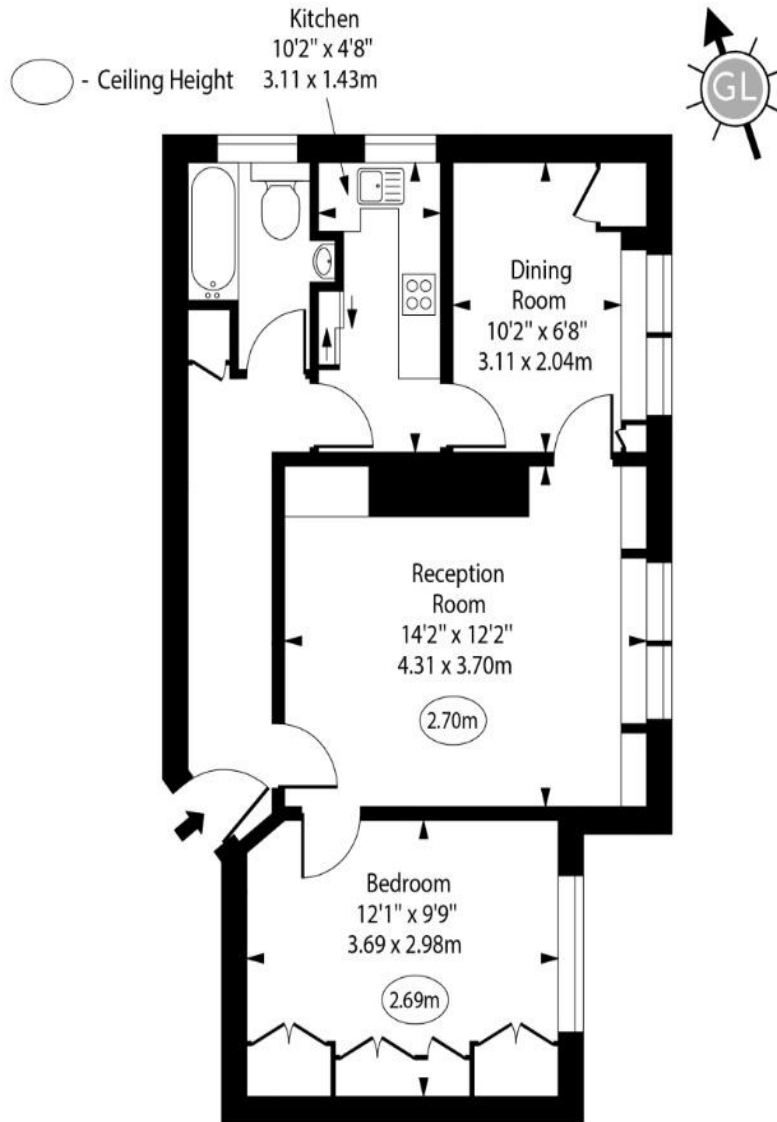
NW3 1QH

hampstead@chestertons.co.uk

020 7794 3311

chestertons.co.uk

Holmefield Court,
Belsize Grove,
Belsize Park, NW3



Third Floor

Approx Gross Internal Area 536 Sq Ft - 49.79 Sq M

For Illustration Purposes Only - Not To Scale

www.goldlens.co.uk

Prepared for Chestertons

Ref. No. 024195J

