



Heathway Court

West Heath Road, Hampstead NW3

Asking Price £950,000

Situated on the third floor of this purpose built block served by a lift and caretaker, a spacious three bedroom flat presented in excellent condition throughout and benefitting from a reception room and dining room with direct access to a private south facing balcony.

Heathway Court is superbly positioned close to various bus links, shops, amenities and Golders Hill Park and tennis courts. Golders Green Underground (Northern Line) is located 0.6 miles from the property. Sole agent.



Heathway Court

West Heath Road, Hampstead NW3

- Third floor flat
- 1,300 square feet
- Three bedrooms
- Two bathrooms
- Guest W.C
- South facing reception
- South facing balcony



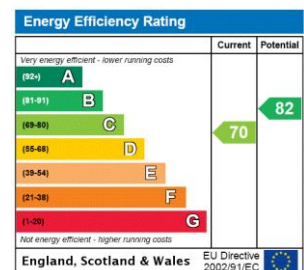
Tenure: Share of Freehold and a lease of 980 years remaining.

Service Charge: £7,147 including heating and hot water.

Ground Rent: £0

Local Authority: Barnet

Council Tax Band: E



Chestertons Hampstead Sales

55-56 Hampstead High Street

Hampstead

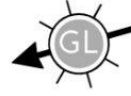
NW3 1QH

hampstead@chestertons.co.uk

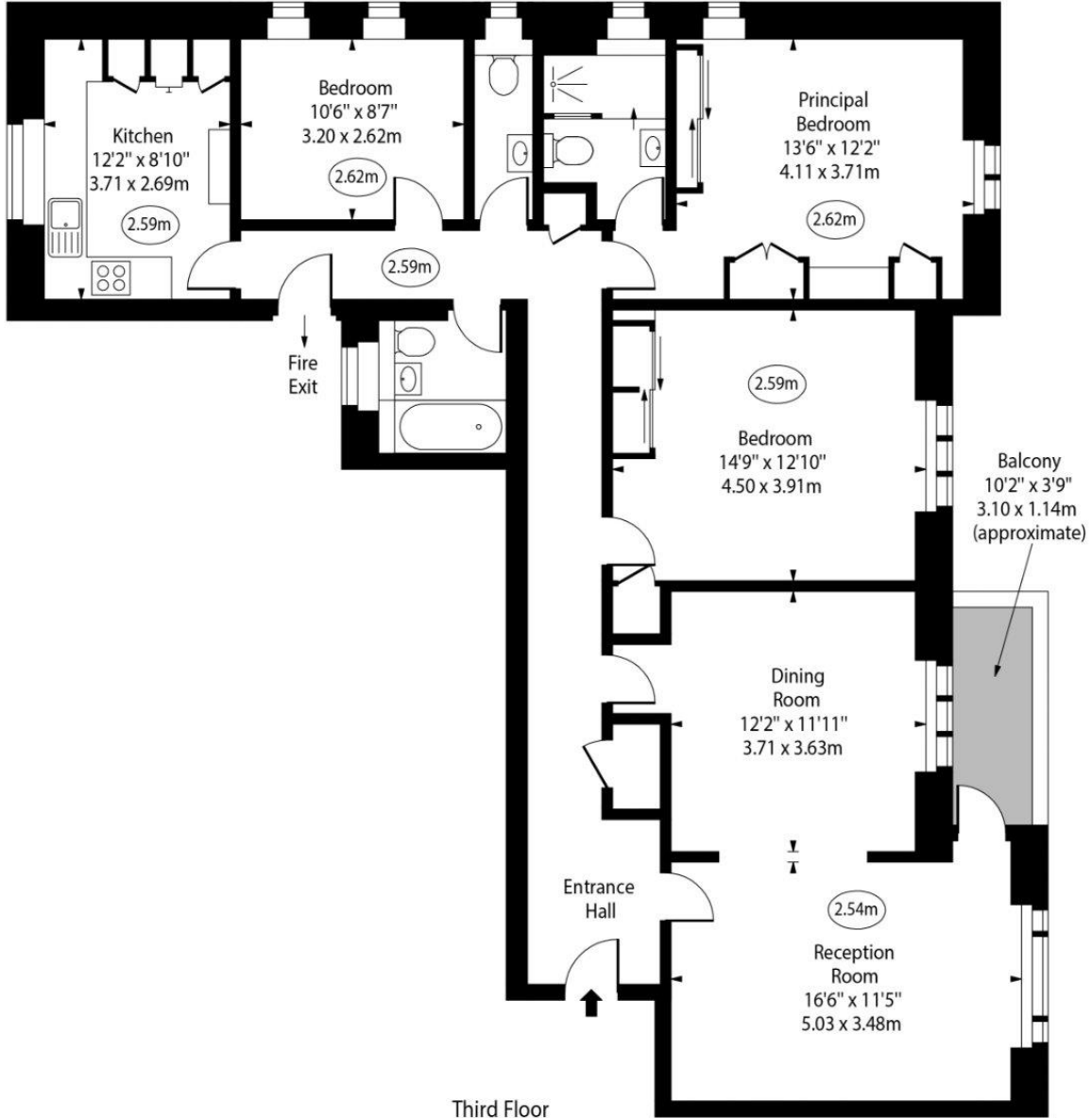
020 7794 3311

chestertons.co.uk

Heathway Court,
Finchley Road,
Hampstead, NW3



○ - Ceiling Height



Third Floor

Approx Gross Internal Area 1300 Sq Ft - 120.77 Sq M

For Illustration Purposes Only - Not To Scale
www.goldlens.co.uk
Prepared for Chestertons
Ref. No. 025493M

