



Netherhall Gardens

Hampstead, NW3

Asking Price £849,950

A recently refurbished two bedroom top floor apartment situated within this red brick semi-detached period house.

The property benefits from a 15'10 x 13'1 reception room with a feature fireplace, high quality fitted kitchen and built in wardrobes in both bedrooms.

The property is very well located on this premier address in Hampstead, just 0.2 miles from Finchley Road Underground (Jubilee Line) and 0.5 miles from Hampstead Village, offering a cosmopolitan mix of shops, cafes and restaurants as well as Hampstead Underground (Northern Line).

CHESTERTONS



Netherhall Gardens

Hampstead, NW3

- Two bedrooms
- One bathroom
- 851 square feet
- Premier road in Hampstead



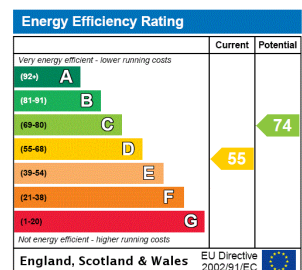
Tenure: Leasehold 124 years remaining.

Service Charge: £1,400 per year.

Ground Rent: £0

Local Authority: Camden

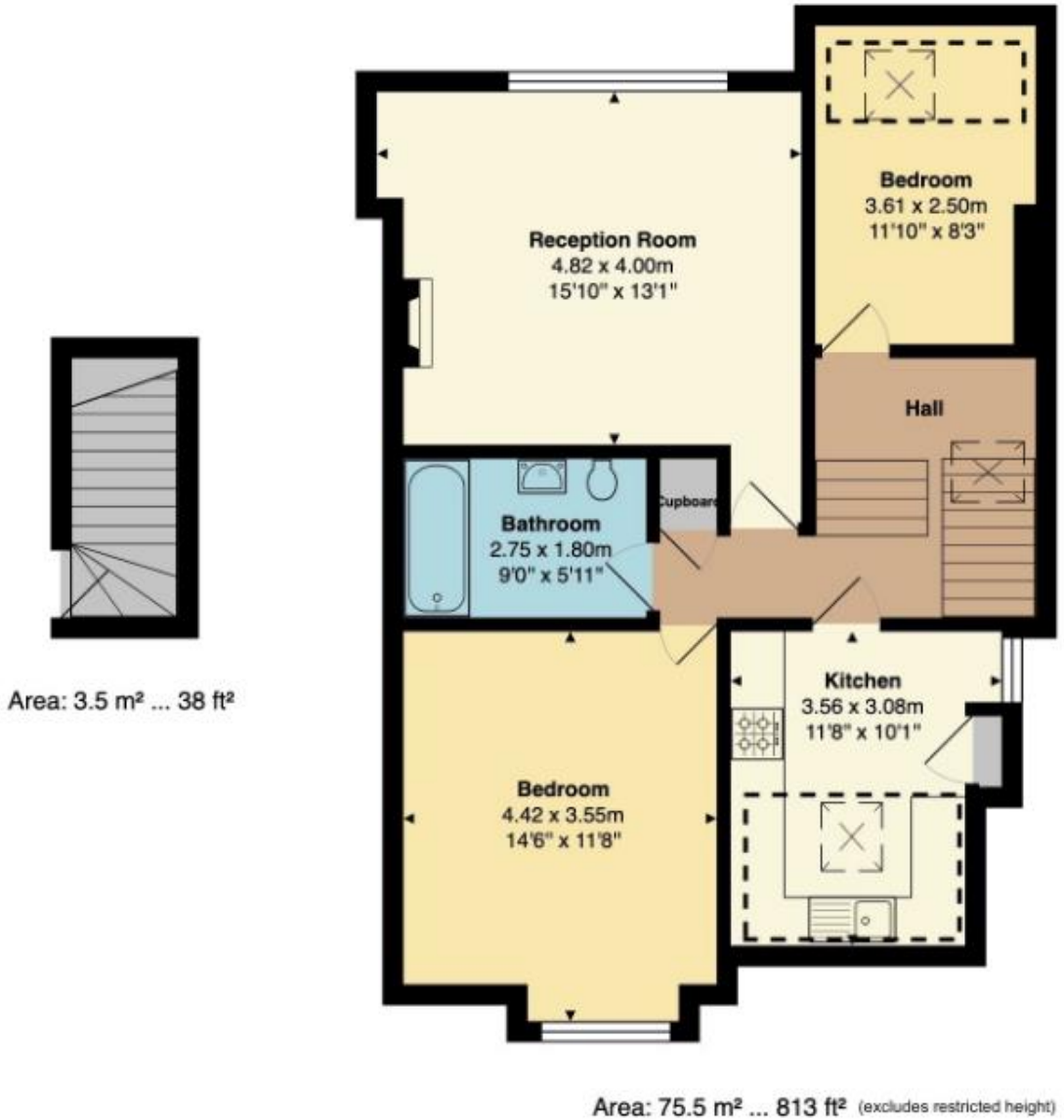
Council Tax Band: F



Chestertons Hampstead Sales

55-56 Hampstead High Street
 Hampstead
 NW3 1QH
 hampstead@chestertons.co.uk
 020 7794 3311
 chestertons.co.uk

Flat 4, 35 Netherall Gardens, London, NW3 5RL



Total Area: 79.0 m² ... 851 ft²

All measurements are approximate and for display purposes only

