



# Palace Court

Finchley Road, Hampstead NW3

Asking Price £1,500,000

A substantial four bedroom lateral apartment situated in this imposing mansion block with a lift, porter and several balconies situated in an excellent location close to the shops, restaurants and transport links of the Finchley Road, Hampstead and West Hampstead.



# Palace Court

Finchley Road, Hampstead NW3

- Substantial four bedroom lateral flat
- Fourth floor
- 23'7 x 19'9 reception
- Six balconies
- Share of freehold
- Close to transport links



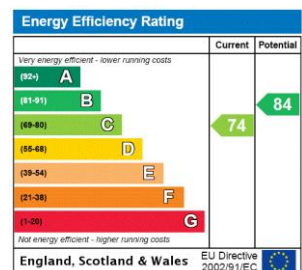
**Tenure:** Share of Freehold and a lease of 103 years remaining.

**Service Charge:** £8,300 per annum plus a £10,000 contribution to the sinking fund.

**Ground Rent:** £30

**Local Authority:** Camden

**Council Tax Band:** G



### *Chestertons Hampstead Sales*

55-56 Hampstead High Street

Hampstead

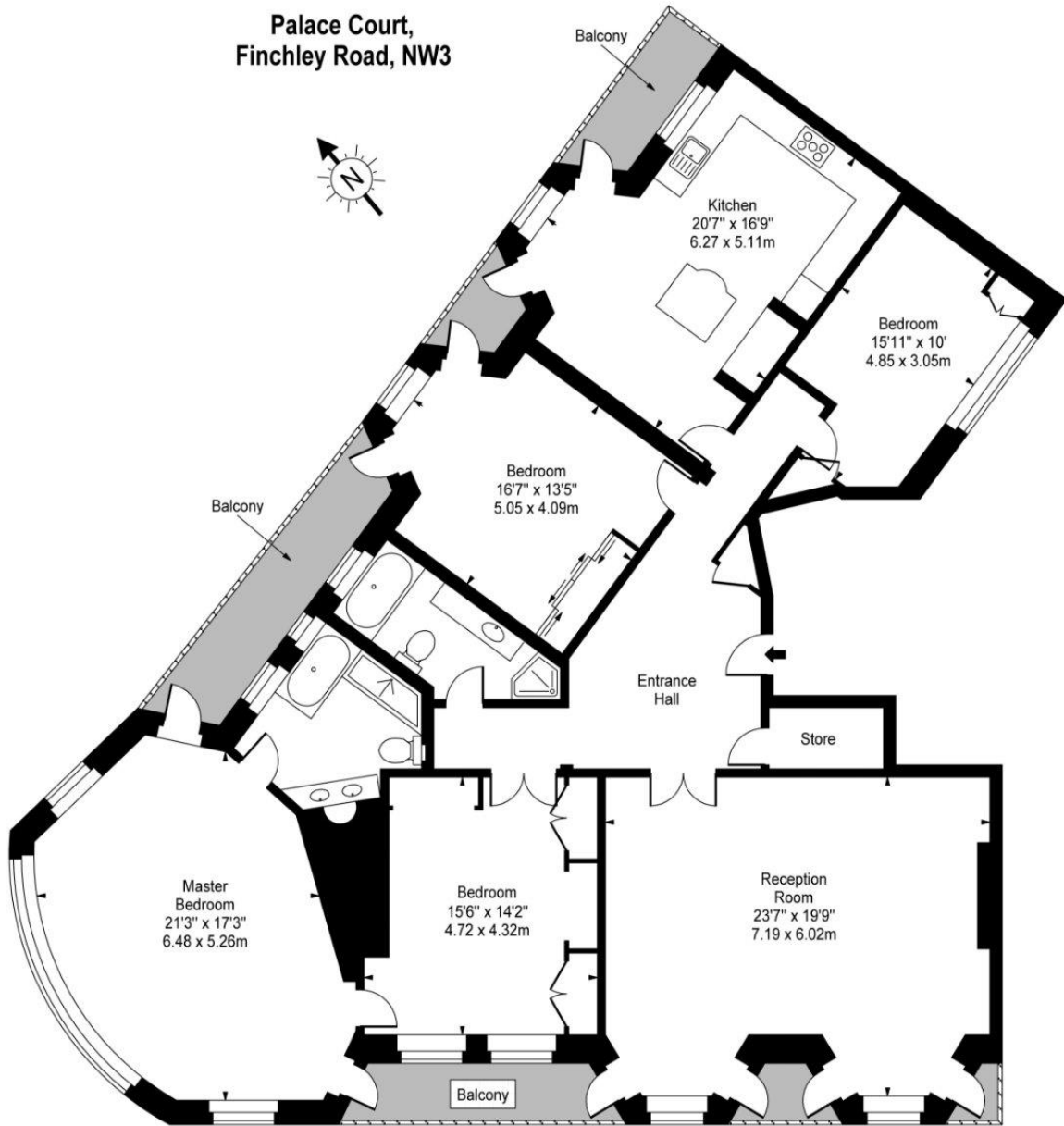
NW3 1QH

[hampstead@chestertons.co.uk](mailto:hampstead@chestertons.co.uk)

020 7794 3311

[chestertons.co.uk](http://chestertons.co.uk)

**Palace Court,  
Finchley Road, NW3**



Fourth Floor

**Approx Gross Internal Area 2103 Sq Ft - 195.37 Sq M**

For Illustration Purposes Only - Not To Scale

[www.goldlens.co.uk](http://www.goldlens.co.uk)

Prepared for Chestertons

Ref. No. 001879

