



## Belsize Road

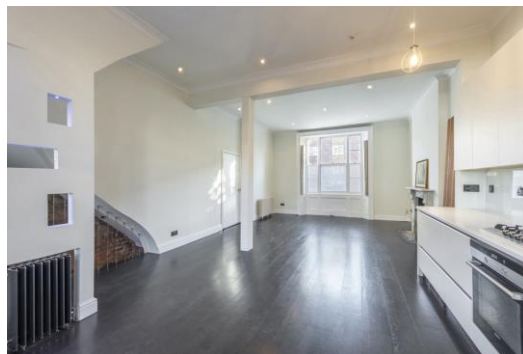
South Hampstead, NW6

Asking Price £850,000

A newly refurbished three bedroom, two bathroom apartment with a private garden, located in a popular location in South Hampstead.

Benefitting from over 10' high ceilings in a 27'4" x 15'3" open-plan living accommodation, modern décor with the bedrooms and bathrooms refurbished in 2023 and a share of freehold.

Located 0.2 miles from the parade of shops and sought after restaurants in South Hampstead. 0.2 miles from South Hampstead Overground and 0.4 miles from Swiss Cottage (Jubilee Line).



# Belsize Road

## South Hampstead, NW6

- Three bedrooms
- Two bathrooms and one W/C
- Private Garden
- Duplex apartment
- Share of freehold
- 0.2 miles from Overground
- 0.4 miles from Jubilee Line



**Tenure:** Share of Freehold with a lease of 96 years remaining.

**Service Charge:** £1,350pa including building insurance.

**Ground Rent:** £0

**Local Authority:** Camden

**Council Tax Band:** E

Energy Efficiency Rating		
	Current	Potential
Very energy efficient - lower running costs		
(92-100) <b>A</b>		
(81-91) <b>B</b>		
(69-80) <b>C</b>	71	80
(55-68) <b>D</b>		
(39-54) <b>E</b>		
(21-38) <b>F</b>		
(1-20) <b>G</b>		
Not energy efficient - higher running costs		
England, Scotland & Wales	EU Directive 2002/91/EC	

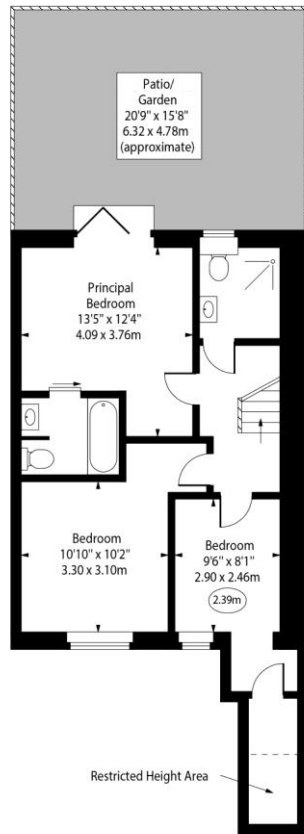
### *Chestertons Hampstead Sales*

55-56 Hampstead High Street  
 Hampstead  
 NW3 1QH  
 hampstead@chestertons.co.uk  
 020 7794 3311  
 chestertons.co.uk

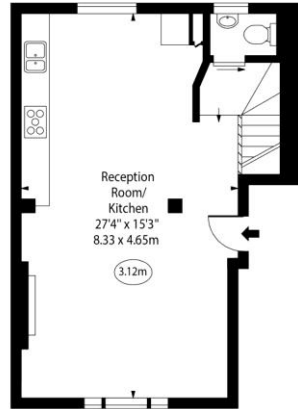
Belsize Road, NW6



○ - Ceiling Height



Lower Ground Floor



Ground Floor

Approx Gross Internal Area

1006 Sq Ft - 93.46 Sq M

Approx. Floor Area Including Restricted Heights

1024 Sq Ft - 95.13 Sq M

For Illustration Purposes Only - Not To Scale

www.goldlens.co.uk

Prepared for Chestertons

Ref. No. 022477E

