



# Belsize Square

Belsize Park, NW3

Asking Price £1,425,000

Situated on the upper floors of this beautiful stucco fronted semi-detached period house in Belsize Park, a bright three bedroom apartment comprising over 1,200 square feet of accommodation.

This well presented apartment benefits from a 24'10 x 17'5 reception room, two bathrooms, sash windows, sole access to the loft (not demised) a long lease and a share of the freehold. Sole agent.



# Belsize Square

Belsize Park, NW3

- Three bedrooms and two bathrooms.
- Bright apartment.
- Over 1,200 square feet.
- Share of freehold & a long lease.



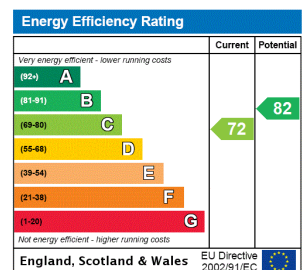
**Tenure:** Share of Freehold and a lease of 958 years remaining.

**Service Charge:** £0

**Ground Rent:** £0

**Local Authority:** Camden

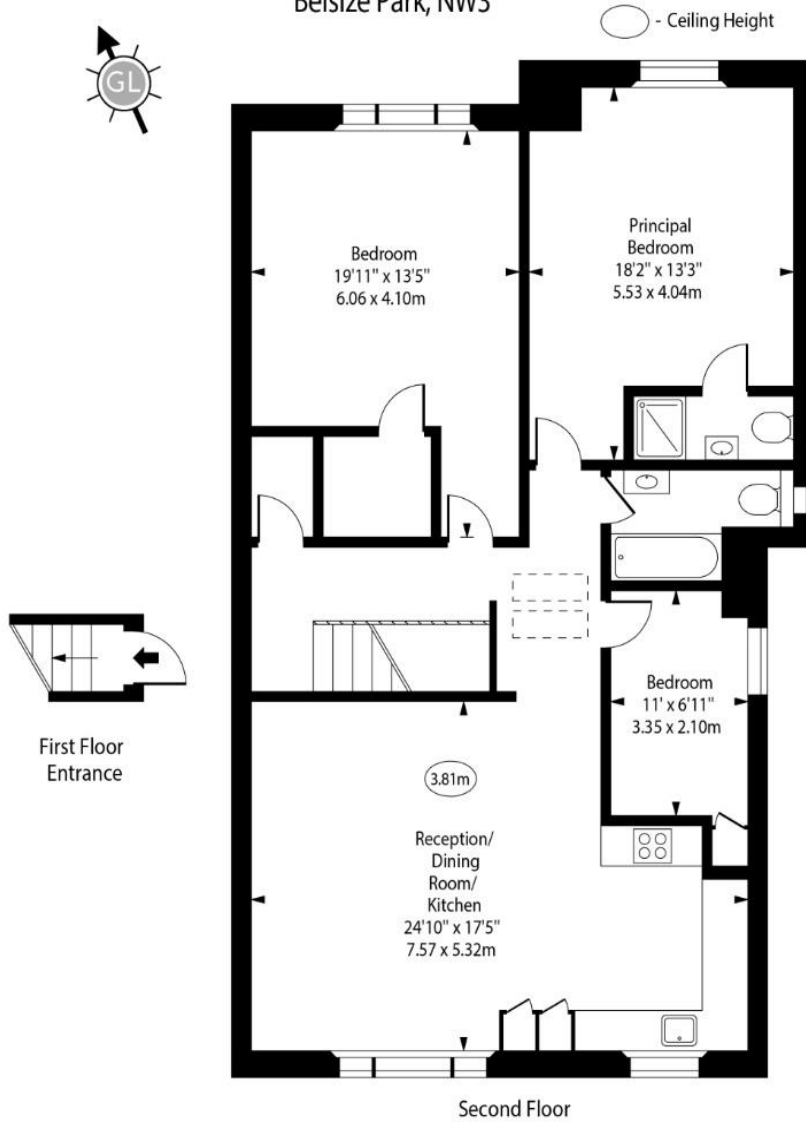
**Council Tax Band:** G



### *Chestertons Hampstead Sales*

55-56 Hampstead High Street  
 Hampstead  
 NW3 1QH  
 hampstead@chestertons.co.uk  
 020 7794 3311  
 chestertons.co.uk

Belsize Square,  
Belsize Park, NW3



Approx Gross Internal Area 1206 Sq Ft - 112.04 Sq M

For Illustration Purposes Only - Not To Scale

[www.goldlens.co.uk](http://www.goldlens.co.uk)

Prepared for Chestertons

Ref. No. 022557MS

