



Bay House

Kidderpore Avenue, Hampstead NW3 Asking Price £1,500,000

A stunning two double bedroom, two bathroom duplex apartment situated in a period building forming part of this exceptional and prestigious luxury development, Hampstead Manor.

The apartment further benefits from an allocated parking space and a long lease.

Hampstead Manor offers 24 hour concierge, communal landscaped gardens, gym, spa, and an indoor swimming pool.



Bay House

Kidderpore Avenue, Hampstead NW3

- Stunning duplex apartment
- 1,065 square feet/99 square metres
- Two double bedrooms with built in wardrobes
- Two bathrooms
- Engineered timber flooring
- Underfloor heating & comfort cooling
- Siemens appliances
- Composite kitchen work surfaces
- Communal swimming pool/spa
- Communal landscaped gardens
- Communal gym facilities
- 24 hour concierge service



Tenure: Leasehold 991 years 3 months remaining as of 2.7.2024

Service Charge: £11,000 per annum

Ground Rent: £100 per annum

Local Authority: Camden

Council Tax Band: G

Energy Efficiency Rating		Current	Potential
Very energy efficient - lower running costs			
(92-100)	A		
(81-91)	B	82	82
(69-80)	C		
(55-68)	D		
(39-54)	E		
(21-38)	F		
(1-20)	G		
Not energy efficient - higher running costs			
England, Scotland & Wales		EU Directive 2002/91/EC	

Chestertons Hampstead Sales

55-56 Hampstead High Street

Hampstead

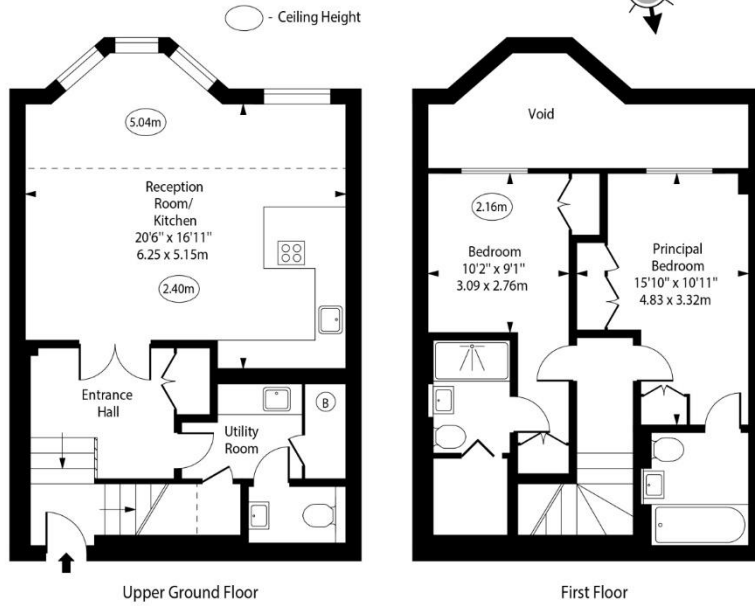
NW3 1QH

hampstead@chestertons.co.uk

020 7794 3311

chestertons.co.uk

Bay House,
Kidderpore Avenue, NW3



Upper Ground Floor

First Floor

Approx Gross Internal Area 1065 Sq Ft - 98.94 Sq M
(Excluding Void)

For Illustration Purposes Only - Not To Scale
www.goldlens.co.uk
Prepared for Chestertons
Ref. No. 024041J

