



# Savernake Road

Hampstead, NW3

Asking Price £1,050,000

A wonderfully bright three bedroom, two bathroom second and third floor duplex apartment with the huge benefit of direct access to a private decked roof terrace.

This lovely apartment boasts 20'3 x 14'8 reception room with wood floors and a contemporary open plan kitchen.

This beautiful apartment is located just half a mile from all the shops, cafes, restaurants and amenities of South End Green. Direct access to the open acres of Parliament Hill is located just 0.2 miles from the property. Sole agent.



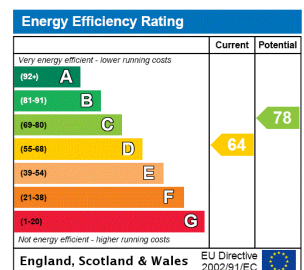
# Savernake Road

Hampstead, NW3

- Duplex apartment
- Three bedrooms
- Two bathrooms
- Large roof terrace
- Views over Parliament Hill
- 0.2 miles to Parliament Hill



**Tenure:** Leasehold 144 years 11 months remaining as of July 2024  
**Service Charge:** £3,057 per annum including building insurance.  
**Ground Rent:** £0  
**Local Authority:** Camden  
**Council Tax Band:** F



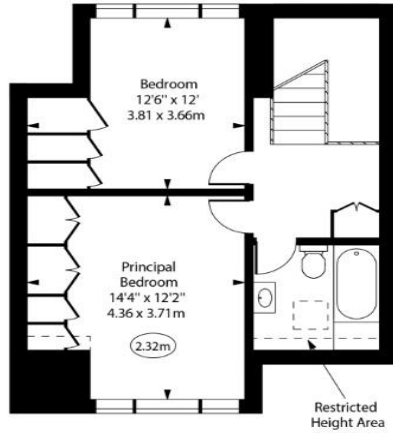
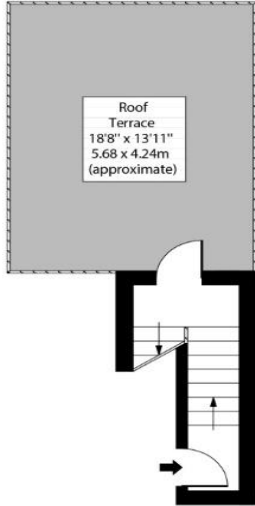
### Chestertons Hampstead Sales

55-56 Hampstead High Street  
 Hampstead  
 NW3 1QH  
 hampstead@chestertons.co.uk  
 020 7794 3311  
 chestertons.co.uk

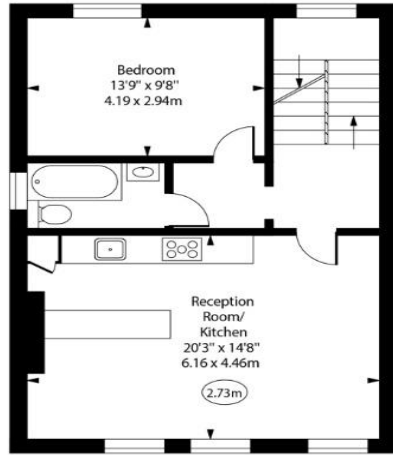
Savernake Road, NW3



○ - Ceiling Height



Third Floor



Second Floor

First Floor

Approx Gross Internal Area 1125 Sq Ft - 104.51 Sq M

Approx. Floor Area Including Restricted Heights 1135 Sq Ft - 105.44 Sq M

For Illustration Purposes Only - Not To Scale  
www.goldlens.co.uk  
Prepared for Chestertons  
Ref. No. 023449MS

