



Ellerdale Road

Hampstead Village, NW3

Asking Price £1,000,000

A striking and impressive two double bedroom top floor apartment boasting direct access to a large roof terrace offering panoramic views of London.

Ellerdale Road is one of Hampstead's premier turnings, ideally located off the top of Fitzjohn's Avenue next to Hampstead Village. The property is situated just 100 yards from the wide range of amenities, cafes and restaurants that Hampstead Village provides.



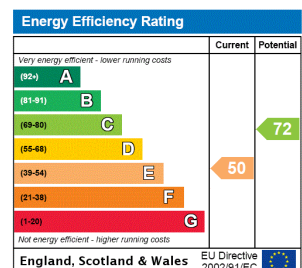
Ellerdale Road

Hampstead Village, NW3

- Top floor flat comprising 953 square feet
- Two double bedrooms
- Roof terrace with panoramic views
- 100 yards to shops
- 0.2 miles to the Northern Line



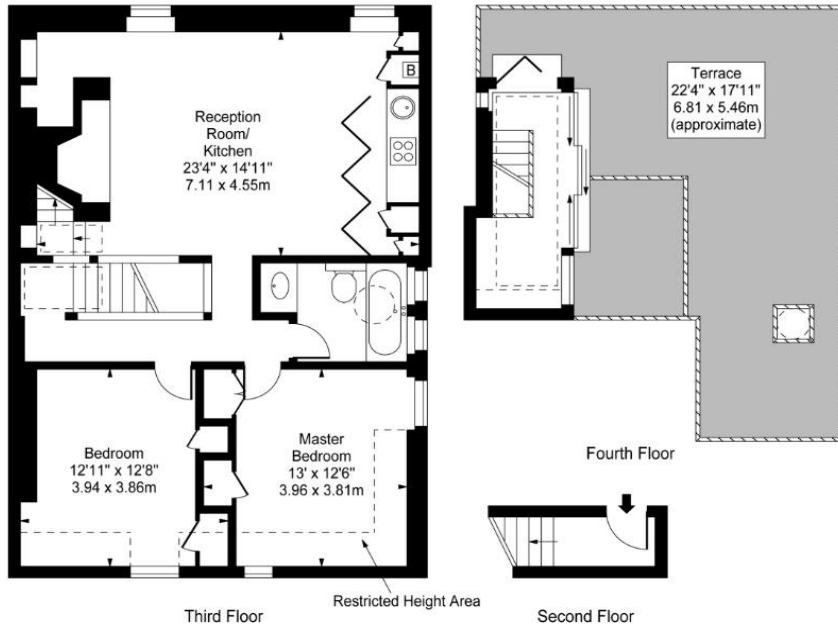
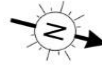
Tenure: Leasehold 139 years remaining
Service Charge: £2,913 per annum
Ground Rent: £0
Local Authority: Camden
Council Tax Band: F



Chestertons Hampstead Sales

55-56 Hampstead High Street
 Hampstead
 NW3 1QH
 hampstead@chestertons.co.uk
 020 7794 3311
 chestertons.co.uk

Ellerdale Road, NW3



Approx Gross Internal Area **953 Sq Ft - 88.53 Sq M**
(Including Restricted Height Area)

For Illustration Purposes Only - Not To Scale
www.goldlens.co.uk
Prepared for Chestertons
Ref. No. 003734J

