



Steeles Road

Belsize Park, NW3

Asking Price £775,000

A beautiful and well-proportioned two double bedroom flat situated on the second floor of a period house on Steeles Road, a highly desirable address in Belsize Park located close to local shops and cafes.

The apartment comprises a bright 16'3 x 10'9 reception room, fitted kitchen, contemporary shower room, principal bedroom with built in wardrobes and a spacious second bedroom. The property is extremely well presented and bright throughout, both bedrooms are situated at the rear of the property and have lovely views over gardens and period properties.

Belsize Park Underground (Northern Line) is located 0.4 miles from the property.

Sole agent.



Steeles Road

Belsize Park, NW3

- Second floor two double bedroom apartment.
- Built in wardrobes in the principal bedroom.
- Extremely bright throughout.
- Recently modernised shower room.
- Lovely rear aspect over gardens.
- Desirable address.
- 0.4 miles to the Belsize Park Underground.



Tenure: Leasehold 90 years 9 months remaining as of 15.5.24

Service Charge: £1,932 per annum

Ground Rent: £200 per annum

Local Authority: Camden

Council Tax Band: E

Energy Efficiency Rating		Current	Potential
Very energy efficient - lower running costs			
(92-100)	A		
(81-91)	B		
(69-80)	C	76	84
(55-68)	D		
(39-54)	E		
(21-38)	F		
(1-20)	G		
Not energy efficient - higher running costs			
England, Scotland & Wales		EU Directive 2002/91/EC	

Chestertons Hampstead Sales

55-56 Hampstead High Street

Hampstead

NW3 1QH

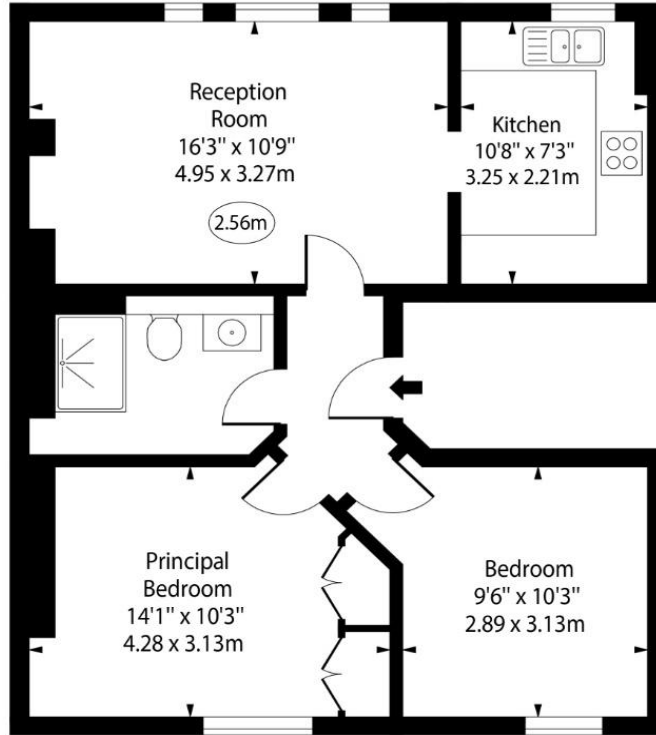
hampstead@chestertons.co.uk

020 7794 3311

chestertons.co.uk

Steeles Road, NW3

○ - Ceiling Height



Second Floor

Approx Gross Internal Area 610 Sq Ft - 56.67 Sq M

For Illustration Purposes Only - Not To Scale

www.goldlens.co.uk

Prepared for Chestertons

Ref. No. 023051J

