



Hampstead Hill Gardens

Hampstead, NW3

Asking Price £2,250,000

SOLD BY CHESTERTONS

A superlative four bedroom lateral apartment occupying over 1,500 square feet across the first floor of this splendid red brick detached house located on this premier turning in Hampstead.

This beautiful apartment is extremely bright throughout with large windows and high ceilings, the property has been immaculately maintained by the current owner of many years and is accessed via a large communal entrance hall and sweeping staircase, to the first floor.

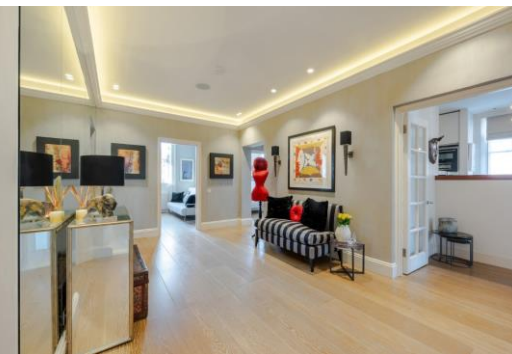
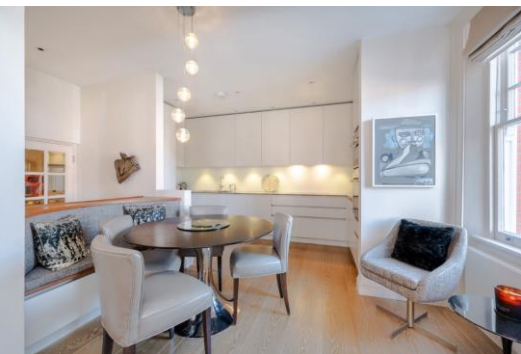
Upon entering the apartment you are met by an oversize entrance hall, to your right is the wonderful and bright entertaining space comprising of a reception room approximately 16' x 16' with two sets of double doors opening to Juliet balconies overlooking the delightful lawned communal garden. The beautifully appointed Roundhouse designed kitchen is complemented by a comfortable dining area.

The principal bedroom is approximately 11' x 11' and features built in wardrobes by Roundhouse and a luxurious en-suite shower room. The second bedroom is also of a very good size, 16' x 16', with excellent built in wardrobes also by Roundhouse.

The two further bedrooms both have built in study areas and built in storage and there is an additional full bathroom with separate bath and walk in shower.

Hampstead Hill Gardens is renowned as one of the most desirable addresses in Hampstead and is located just off Rosslyn Hill and 0.4 miles from Belsize park Underground (Northern Line). Sole agent.

CHESTERTONS



Hampstead Hill Gardens

Hampstead, NW3

- Superlative lateral apartment
- First floor of a detached period house
- Over 1,500 square feet
- Premier Hampstead address
- Four bedrooms with built in storage
- Roundhouse designed kitchen and wardrobes
- Oversize entrance hall
- Ample storage throughout
- Integrated ceiling speakers
- Communal garden
- Share of freehold



Tenure: Share of Freehold and a lease of 82 years 9 months remaining

Service Charge: £8,000 per annum

Ground Rent: £0

Local Authority: Camden

Council Tax Band: F

Chestertons Hampstead Sales

55-56 Hampstead High Street

Hampstead

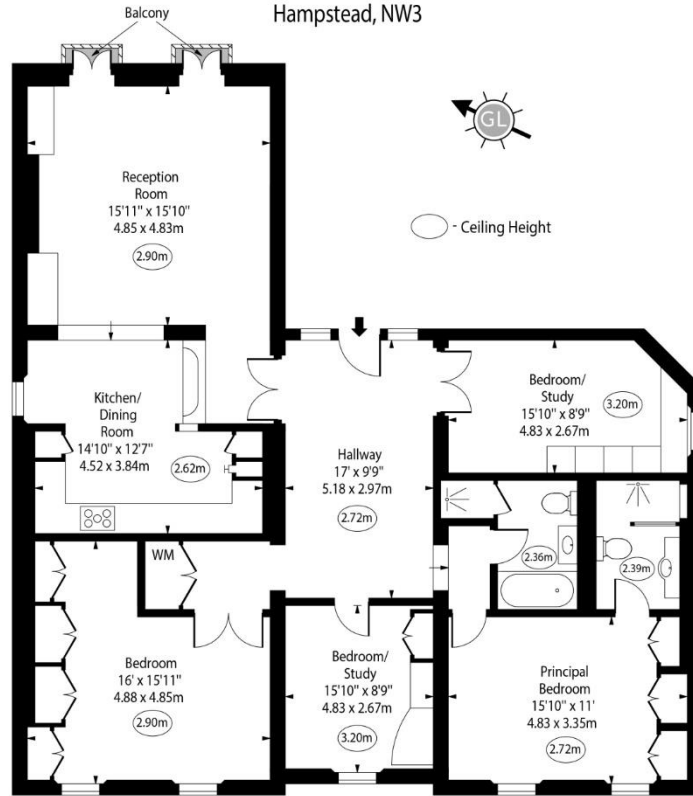
NW3 1QH

hampstead@chestertons.co.uk

020 7794 3311

chestertons.co.uk

Hampstead Hill Gardens,
Hampstead, NW3



First Floor

Approx Gross Internal Area 1514 Sq Ft - 140.65 Sq M

For Illustration Purposes Only - Not To Scale

www.goldlens.co.uk
Prepared for Chestertons
Ref. No. 022810M

