



Mill Lane

West Hampstead, NW6

Asking Price £720,000

A bright and airy four bedroom duplex apartment on the first and second floors of a period conversion.

The property boasts high ceilings on the first floor with a 22' x 19' south facing open plan reception room with wood flooring and a kitchen island. The principal bedroom measures 14'2 x 10'7 and benefits from a bay window and en-suite bathroom.

Located 0.4 miles from Kilburn Underground (Jubilee Line), 0.5 miles from Brondesbury Overground and 0.5 miles from West End Lane. Sole agent.



Mill Lane

West Hampstead, NW6

- Four bedrooms
- First and second floor duplex apartment
- South facing open-plan kitchen/reception
- 0.4 miles from Jubilee Line



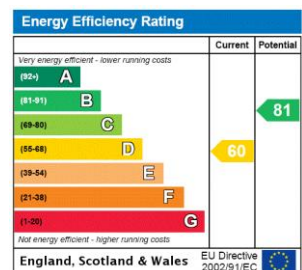
Tenure: Share of Freehold and a lease of 82 years remaining.

Service Charge: £0

Ground Rent: £0

Local Authority: Camden

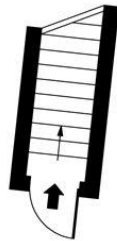
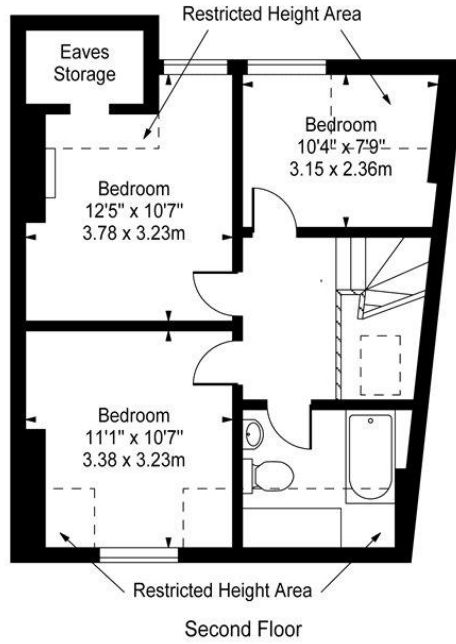
Council Tax Band: E



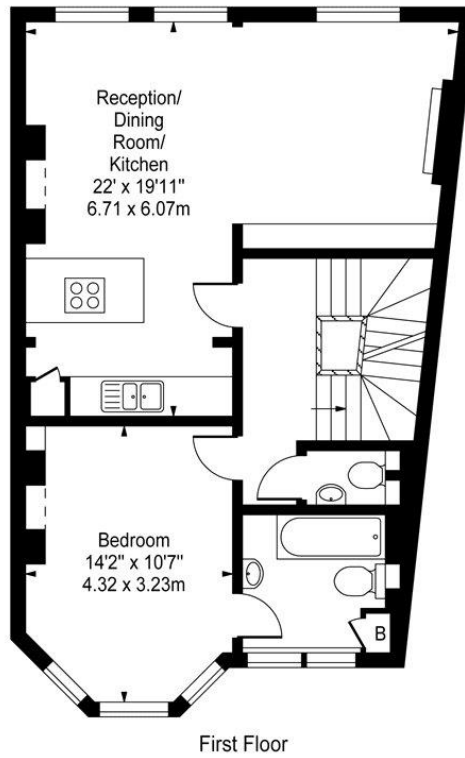
Chestertons Hampstead Sales

55-56 Hampstead High Street
Hampstead
NW3 1QH
hampstead@chestertons.co.uk
020 7794 3311
chestertons.co.uk

Mill Lane, NW6



Ground Floor
Entrance



Approx Gross Internal Area **1174 Sq Ft - 109.06 Sq M**
(Including Restricted Height Area & Eaves Storage)

For Illustration Purposes Only - Not To Scale
www.goldlens.co.uk
Prepared for Chestertons
Ref. No. 005300J

