



Hazlebury Road
Sands End, SW6

CHESTERTONS





A bright first floor period apartment arranged as an open plan kitchen/reception space, double bedroom with built in wardrobes and bathroom.

The property is located in the sought after 'Bury Triangle' area of Sands End just behind the amenities of Wandsworth Bridge Road.

Further amenities and transport links can be found almost equidistance at both Parsons Green and Imperial Wharf.

- Bright first floor period apartment
- Open plan kitchen/reception space
- Double bedroom, bathroom
- Located in the sought after Bury Triangle

Asking Price £465,000

Score	Energy rating	Current	Potential
92+	A		
81-91	B		
69-80	C	73 C	73 C
55-68	D		
39-54	E		
21-38	F		
1-20	G		

Tenure: Leasehold 116 years 1 months

Service Charge: £295 Building insurance only

Ground Rent: £300

Local Authority: Hammersmith & Fulham

Council Tax Band: C

Chestertons Fulham Road Sales

654 Fulham Road

Fulham

London

SW6 5RU

fulham@chestertons.co.uk

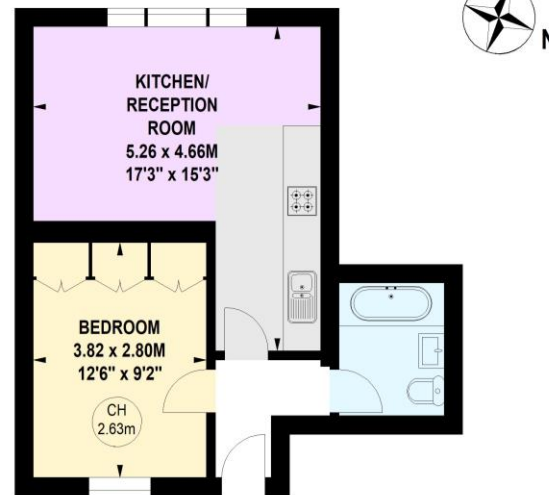
020 7384 9898

Hazlebury Road, SW6

Approximate gross internal area

37.90 sq m / 408 sq ft

Key :
CH - Ceiling Height



First Floor

The floor plan is not to scale and measurements and areas shown are approximate and therefore should be used for illustrative purposes only.
The plan has been prepared in accordance with the RICS code of Measuring Practice and whilst we have confidence in the information produced, it must not be relied on.
If there is any aspect of particular importance, you should carry out or commission your own inspection of the property.

