



St Maur Road  
Parsons Green, SW6

CHESTERTONS





A well-presented, large family home on this desired tree-lined residential street, walking distance to Parsons Green.

Extending to just shy of 2,200 square feet, the property boasts a large double reception, leading to a modern kitchen/dining area on the ground floor. The kitchen provides direct access to a good size west facing garden, laid to patio, ideal for al fresco dining and entertaining during the summer months. A downstairs w/c lies adjacent to the downstairs hallway.

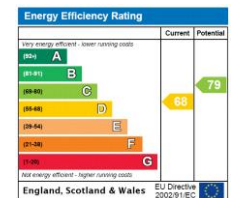
The first floor boasts two double bedrooms, one of which is the east facing master suite, complimented by a dressing area and a large en-suite bathroom, with a separate bathroom suite serving bedroom number two.

Two further double bedrooms occupy the second floor, one of which benefits from a nice size west facing terrace, ideal for a morning coffee or reading in the sun. Both double rooms are served with the added benefit of a shared three-piece bathroom suite adjacent.

St. Maur Road is a quiet residential road and is arguably the most sought after road in the Parsons Green 'stretch' of Fulham Road. Its location offers momentary access to the many amenities of Fulham Road and the wider Parsons Green area including Parsons Green underground station (District Line) located less than five minutes from the property.

- Period family home
- Large double length reception, kitchen/dining area
- Four bedrooms, three bathrooms
- 20ft West facing garden

Guide Price £2,000,000



**Tenure:** Freehold  
**Local Authority:** Hammersmith & Fulham  
**Council Tax Band:** G

**Chestertons Fulham Road Sales**

654 Fulham Road  
 Fulham  
 London  
 SW6 5RU

[fulham@chestertons.co.uk](mailto:fulham@chestertons.co.uk)

020 7384 9898

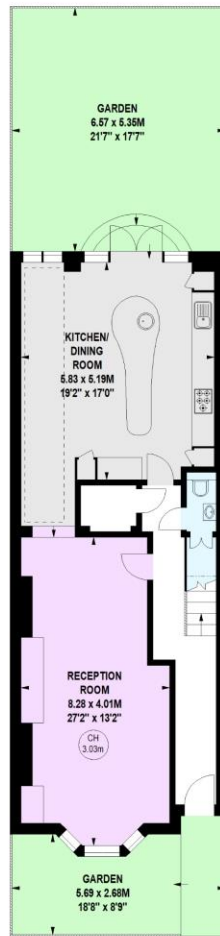
[chestertons.co.uk](http://chestertons.co.uk)

**St. Maur Road, SW6**

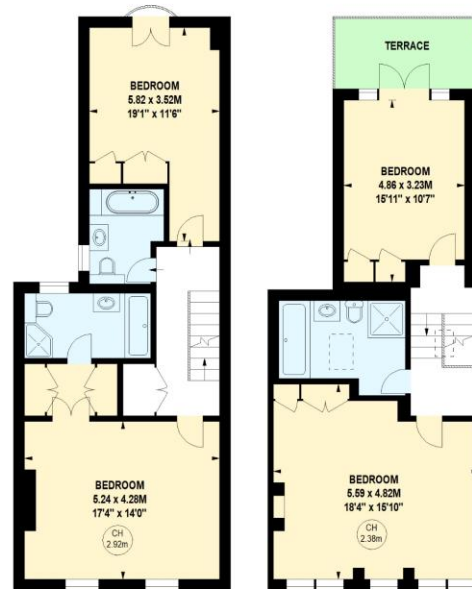
Approximate gross internal area  
203.08 sq m / 2186 sq ft



Key :  
CH - Ceiling Height



**Ground Floor**



**First Floor**

**Second Floor**

The floor plan is not to scale and measurements and areas shown are approximate and therefore should be used for illustrative purposes only. The plan has been prepared in accordance with the RICS code of Measuring Practice and whilst we have confidence in the information produced, it must not be relied on. If there is any aspect of particular importance, you should carry out or commission your own inspection of the property.

Chesterton Global Ltd trading as Chestertons for themselves and for the vendor of this property whose agents they are, give notice that (i) these particulars do not constitute any part of an offer or contract, (ii) all statements contained within these particulars are made without responsibility on the part of Chestertons or the vendor, (iii) whilst made in good faith, none of the statements contained within these particulars are to be relied upon as a statement or representation of fact, (iv) any intending purchasers must satisfy themselves by inspection or otherwise as to the correctness of each of the statements contained within these particulars, (v) the vendor does not make or give either Chestertons or any person in their employment any authority to make or give representation or warranty whatsoever in relation to this property. Wide angle lenses may be used. ©Copyright Chestertons | Chesterton Global Ltd | Registered Office 40 Connaught Street, Hyde Park, London W2 2AB Registered Company Number 05334580.



This paper is  
100% recyclable