



Lysia Street
Fulham, SW6

CHESTERTONS





A well positioned period home, to the north end of the Alphabet Streets extending to circa 1700 square feet of living across three floors.

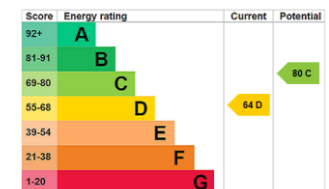
The accommodation consists of a nice entrance porch, followed by a large south facing reception moving into a good size kitchen/dining area on the ground floor.

Upstairs, the property boasts four bedrooms and two bathrooms across the first and second floors, with the top bedroom benefitting from the practical addition of an ensuite shower room.

Lysia Street forms part of the locally known 'Alphabet' streets in west Fulham. This area is particularly sought after given the large proportion of grand Victorian houses and proximity to Bishops Park and the River Thames. In general it is a particularly lovely and quiet location ideally situated for the amenities of Fulham Palace Road.

- Well positioned period home
- Large south facing reception
- Open kitchen/dining area
- Four bedrooms, two bathrooms

Asking Price £1,375,000



Tenure: Freehold

Local Authority: Hammersmith & Fulham

Council Tax Band: F

Chestertons Fulham Road Sales

654 Fulham Road

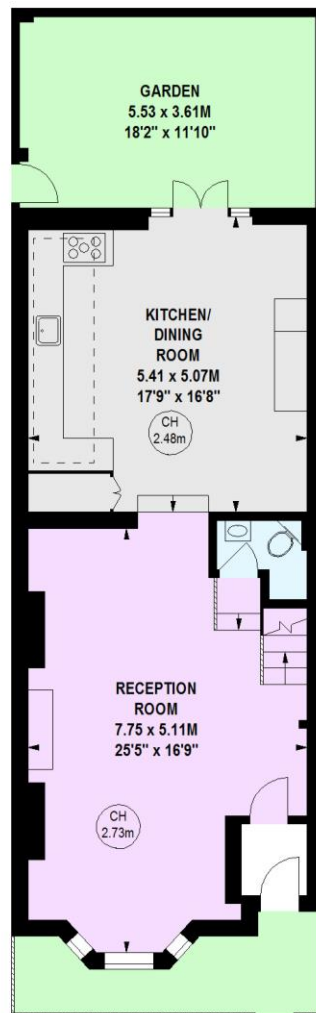
Fulham

London

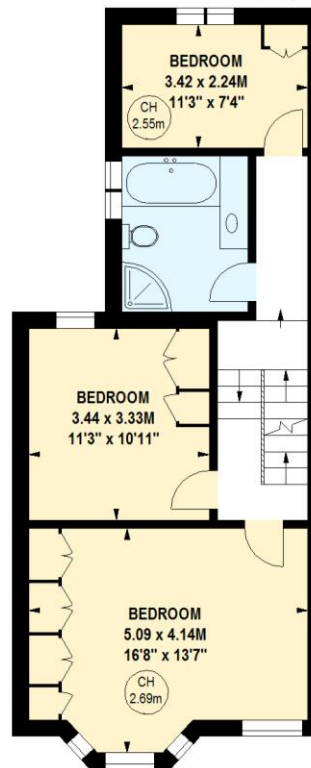
SW6 5RU

fulham@chestertons.co.uk

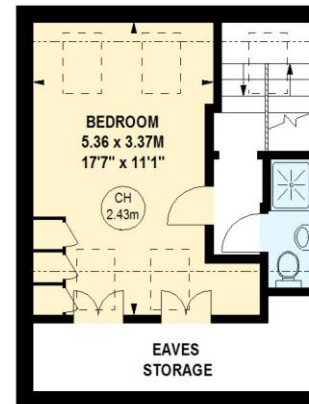
020 7384 9898



703 sq ft
Ground Floor



607 sq ft
First Floor



289 sq ft
Second Floor

Lysia Street, SW6

Approximate gross internal area

156.16 sq m / 1681sq ft
(Including Eaves Storage)

Eaves Storage
7.62 sq m / 82 sq ft



Key :
CH - Ceiling Height

This floor plan is a representation for guidance purposes only, not for valuation.
Any figure is approximate and must not be relied on as a statement of fact.
Copyright of Wyatt Dixon Homes

**WYATT DIXON
HOMES**

Chesterton UK Services Limited trading as Chestertons for themselves and for the vendor of this property whose agents they are, give notice that (i) these particulars do not constitute any part of an offer or contract, (ii) all statements contained within these particulars are made without responsibility on the part of Chestertons or the vendor, (iii) whilst made in good faith, none of the statements contained within these particulars are to be relied upon as a statement or representation of fact, (iv) any intending purchasers must satisfy themselves by inspection or otherwise as to the correctness of each of the statements contained within these particulars, (v) the vendor does not make or give either Chestertons or any person in their employment any authority to make or give representation or warranty whatsoever in relation to this property. Wide angle lenses may be used. ©Copyright Chestertons | Chesterton UK Services Limited | Registered Office 40 Connaught Street, Hyde Park, London W2 2AB Registered Company Number 05334580.



This paper is
100% recyclable