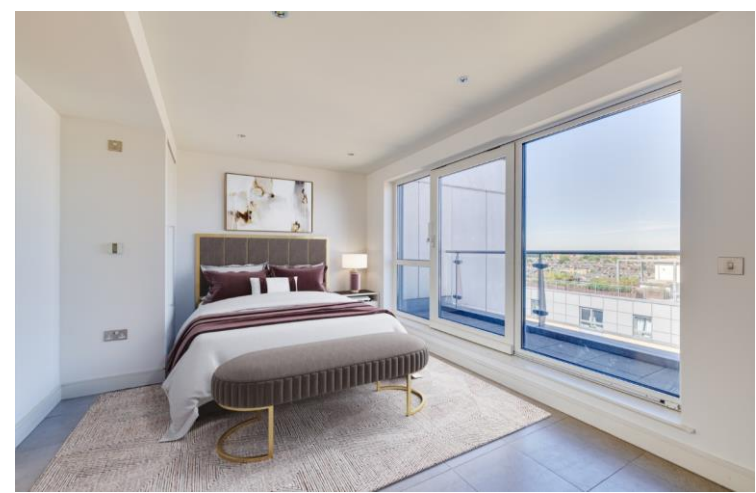




Monarch Point  
Imperial Wharf, SW6

CHESTERTONS









A seventh floor Penthouse apartment arranged as a grand atrium style reception room with River facing roof terrace, leading to a 26ft dining space with doors to a separate kitchen area, together with three double bedrooms and three bathrooms. The apartment benefits from built in wardrobes throughout, secure direct lift access and underground parking.

Imperial Wharf lies on the banks of the River Thames on the border of Fulham and Chelsea and comprises of residential flats and a number of shops and high end restaurants. Further on site amenities include a concierge service, extensive communal gardens and a riverside walk forming part of the Thames Path.

Transport links are excellent with Imperial Wharf over ground station only a short stroll away which gives access to Clapham Junction (1 stop) and West Brompton (District Line - 1 stop).

- Seventh floor Penthouse apartment
- Reception room, roof terrace, dining space, kitchen
- Three double bedrooms, three bathrooms
- Secure direct lift access, underground parking

Asking Price £2,595,000

Energy Efficiency Rating		Current	Potential
92-100	A		
81-91	B		
69-80	C	72	72
55-68	D		
49-54	E		
41-48	F		
31-39	G		
1-30			

Not energy efficient - higher running costs

EU Directive 2002/91/EC

England, Scotland & Wales

**Tenure:** Leasehold 974 years 3 months  
**Service Charge:** £11,644 pa  
**Ground Rent:** £425 pa  
**Local Authority:** Hammersmith & Fulham  
**Council Tax Band:** H

*Chestertons Fulham Road Sales*

654 Fulham Road  
 Fulham  
 London  
 SW6 5RU

fulham@chestertons.co.uk  
 020 7384 9898

**Monarch Point, SW6**  
Approximate Gross Internal Area : 282.42 Sq. metres  
3040 Sq. feet

Key :  
CH - Ceiling Height



Not to scale, for guidance only and must not be relied upon as a statement of fact.  
All measurements and areas are approximate only

Chesterton UK Services Limited trading as Chestertons for themselves and for the vendor of this property whose agents they are, give notice that (i) these particulars do not constitute any part of an offer or contract, (ii) all statements contained within these particulars are made without responsibility on the part of Chestertons or the vendor, (iii) whilst made in good faith, none of the statements contained within these particulars are to be relied upon as a statement or representation of fact, (iv) any intending purchasers must satisfy themselves by inspection or otherwise as to the correctness of each of the statements contained within these particulars, (v) the vendor does not make or give either Chestertons or any person in their employment any authority to make or give representation or warranty whatsoever in relation to this property. Wide angle lenses may be used. ©Copyright Chestertons | Chesterton UK Services Limited | Registered Office 40 Connaught Street, Hyde Park, London W2 2AB Registered Company Number 05334580.

