



Quain Mansions
Queen's Club Gardens, W14

CHESTERTONS





A superb & bright first floor apartment, benefitting from an attractive location, just moments' walk away from the world famous Queens Club.

The apartment resides within a well maintained mansion block & extends to over 600 square feet of lateral accommodation. Boasting two good size double bedrooms, a good size reception with a separate kitchen, the apartment would suit first-time buying couples and young families superbly, with Parsons Green & its' boutique shops and cafes also a short walk from your front door.

The property also benefits from access to a magnificent & well maintained communal, enclosed central garden. This is ideal for families to enjoy picnics, exercise their dogs & play sports together during the summer months.

Queens Club Gardens is a very popular complex of Mansion blocks surrounding manicured communal gardens and tennis courts for residents-only use. These properties are renowned for being extremely well managed and all communal and exterior areas are well maintained. Barons Court underground station is within a short stroll along with a parade of shops including an award-winning butcher and artisan coffee shop. The avid shopper can find Westfield just to the north and easy access to central London and Heathrow airport from the A4/M4.

- First floor apartment within desired mansion block
- Two bedrooms, one bathroom
- Good size reception, separate kitchen
- Large communal garden to front

Asking Price £575,000

Energy Efficiency Rating		
Energy efficient - lower running costs	Current	Potential
92-100 A		
81-91 B		
69-80 C	72	82
55-68 D		
49-54 E		
41-48 F		
31-39 G		
Not energy efficient - higher running costs		
EU Directive 2002/91/EC		

Tenure: Share of Freehold 999 years lease
Service Charge: £4000 P/A
Ground Rent: £100 P/A
Local Authority: Hammersmith & Fulham
Council Tax Band: E

Chestertons Fulham Road Sales

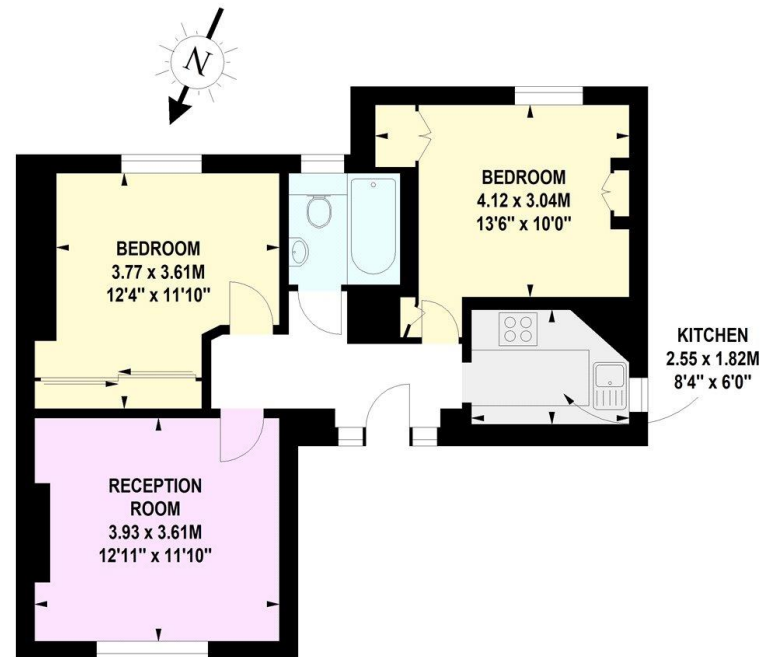
654 Fulham Road
 Fulham
 London
 SW6 5RU

fulham@chestertons.co.uk
 020 7384 9898

Quain Mansions, W14

Approximate gross internal area

56.95 sq m / 613 sq ft



First Floor

The floor plan is not to scale and measurements and areas shown are approximate and therefore should be used for illustrative purposes only.

The plan been prepared in accordance with the RICS code of Measuring Practice and whilst we have confidence in the information produced, it must be not be relied on.

If there is any aspect of particular importance, you should carry out or commission your own inspection of the property.

Copyright of FeaturePRO.

