



North End House
Fitzjames Avenue, W14





A very bright triple aspect apartment, situated on the first floor of this sought-after red brick mansion building, arranged as a double reception room, separate kitchen, three bedrooms and two bathrooms.

Fitzjames Avenue is a quiet tree-lined street conveniently located close to a wide selection of local shops and restaurants, as well as the many facilities of Kensington High Street and Hammersmith Broadway.

- First floor, triple aspect apartment
- Double reception room, separate kitchen
- Three bedrooms, two bathrooms
- Gated development, gardens, off-street parking

Asking Price £1,400,000

Energy Efficiency Rating		Current	Potential
90-100	A		80
81-89	B		
72-80	C	67	
63-71	D		
54-62	E		
45-53	F		
35-44	G		

Not energy efficient - higher running costs

EU Directive 2002/91/EC

England, Scotland & Wales

Tenure: Leasehold 951 years 10 months
Service Charge: £8707 pa
Ground Rent: £50 pa
Local Authority: Hammersmith & Fulham
Council Tax Band: F

Chestertons Fulham Road Sales

654 Fulham Road
Fulham
London
SW6 5RU

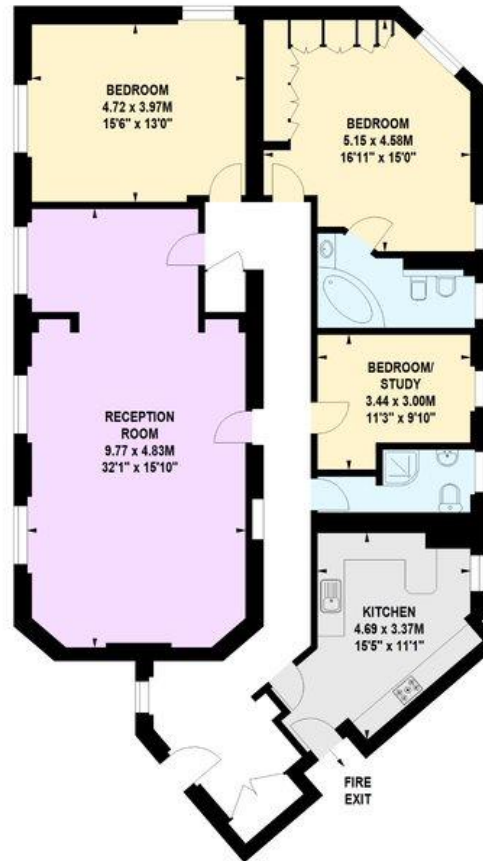
fulham@chestertons.co.uk
020 7384 9898

North End House, W14

Approximate gross internal area

151.43 sq m / 1630 sq ft

Key:
CH - Ceiling Height



First Floor

The floor plan is not to scale and measurements and areas shown are approximate and therefore should be used for illustrative purposes only. The plan has been prepared in accordance with the RICS code of Measuring Practice and whilst we have confidence in the information produced, it must not be relied on. If there is any aspect of particular importance, you should carry out or commission your own inspection of the property.

Chesterton Global Ltd trading as Chestertons for themselves and for the vendor of this property whose agents they are, give notice that (i) these particulars do not constitute any part of an offer or contract, (ii) all statements contained within these particulars are made without responsibility on the part of Chestertons or the vendor, (iii) whilst made in good faith, none of the statements contained within these particulars are to be relied upon as a statement or representation of fact, (iv) any intending purchasers must satisfy themselves by inspection or otherwise as to the correctness of each of the statements contained within these particulars, (v) the vendor does not make or give either Chestertons or any person in their employment any authority to make or give representation or warranty whatsoever in relation to this property. Wide angle lenses may be used. ©Copyright Chestertons | Chesterton Global Ltd | Registered Office 40 Connaught Street, Hyde Park, London W2 2AB Registered Company Number 05334580.



This paper is
100% recyclable