



The Courtyard
Gowan Avenue, SW6

CHESTERTONS





Sitting within this private & gated Mews development, the property boasts just under 800 square feet of accommodation spread across two floors.

The ground floor consists of a large & open plan, kitchen, living and dining area, with integrated appliances within the kitchen. Upstairs there is a large double bedroom with fitted wardrobes, accompanied by an adjacent four-piece bathroom suite, including a separate bath & shower.

The property enjoys a tranquil & private environment, with secure gated access from Gowan Avenue & private parking available in front of the home. A small service charge is payable per annum for the maintenance of the security systems & communal areas within the Courtyard.

The Courtyard resides on Gowan Avenue, an extremely desirable residential road running between the sought-after hubs of "Munster Village", Fulham Road and Parsons Green with their wealth of independent boutique shops, bars, and eclectic restaurants. Bishops Park is within a 5-minute walk which is great for families, running and a walk along the Thames Path to Hammersmith and beyond.

The house is in a great location for getting into Central London and the West End, as well as easy access out to the West and countryside. Both Parsons Green and Fulham Broadway underground stations (District Lines) are a short walk, plus extensive bus services locally. Additionally, Heathrow, the M4 and M3 are within easy reach.

- Well presented, freehold Mews
- Open plan reception, dining & kitchen
- One double bedroom, one bathroom
- Secure development, off-street parking

Guide Price £795,000

Energy Efficiency Rating		Current	Potential
100-105	A		
81-100	B		
62-80	C		75
43-61	D		
25-42	E	46	
10-24	F		
1-9	G		

Not energy efficient - higher running costs

England, Scotland & Wales EU Directive 2002/91/EC

Tenure: Freehold

Service Charge: Adhoc (Payable for up-keep of the Gate system & communal areas).

Local Authority: Hammersmith & Fulham

Council Tax Band: G

Chestertons Fulham Road Sales

654 Fulham Road

Fulham

London

SW6 5RU

fulham@chestertons.co.uk

020 7384 9898

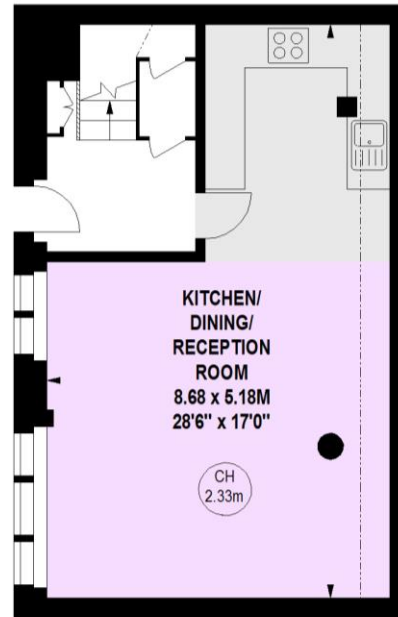
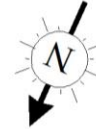
The Courtyard, SW6

Approximate gross internal area

72.28 sq m / 778 sq ft



Key :
CH - Ceiling Height



484 sq ft
Ground Floor



294 sq ft
First Floor

This floor plan is a representation for guidance purposes only, not for valuation.
Any figure is approximate and must not be relied on as a statement of fact.
Copyright of Wyatt Dixon Homes



Chesterton Global Ltd trading as Chestertons for themselves and for the vendor of this property whose agents they are, give notice that (i) these particulars do not constitute any part of an offer or contract, (ii) all statements contained within these particulars are made without responsibility on the part of Chestertons or the vendor, (iii) whilst made in good faith, none of the statements contained within these particulars are to be relied upon as a statement or representation of fact, (iv) any intending purchasers must satisfy themselves by inspection or otherwise as to the correctness of each of the statements contained within these particulars, (v) the vendor does not make or give either Chestertons or any person in their employment any authority to make or give representation or warranty whatsoever in relation to this property. Wide angle lenses may be used. ©Copyright Chestertons | Chesterton Global Ltd | Registered Office 40 Connaught Street, Hyde Park, London W2 2AB Registered Company Number 05334580.



This paper is
100% recyclable