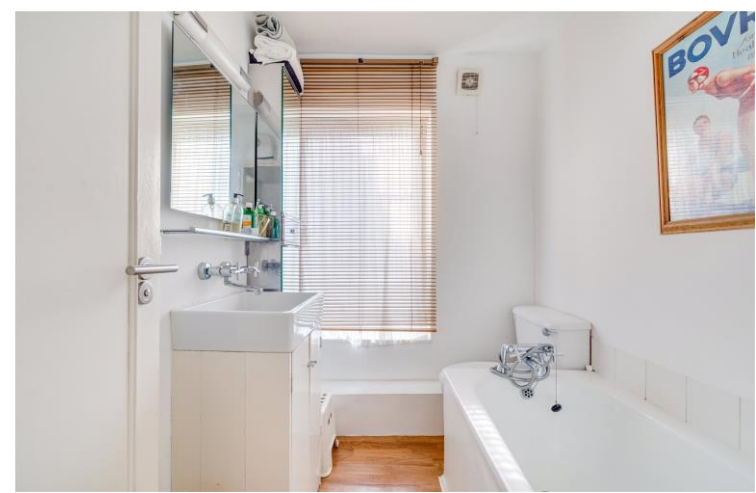




North End Road
London, W14

CHESTERTONS





Offered for sale with no onward chain, this property presents a superb investment or first-time buying opportunity within touching distance of Fulham Broadway, Parsons Green, Eel Brook Common. Normand Park and amenities on North End Road.

The property lies within the centre of North End Road, above a commercial space and extends to just under 650 square feet. The home boasts two double bedrooms, a good size reception, two bathrooms and an open kitchen/diner, meaning it could easily be used as an investment to rent to two sharers where appropriate.

The property is situated at the central point of North End Road, moments away from the amenities of Fulham Broadway, both of which offer many shops, bars and restaurants. Transport links are excellent with Fulham Broadway tube (District Line Zone 2) and bus links in abundance. Parks and green spaces are also nearby at Eel Brook Common, Normand Park and Parsons Green.

- Superb investment opportunity
- Good size reception room
- Open kitchen/dining area
- Two bedrooms, two bathrooms

Guide Price £399,500

Energy Efficiency Rating		
Energy efficient - lower running costs	Current	Potential
92-100 A		
81-91 B		
69-80 C		73
55-68 D		
49-54 E	40	
35-48 F		
21-34 G		
Not energy efficient - higher running costs		
EU Directive 2002/91/EC		
England, Scotland & Wales		

Tenure: Leasehold – 102 Years Unexpired
Service Charge: £2352.00 PA Approx.
Ground Rent: £50 PA Approx.
Local Authority: Hammersmith & Fulham
Council Tax Band: D

Chestertons Fulham Road Sales

654 Fulham Road
 Fulham
 London
 SW6 5RU

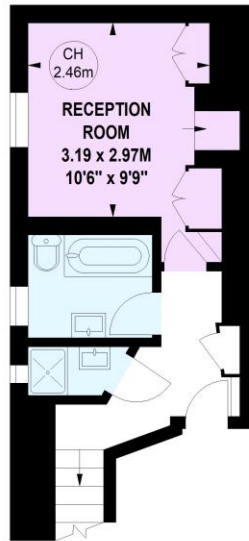
fulham@chestertons.co.uk
 020 7384 9898

North End Road, W14

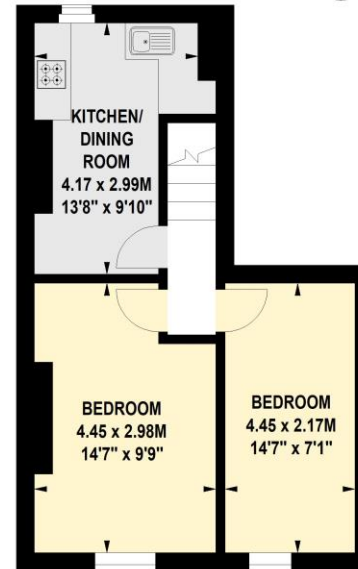
Approximate gross internal area

59.36 sq m / 639 sq ft

Key :
CH - Ceiling Height



First Floor



Second Floor

The floor plan is not to scale and measurements and areas shown are approximate and therefore should be used for illustrative purposes only. The plan has been prepared in accordance with the RICS code of Measuring Practice and whilst we have confidence in the information produced, it must not be relied on. If there is any aspect of particular importance, you should carry out or commission your own inspection of the property.

