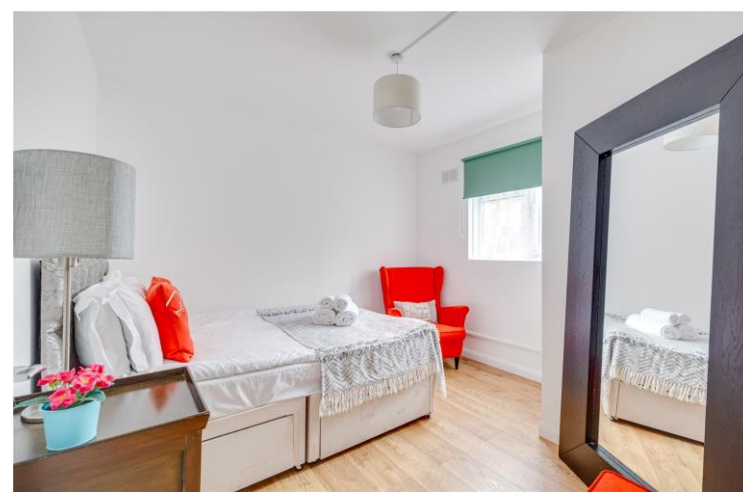




Romily Court
Landridge Road, SW6





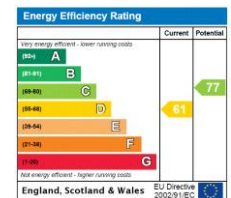
A newly refurbished ground floor, one double bedroom apartment, currently presented in superb order throughout.

The apartment consists of entrance hall with access to all principle rooms, double bedroom with single double glazed aspect to side, three-piece modern bathroom suite, with shower over bath and finally a large and modern kitchen, dining and reception area, overlooking the communal garden to the rear. The property benefits from being sold with no onward chain and comes with a resident's parking space.

Romily Court is conveniently located for access to Parsons Green station and all the shops, bars boutiques and restaurants surrounding the green itself, as well as further amenities on Fulham Road and the New Kings Road.

- Immaculately presented
- Open plan kitchen/living/dining
- One bedroom, one bathroom
- Residents parking space

Guide Price £360,000



Tenure: Leasehold 124 years 2 months
Service Charge: £1300 PA Approx.
Ground Rent: £10 PA Approx.
Local Authority: Hammersmith & Fulham
Council Tax Band: B

Chestertons Fulham Road Sales

654 Fulham Road
 Fulham
 London
 SW6 5RU

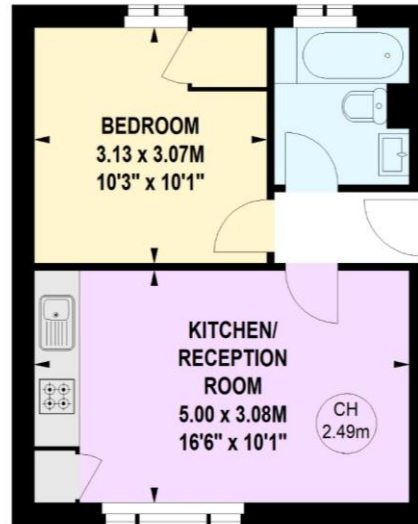
fulham@chestertons.co.uk
 020 7384 9898

Romily Court, SW6

Approximate gross internal area

31.86 sq m / 343 sq ft

Key :
CH - Ceiling Height



Ground Floor

The floor plan is not to scale and measurements and areas shown are approximate and therefore should be used for illustrative purposes only.

The plan has been prepared in accordance with the RICS code of Measuring Practice and whilst we have confidence in the information produced, it must not be relied on.

If there is any aspect of particular importance, you should carry out or commission your own inspection of the property.

