



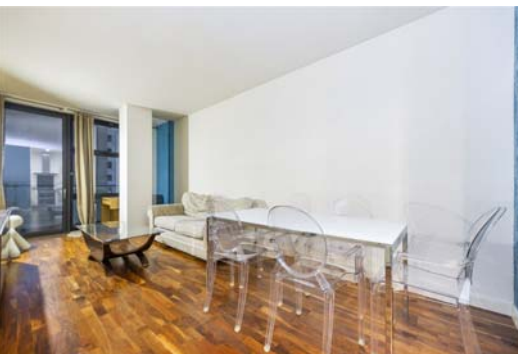
Discovery Dock Apartments West

2 South Quay Square, E14

£600,000 Offers in
excess of

A luxury two bedroom, two bathroom property in the Discovery Dock development near the heart of Canary Wharf. The property comprises an open plan kitchen/ living area, two bedrooms (master ensuite) and two bathrooms and a view over South Dock.

CHESTERTONS



Discovery Dock Apartments West

2 South Quay Square, E14

- 2 Bedrooms 2 Bathrooms.
- Private Balcony Facing Toward South Dock.
- 24 Hour Concierge.
- Superb Location close to Jubilee Place.
- Less than 5 minutes walk to Canary Wharf Underground/Shopping Malls.
- Residents Gym.
- Third Floor.



A luxury two bedroom, two bathroom third floor property in the Discovery Dock development near the heart of Canary Wharf. The property comprises an open plan kitchen/ living area, two bedrooms (master ensuite) and two bathrooms. Features include: wood flooring, integrated kitchen appliances, excellent storage space and modern bathrooms. There is a private balcony which offers views over the South Dock.

Residents of Discovery Dock West benefit by the 24/7 Concierge and onsite fitness facilities.

The centre of Canary Wharf is 6 minutes walk away giving residents access a plethora of restaurants, bars and of course the Cabot Place Shopping Centre. Transport links can be found at both South Quay DLR station (0.1 miles), Canary Wharf underground station (0.3 miles) and Crossrail (0.6 miles).

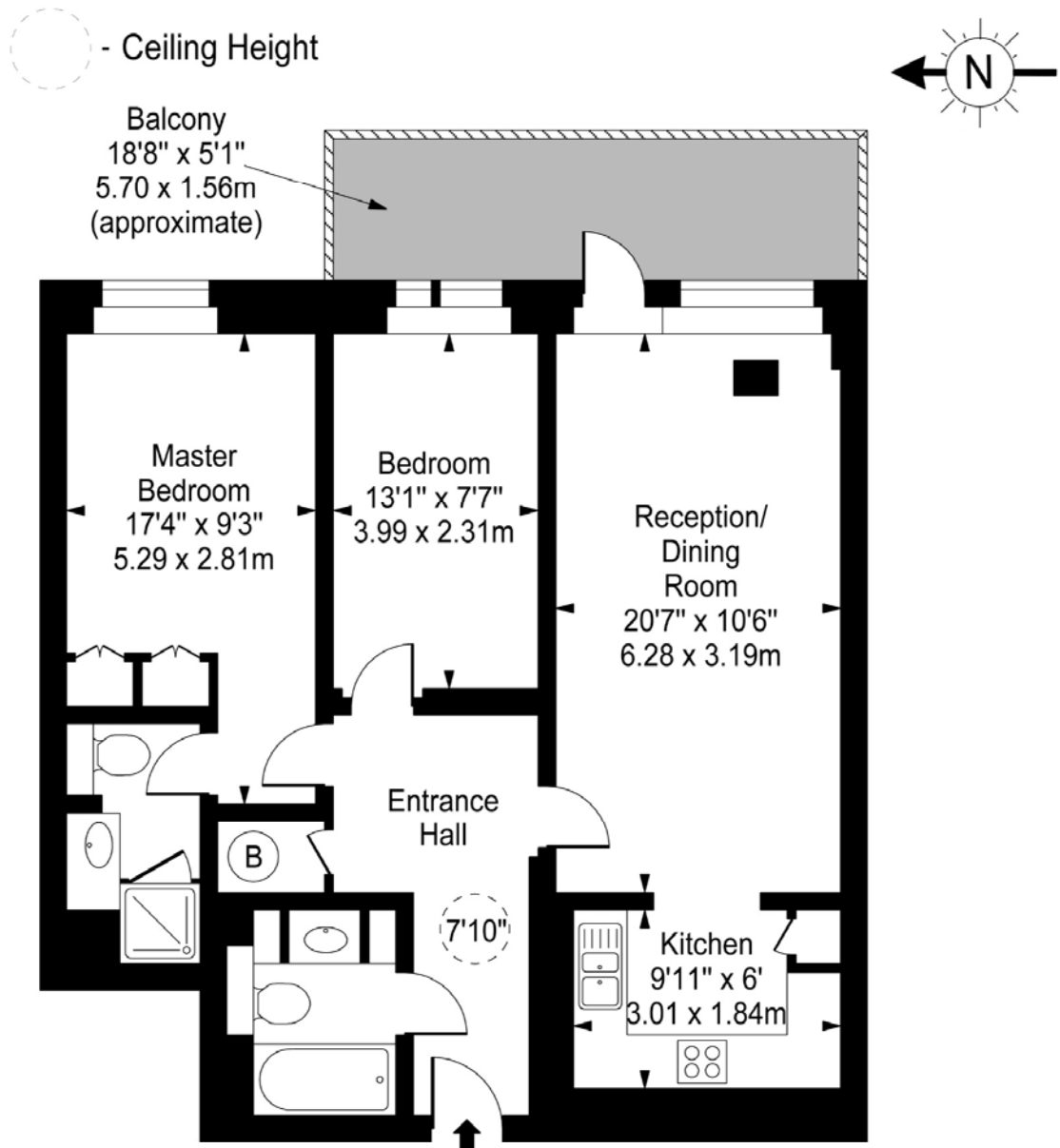
Tenure: Leasehold – 161 years remaining approx.
Service Charge: £5,000pa approx.
Ground Rent: £250pa

Energy Efficiency Rating		
	Current	Potential
Very energy efficient - lower running costs		
(95+) A		
(81-91) B		
(69-80) C	72	72
(55-68) D		
(39-54) E		
(21-38) F		
(1-20) G		
Not energy efficient - higher running costs		
England, Scotland & Wales EU Directive 2002/91/EC		

Chestertons Canary Wharf Sales

Harbour Island
 28 Harbour Exchange Square
 London
 E14 9GE
sales.docklands@chestertons.com
 020 7510 8300
chestertons.com

Discovery Dock Apartments West, E14



Approx Gross Internal Area **774 Sq Ft - 71.90 Sq M**

For Illustration Purposes Only - Not To Scale

www.goldlens.co.uk

Ref. No. 013979AG