



Indecon Square

London, E14

Asking Price £400,000

A spacious & well-kept 8th floor 561sq ft 1 bedroom apartment in the heart of South Quay. Indecon Square benefits from 24hr concierge (in this block), & an excellent location within 800m of the Canary Wharf estate. Offered chain-free.

CHESTERTONS



Indescon Square

London, E14

- 561sq ft 8th floor 1 bedroom apartment.
- West-facing with good natural light.
- 8th floor communal roof terrace.
- 24hr concierge in the entrance to block 15.
- Superb South Quay location.
- Universally-compliant B1-rated EWS1 form.
- Offered chain-free.



A spacious & well-kept 8th floor 561sq ft 1 bedroom apartment in the heart of South Quay. Indecon Square benefits from 24hr concierge (in this block), & an excellent location within 800m of the Canary Wharf estate.

Indecon Square is a modern development, built in 2009 by Galliard Developments. The block possesses a universally-acceptable B1-rated EWS1 form.

Nearby amenities include a 24hr supermarket, a Tian Tian Chinese supermarket, the Canary Wharf Shopping Centre & various local amenities. The property is also within close proximity to Canary Wharf Jubilee Line station & South Quay DLR station, as well as the Elizabeth Line station.

The property is offered chain-free.

Tenure:	Leasehold – 980 years remaining approx.
Service Charge:	£3,000pa approx.
Ground Rent:	£350pa: doubling every 25 years from commencement for the first 100yr:
Local Authority:	Tower Hamlets
Council Tax Band:	D

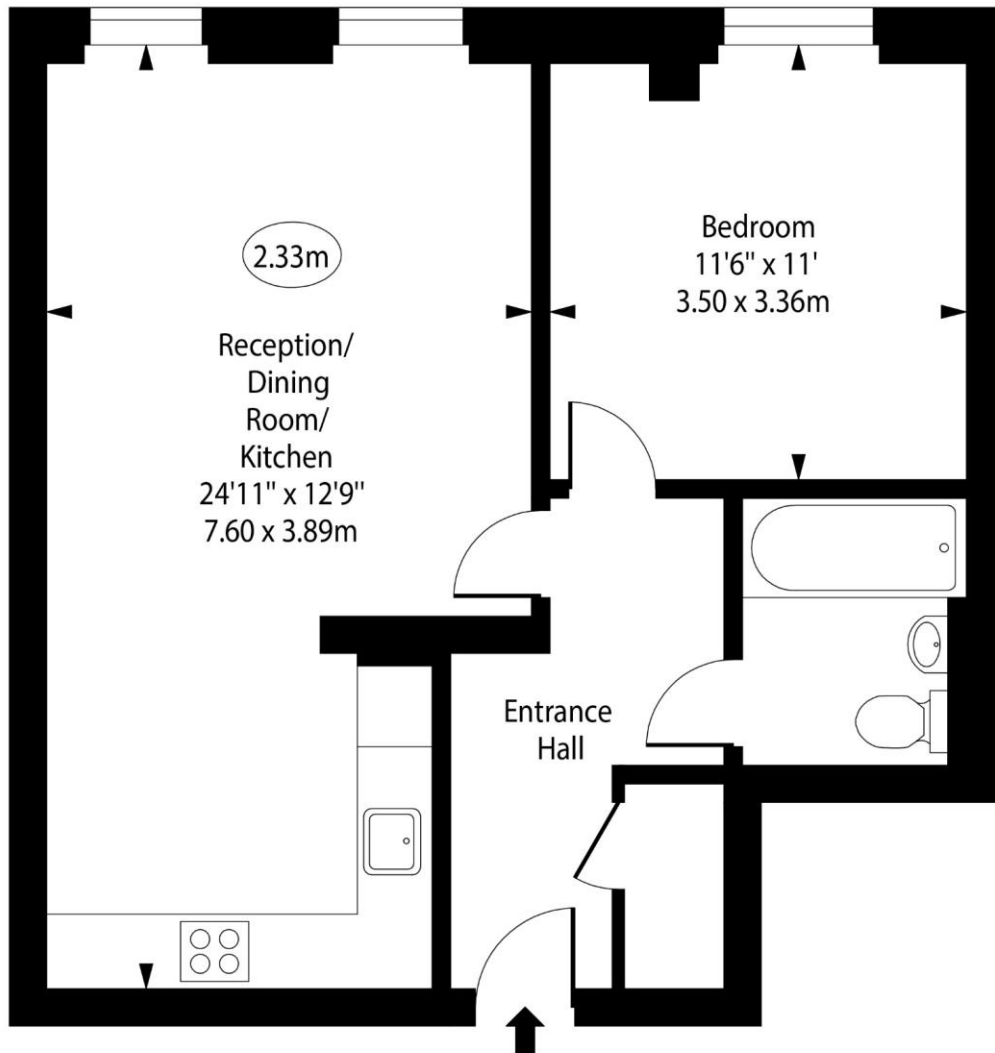
Energy Efficiency Rating		
	Current	Potential
Very energy efficient - lower running costs		
A (92-100)		
B (81-91)	83	83
C (69-80)		
D (55-68)		
E (39-54)		
F (21-38)		
G (1-20)		
Not energy efficient - higher running costs		
England, Scotland & Wales EU Directive 2002/91/EC		

Chestertons Canary Wharf & Greenwich Sales

Harbour Island
28 Harbour Exchange Square
London
E14 9GE
canarywharf@chestertons.co.uk
020 7510 8300
chestertons.co.uk

Indescon Square, E14

○ - Ceiling Height



Eighth Floor

Approx Gross Internal Area 561 Sq Ft - 52.12 Sq M

For Illustration Purposes Only - Not To Scale

www.goldlens.co.uk

Ref. No. 025049IG

