

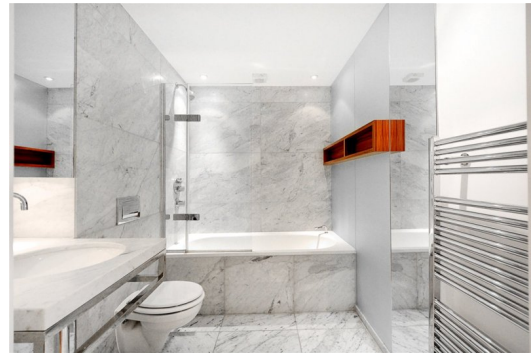


Ontario Tower

Fairmont Avenue, E14

£625,000 Asking Price

A modern River-facing 1,004 square foot two bedroom flat in Ontario Tower. Boasting a modern and hi spec finish throughout, including wooden flooring and marble bathrooms. On-site leisure facilities include a gym and swimming pool. Parking included.



Ontario Tower

Fairmont Avenue, E14

- River views
- Two double bedrooms
- 1004 square feet
- Parking included

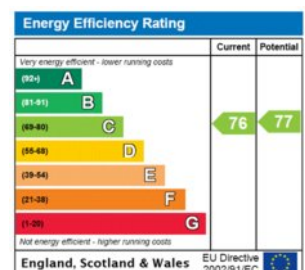


A modern River-facing 1,004 square foot two bedroom flat in Ontario Tower. Boasting a modern and hi spec finish throughout, including wooden flooring and marble bathrooms. On-site leisure facilities include a gym and swimming pool.

New Providence Wharf is an award winning development, located just east of the Canary Wharf Estate. The local area is served by buses and by trains in the form of the DLR, accessed via Blackwall Station, with excellent access to the City and West End.

Parking is included & the property is offered chain-free.

Tenure: Leasehold – 980 years remaining approx.
Service Charge: £11,262pa approx
Ground Rent: £500pa

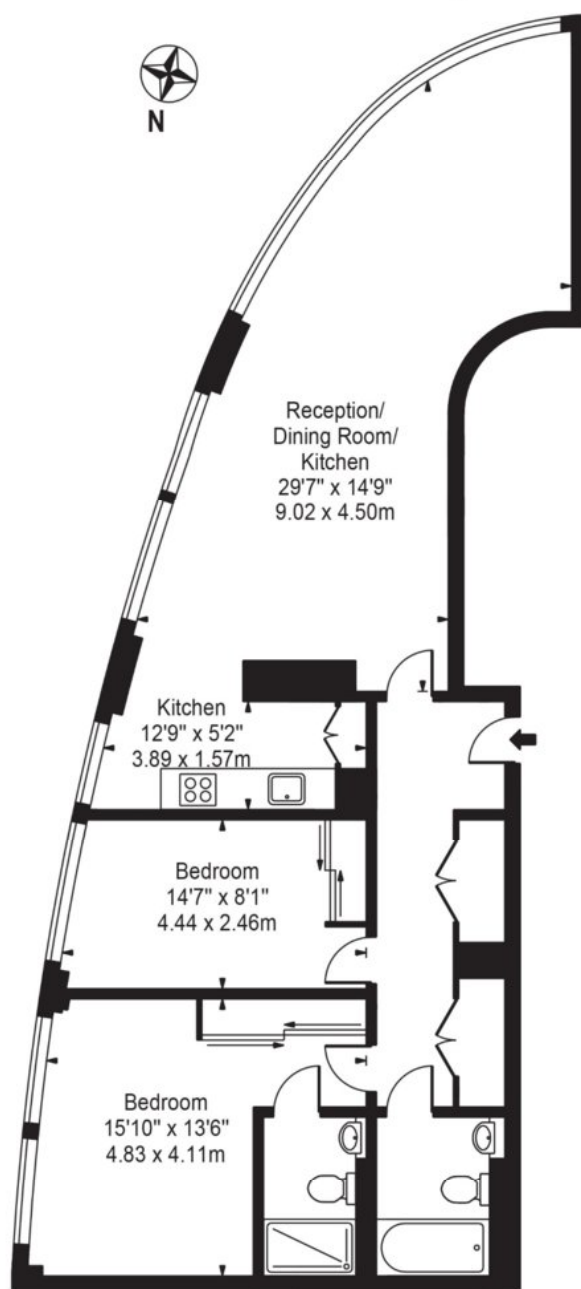


Chestertons Canary Wharf Sales

Harbour Island
28 Harbour Exchange Square
London
E14 9GE
sales.docklands@chestertons.com
020 7510 8300
chestertons.com

Ontario Tower, E14

Approx. Gross Internal Area 1004 Sq Ft - 93.27 Sq M



Tenth Floor
For Illustration Purposes Only - Not To Scale

This floor plan should be used as a general outline for guidance only and does not constitute in whole or in part an offer or contract. Any intending purchaser or lessee should satisfy themselves by inspection, searches, enquiries and full survey as to the correctness of each statement. Any areas, measurements or distances quoted are approximate and should not be used to value a property or be the basis of any sale or let.