



Manchester Grove

London, E14

Offers in Excess of £700,000

A beautifully-presented 3 bedroom end-of-terrace freehold house situated on one of The Isle of Dogs' most sought-after roads. Manchester Grove is located very close to Island Gardens DLR station, The Greenwich Foot Tunnel & Canary Wharf College. Offered chain-free.



Manchester Grove

London, E14

- 928sq ft 3 bedroom end-of-terrace freehold house.
- Off-street parking for 2 cars.
- Located within approximately 250m of Canary Wharf College.
- 100m from Island Gardens DLR station.
- Offered chain-free.



A beautifully-presented 3 bedroom end-of-terrace freehold house situated on one of The Isle of Dogs' most sought-after roads. The house benefits from a rear ground floor extension which incorporates a bespoke kitchen complete with island, & dining room, a South-West-facing garden, a bright aspect, as well as off-street parking for 2 vehicles.

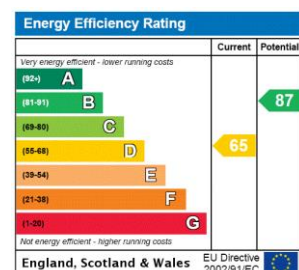
Manchester Grove is located very close to Island Gardens (DLR station & the riverside park), The Greenwich Foot Tunnel & Canary Wharf College, as well as a number of local pubs, convenience stores, takeaways & amenities. The wide open green spaces of Millwall Park are situated within a hundred yards or so, Mudchute Farm and Park is situated just the other side of Millwall Park, & an Asda superstore is located within approximately half a kilometre.

The house is offered chain-free.

Tenure: Freehold

Local Authority: Tower Hamlets

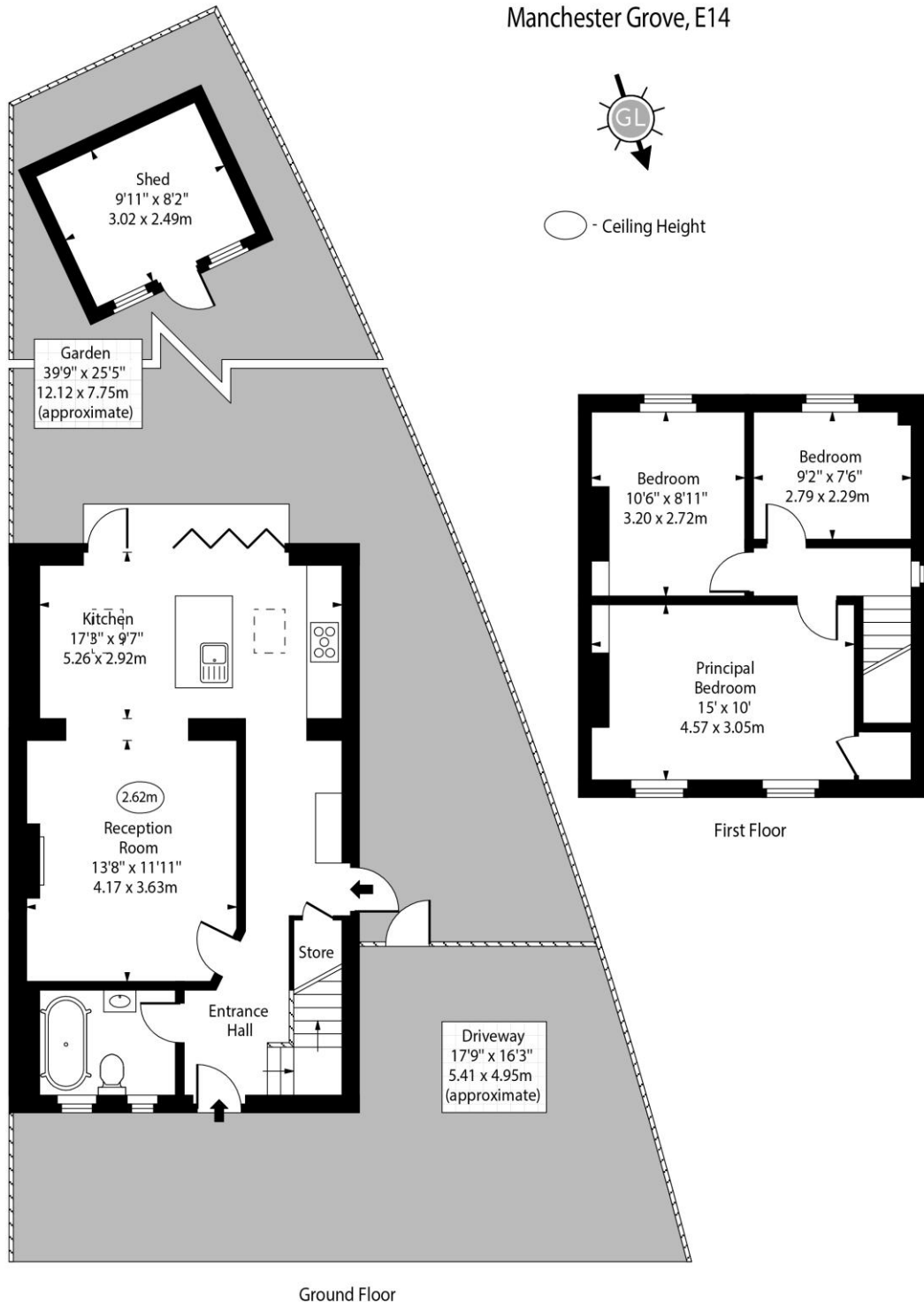
Council Tax Band: D



Chestertons Canary Wharf & Greenwich Sales

Harbour Island
 28 Harbour Exchange Square
 London
 E14 9GE
canarywharf@chestertons.co.uk
 020 7510 8300
chestertons.co.uk

Manchester Grove, E14



Ground Floor
 Approx Gross Internal Area 928 Sq Ft - 86.21 Sq M
 (Excluding Shed)

For Illustration Purposes Only - Not To Scale
www.goldlens.co.uk
 Ref. No. 027114JU