



# Horizons Tower

1 Yabsley Street, E14

Asking Price £400,000

A beautifully-presented 564sq ft 9th floor 1 bedroom apartment with balcony in the well-located Horizons Tower. Benefitting from 24hr concierge & located close to Blackwall DLR station & walking distance to Canary Wharf. Offered chain-free.

**CHESTERTONS**



# Horizons Tower

## 1 Yabsley Street, E14

- Bright 1 bedroom apartment located on the 9th floor.
- Open-plan kitchen with breakfast bar.
- 24 hour concierge.
- Large private balcony.
- Access to residents' gym.
- Offered chain-free.





A beautifully-presented 564sq ft 9th floor 1 bedroom apartment with balcony in the well-located Horizons Tower. Additional benefits include well-proportioned rooms, a high quality interior specification, floor-to-ceiling windows throughout, & far-reaching views from the apartment, & its generous balcony.

Horizons Tower benefits from 24 hour concierge, residents gym, & an excellent location just to the East of Canary Wharf, close to Blackwall DLR station, the new Elizabeth Line station at Canary Wharf, & Canary Wharf's business district, all amenities, shops, bars & restaurants, & the Jubilee Line station. London City Airport is easily accessible via the DLR.

The property is offered chain-free.

<b>Tenure:</b>	Leasehold – 988 years remaining approx.
<b>Service Charge:</b>	£3,155pa approx.
<b>Ground Rent:</b>	£500pa doubling every 20 years for the 1st 100 years of the term
<b>Local Authority:</b>	Tower Hamlets
<b>Council Tax Band:</b>	E

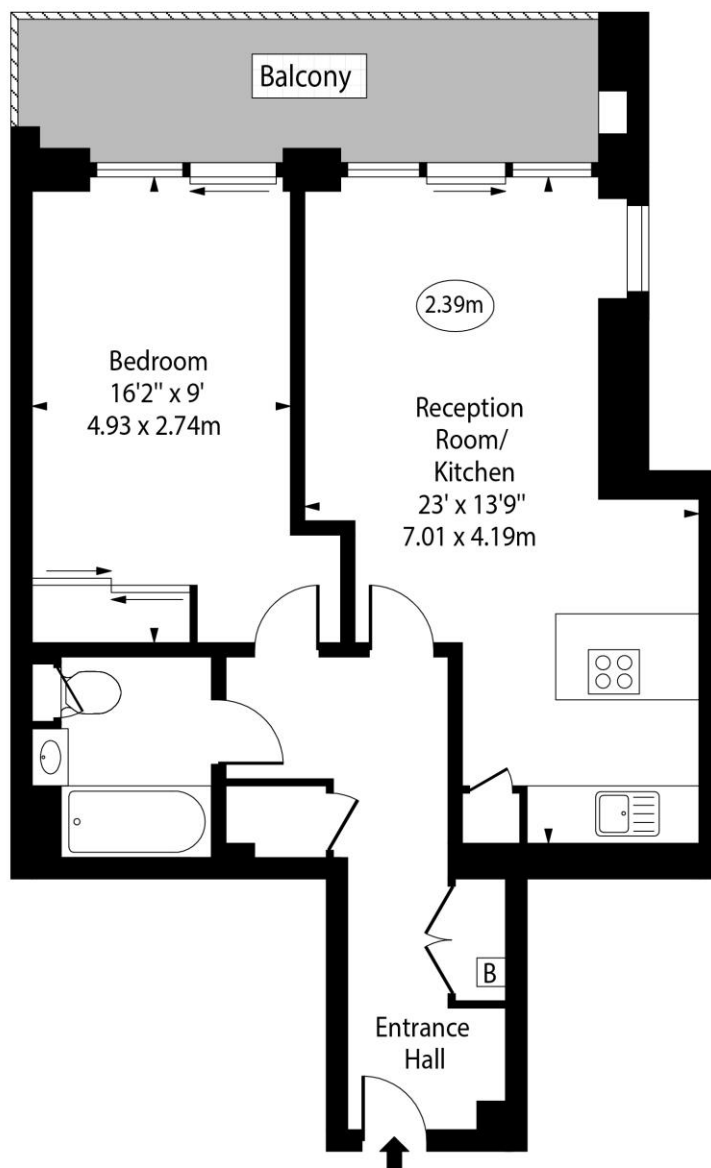
Score	Energy rating	Current	Potential
92+	A		
81-91	B	83 B	83 B
69-80	C		
55-68	D		
39-54	E		
21-38	F		
1-20	G		

### *Chestertons Canary Wharf & Greenwich Sales*

Harbour Island  
 28 Harbour Exchange Square  
 London  
 E14 9GE  
[canarywharf@chestertons.co.uk](mailto:canarywharf@chestertons.co.uk)  
 020 7510 8300  
[chestertons.co.uk](http://chestertons.co.uk)

# Horizons Tower, Yabsley Street, E14

○ - Ceiling Height



Ninth Floor

Approx Gross Internal Area      564 Sq Ft - 52.40 Sq M

Every attempt has been made to ensure the accuracy of the floor plan shown. However, all measurements, fixtures, fittings, and data shown are approximate interpretations and for illustrative purposes only. Measured according to the RICS. Not To Scale.

[www.goldlens.co.uk](http://www.goldlens.co.uk)

Ref. No. 030081K

