



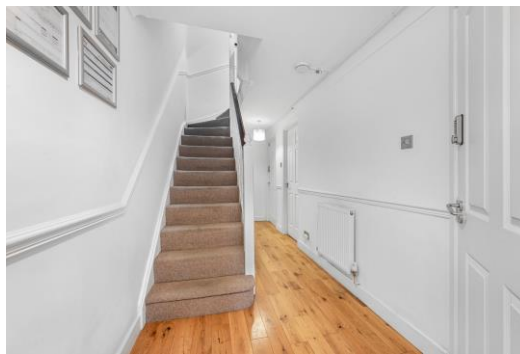
Jamestown Way

London, E14

Asking Price £1,050,000

This beautiful town house is set within the historic Virginia Quay, comprising 4 double bedrooms, large reception, 4 bathrooms with separate fully fitted kitchen. The property benefits from a porter, terrace, private garden and parking.

CHESTERTONS



Jamestown Way

London, E14

- Direct views of the O2 and River Thames
- 4 Double bedrooms | 4 bathrooms
- Private South-facing Balcony
- Large 40 ft Private Rear Garden
- On-site Porter Services and Parking
- East India DLR station 250m



This mid-terrace townhouse, offering approx. 1,500sq ft of internal living space, has commanding views over the River Thames towards London's famous O2 Arena. Accommodation comprises of two double bedrooms and two shower/bathrooms on the ground floor, one of which is en-suite, a large separate kitchen and living room on the first floor, and two further double bedrooms with en-suite bathrooms on the top (2nd) floor.

You can access the large rear garden from the kitchen, and the living room has access to a south-facing, private balcony. The property further benefits from an on-site Porter and parking.

Jamestown Way is located in a private riverside development with Concierge moments from East India DLR station, giving swift access to Canary Wharf, The City and Stratford.

Tenure: Freehold

Service Charge: £0

Ground Rent: £0

Local Authority: Tower Hamlets

Council Tax Band: G

Score	Energy rating	Current	Potential
92+	A		
81-91	B		
69-80	C	78 C	87 B
55-68	D		
39-54	E		
21-38	F		
1-20	G		

Chestertons Canary Wharf & Greenwich Sales

Harbour Island

28 Harbour Exchange Square

London

E14 9GE

canarywharf@chestertons.co.uk

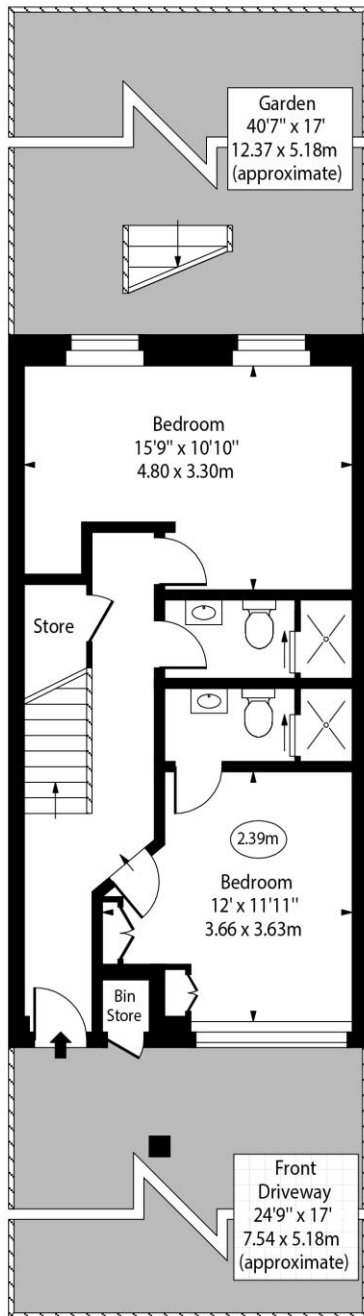
020 7510 8300

chestertons.co.uk

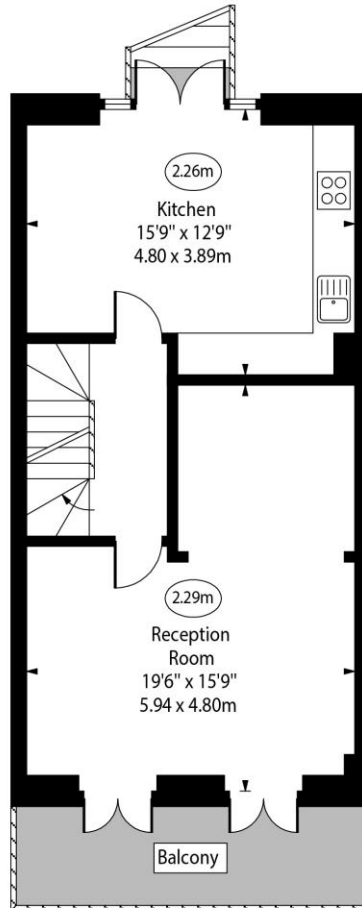
Jamestown Way, E14



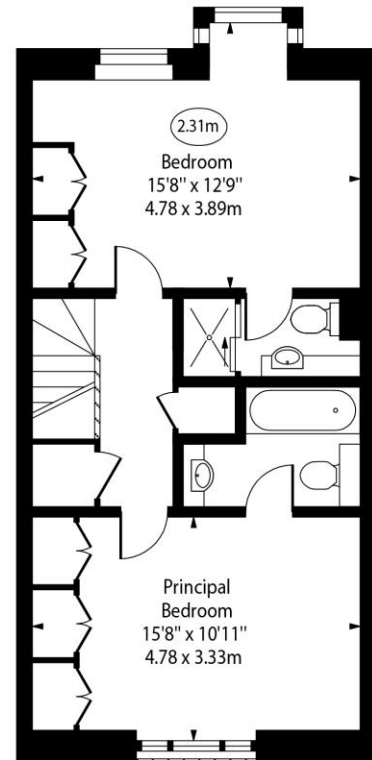
○ - Ceiling Height



Ground Floor



First Floor



Second Floor

Approx Gross Internal Area 1497 Sq Ft - 139.07 Sq M
(Excluding Bin Store)

Every attempt has been made to ensure the accuracy of the floor plan shown. However, all measurements, fixtures, fittings, and data shown are approximate interpretations and for illustrative purposes only. Measured according to the RICS. Not To Scale.

www.goldlens.co.uk
Ref. No. 029918.1K

