



# Capstan Square

London, E14

Asking Price £775,000

An excellent example of a modern terraced 3-bedroom house which has been refurbished to an excellent standard throughout by the current owner. Capstan Square is a private riverside square located at the top of The Isle of Dogs, close to Canary Wharf.





# Capstan Square

## London, E14

- 1130sq ft 3-4 bedroom 2 bathroom terraced freehold house.
- Refurbished throughout to a high standard.
- Excellent location close to Canary Wharf.
- 500m from South Quay DLR station approx.
- Quiet riverside square.
- Driveway parking.



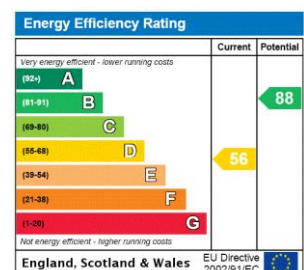


An excellent example of a modern terraced 3-bedroom house which has been refurbished to an excellent standard throughout by the current owner. Capstan Square is a quiet, private, riverside square located at the top of The Isle of Dogs, close to Canary Wharf. The house offers spacious accommodation throughout, including 3 double bedrooms, a spacious reception room with adjoining, hi-spec, kitchen on the 1st floor, as well as a flexible room (formerly the garage) which could be an additional bedroom, reception room, or studio. The house additionally boasts 2 hi-spec bathrooms, as well as a utility room, & driveway parking.

Capstan Square is located on the Northerly end of the Eastern edge of The Isle of Dogs, a short walk from Wood Wharf, which offers a newly-opened pedestrian route to Canary Wharf, its smorgasbord of amenities, shops, bars, & restaurants, Jubilee Line station, & brand new Elizabeth Line station. When complete, Wood Wharf will offer a brand new multi-use district complete with a variety of street-level retail units (380,000sq ft in total), giving a high-tech Shoreditch feel. Additionally there will be a significant new capacity for offices (2 million square feet), with CWG diversifying into more tech corporate tenants, as well as approximately 3,500 new residential homes, & 9 acres of public spaces, squares & parks.

South Quay DLR station is located within 500 metres, approximately.

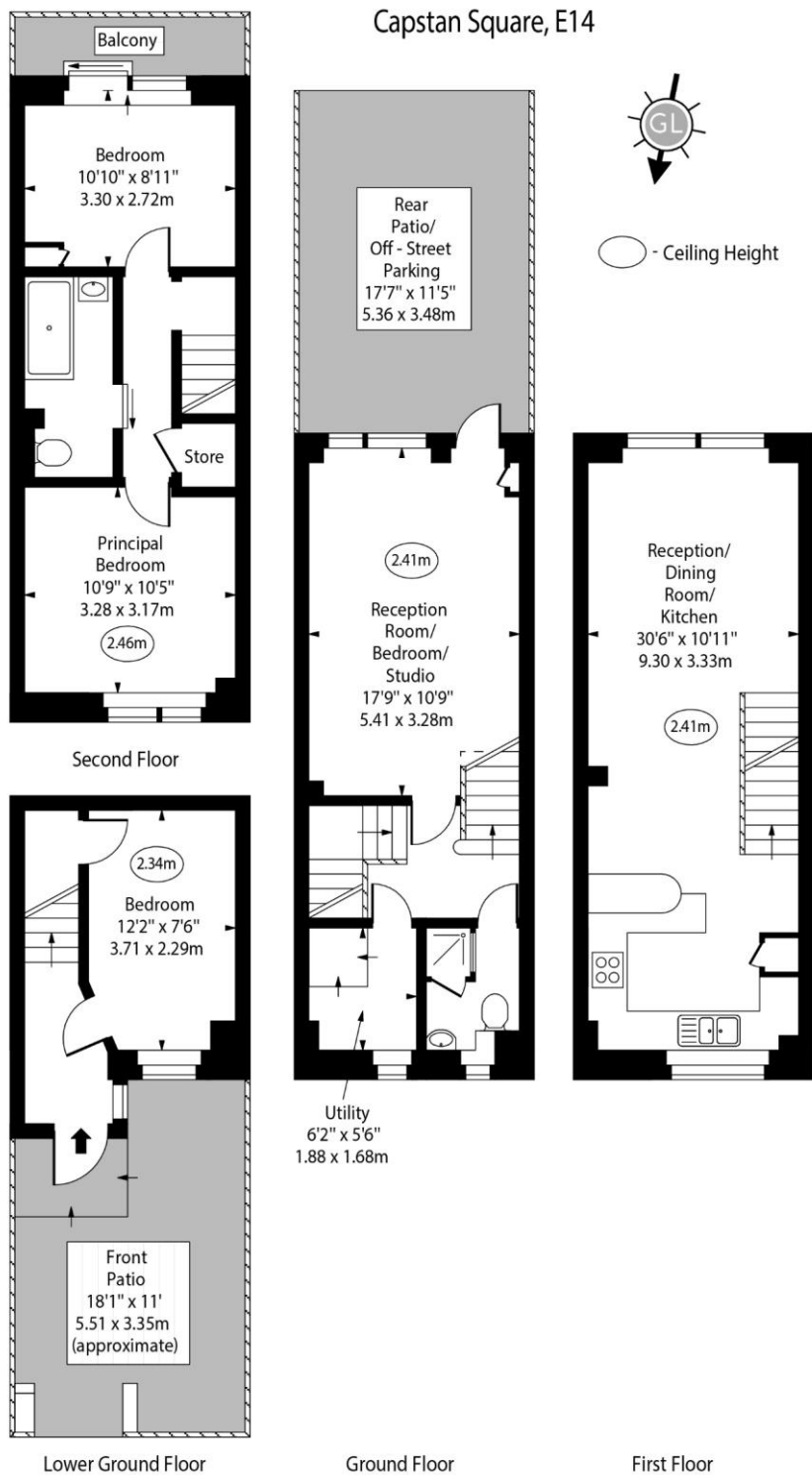
**Tenure:** Freehold  
**Service Charge:** £350pa approx.  
**Ground Rent:** Peppercorn  
**Local Authority:** Tower Hamlets  
**Council Tax Band:** D



### Chestertons Canary Wharf & Greenwich Sales

Harbour Island  
 28 Harbour Exchange Square  
 London  
 E14 9GE  
[sales.docklands@chestertons.co.uk](mailto:sales.docklands@chestertons.co.uk)  
 020 7510 8300  
[chestertons.co.uk](http://chestertons.co.uk)

## Capstan Square, E14



Approx Gross Internal Area 1130 Sq Ft - 104.98 Sq M

For Illustration Purposes Only - Not To Scale  
[www.goldlens.co.uk](http://www.goldlens.co.uk)  
 Ref. No. 019385M

