



## Pierhead Lock

416 Manchester Road, E14

Asking Price £450,000

This impressive one-bedroom, one-bathroom apartment is located in the desired Pierhead Lock development on Manchester Road. Offering approximately 904 sq. ft of stylish living space, the property boasts a generous layout and contemporary design.

**CHESTERTONS**



# Pierhead Lock

416 Manchester Road, E14

- One Bedroom | One Bathroom
- 904sq ft of Internal Living Space
- Private Balcony with Partial River Views
- South Quay DLR Station 0.5km
- Premier Canary Wharf Development
- Parking Space





This spacious accommodation features one generously sized bedroom and a sleek, modern ensuite. The bright and airy reception room is enhanced by floor-to-ceiling windows that open onto a private balcony, offering stunning river views. A separate, fully fitted wooden kitchen with integrated appliances provides a stylish and practical space for cooking. Throughout the apartment, elegant glossy flooring adds warmth and character. A dedicated parking space is also included for added convenience.

Situated in the desirable Pierhead Lock development, just southeast of the Canary Wharf estate, the location offers easy access to a variety of shops, bars, and restaurants. South Quay DLR station is only moments away, ensuring excellent transport connections across London.

This apartment presents a rare opportunity to enjoy riverside living in one of the capital's most coveted neighbourhoods.

---

**Tenure:** Leasehold 969 years approx. remaining

**Service Charge:** TBC

**Ground Rent:** £150 pa (Increasing every 21st anniversary from the Commencement)

**Local Authority:** Tower Hamlets

**Council Tax Band:** F

Score	Energy rating	Current	Potential
92+	A		
81-91	B		
69-80	C		80 C
55-68	D	68 D	
39-54	E		
21-38	F		
1-20	G		

---

### *Chestertons Canary Wharf & Greenwich Sales*

Harbour Island

28 Harbour Exchange Square

London

E14 9GE

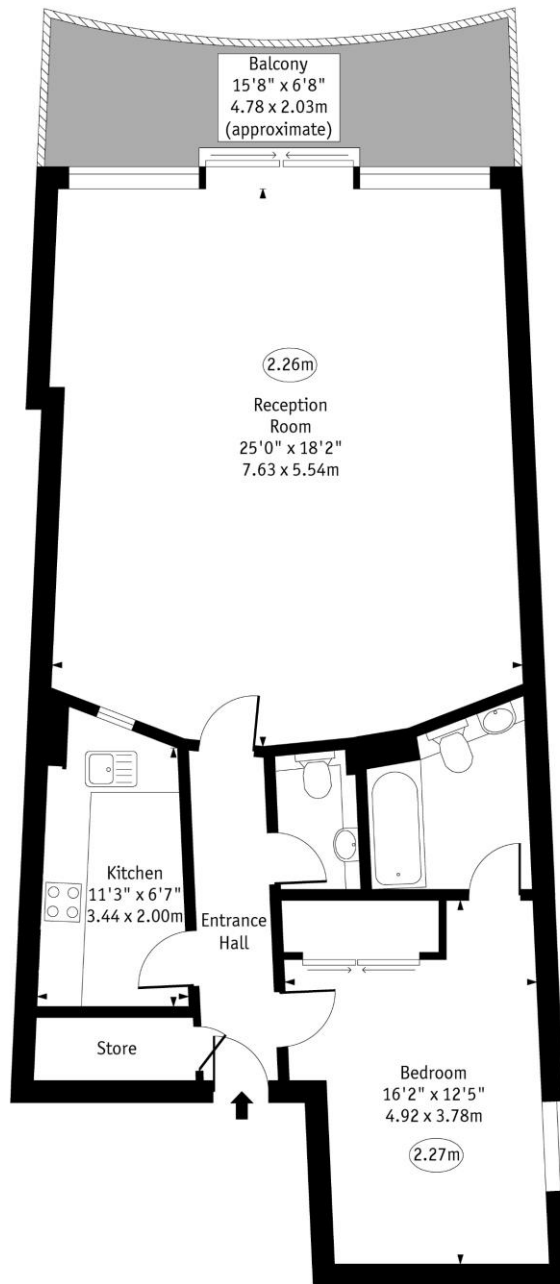
canarywharf@chestertons.co.uk

020 7510 8300

chestertons.co.uk

Pierhead Lock,  
Manchester Road, E14

○ - Ceiling Height



Ground Floor

Approx Gross Internal Area 904 Sq Ft - 84.04 Sq M

Every attempt has been made to ensure the accuracy of the floor plan shown. However, all measurements, fixtures, fittings, and data shown are approximate interpretations and for illustrative purposes only. Measured according to the RICS. Not To Scale.  
www.goldlens.co.uk  
Ref. No. 029353WiH

