



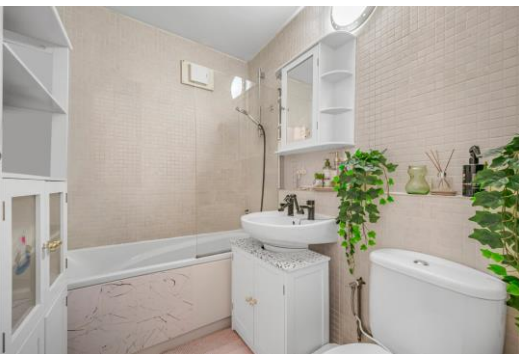
# Chart House

6 Burrells Wharf Square, E14

Asking Price £315,000

A charming one-bedroom apartment with private balcony and parking, located in Burrell's Wharf Square on the Isle of Dogs: a popular private development, within close proximity to excellent transport links & amenities.

**CHESTERTONS**



# Chart House

6 Burrells Wharf Square, E14

- 1 Bedroom | 565sq ft Internal Living Space
- Private Balcony
- Secure On-Site Parking
- On-Site Leisure Facilities incl. Swimming Pool, Gym, Spa and Sauna
- 24 Hour concierge
- Mudchute DLR Station 0.5km
- Masthouse Pier for Thames Clipper 0.15km





This large one-bedroom apartment offers in excess of 570sq ft of internal living space that comprises of a generous living space, a fully separate kitchen, a good-sized bedroom and a well-presented three-piece bathroom suite. Both the bedroom and the living room shared access onto a private balcony. The property also benefits from allocated parking as well.

Burrell's Wharf was the site of the construction of (at the time) the world's largest steam ship - SS Great Eastern. The 1850s & 1860s-built buildings were converted in the late 1980s by Galliard Homes, & the site was completed in the early 1990s with the addition of a number of newly built blocks.

Burrell's Wharf features a community feel absent in many developments in the area. The development is centred around a communal courtyard & is located next to the River Thames. On-site facilities are excellent: well-staffed site office (24-hour porteraqe), a residents' gym, sauna & swimming pool.

**Tenure:** Share of Freehold 962 years approx. remaining

**Service Charge:** £6820.88 pa approx.

**Ground Rent:** £10 From 24 June 2113, the annual rent of a peppercorn if demanded.

**Local Authority:** Tower Hamlets

**Council Tax Band:** D

Score	Energy rating	Current	Potential
92+	A		
81-91	B		
69-80	C	79 C	79 C
55-68	D		
39-54	E		
21-38	F		
1-20	G		

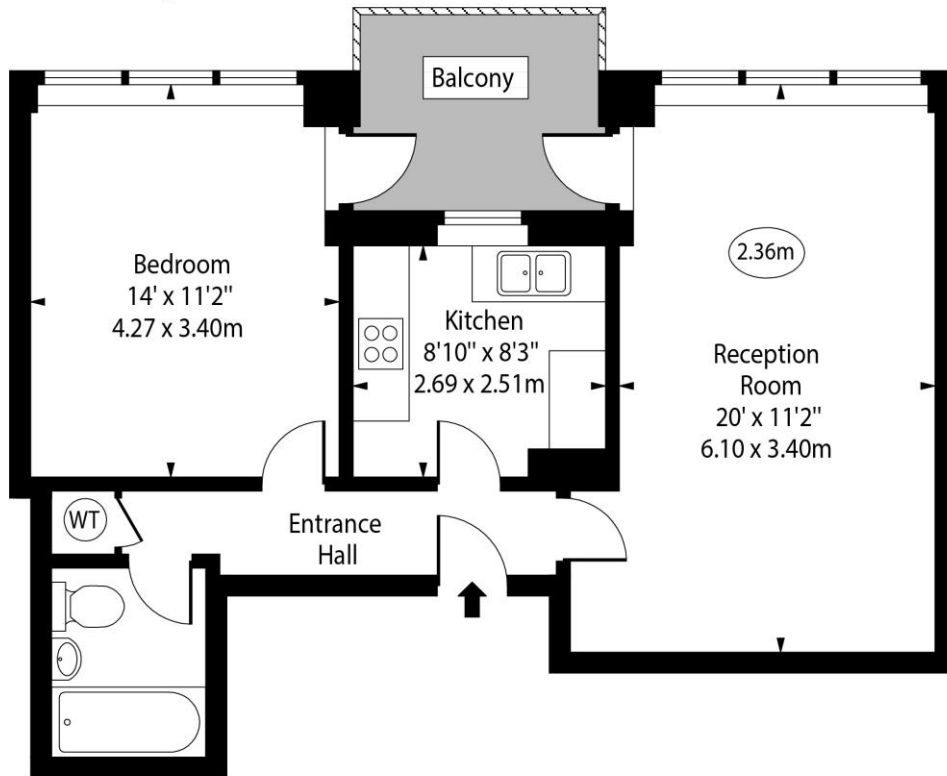
### *Chestertons Canary Wharf & Greenwich Sales*

Harbour Island  
 28 Harbour Exchange Square  
 London  
 E14 9GE  
[canarywharf@chestertons.co.uk](mailto:canarywharf@chestertons.co.uk)  
 020 7510 8300  
[chestertons.co.uk](http://chestertons.co.uk)

# Chart House, Burrells Wharf Square, E14



○ - Ceiling Height



Third Floor

Approx Gross Internal Area      570 Sq Ft - 52.95 Sq M

Every attempt has been made to ensure the accuracy of the floor plan shown. However, all measurements, fixtures, fittings, and data shown are approximate interpretations and for illustrative purposes only. Measured according to the RICS. Not To Scale.

[www.goldlens.co.uk](http://www.goldlens.co.uk)

Ref. No. 029188K

