



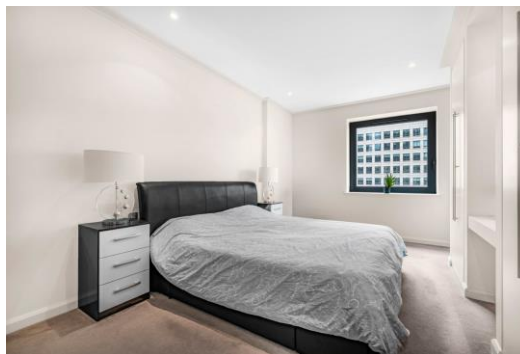
Discovery Dock Apartments East

3 South Quay Square, E14

Asking Price £600,000

An 11th floor 964sq ft 2 bedroom 2 bathroom apartment in the exceptionally well-located Discovery Dock East development. The apartment boasts high quality fixtures & fittings throughout, & superb dock & Canary Wharf views. Offered chain free.

CHESTERTONS



Discovery Dock Apartments East

3 South Quay Square, E14

- 964sq ft 11th floor 2 bedroom 2 bathroom apartment.
- Prestigious development with 24 hour concierge, gym & swimming pool.
- Superbly located 250m from Canary Wharf Jubilee Line station.
- Offered chain free.



An 11th floor 964sq ft 2 bedroom 2 bathroom apartment in the exceptionally well-located Discovery Dock East development. The apartment boasts high quality fixtures & fittings throughout, & superb dock & Canary Wharf views.

Discovery Dock East benefits from 24 hour concierge, residents' gym & swimming pool, & is conveniently located within 300 metres of Canary Wharf tube station & business district.

Set adjacent to South Dock, Discovery Dock East is located close to the full amenities available throughout Canary Wharf and Crossrail Place. Transport Links are available close by: South Quay DLR connecting Greenwich, City Airport and The City, with the Jubilee Line available from Canary Wharf Station easily connecting to the West End and the Elizabeth Line station offering access to Heathrow Airport in approximately 45 minutes.

Offered chain free.

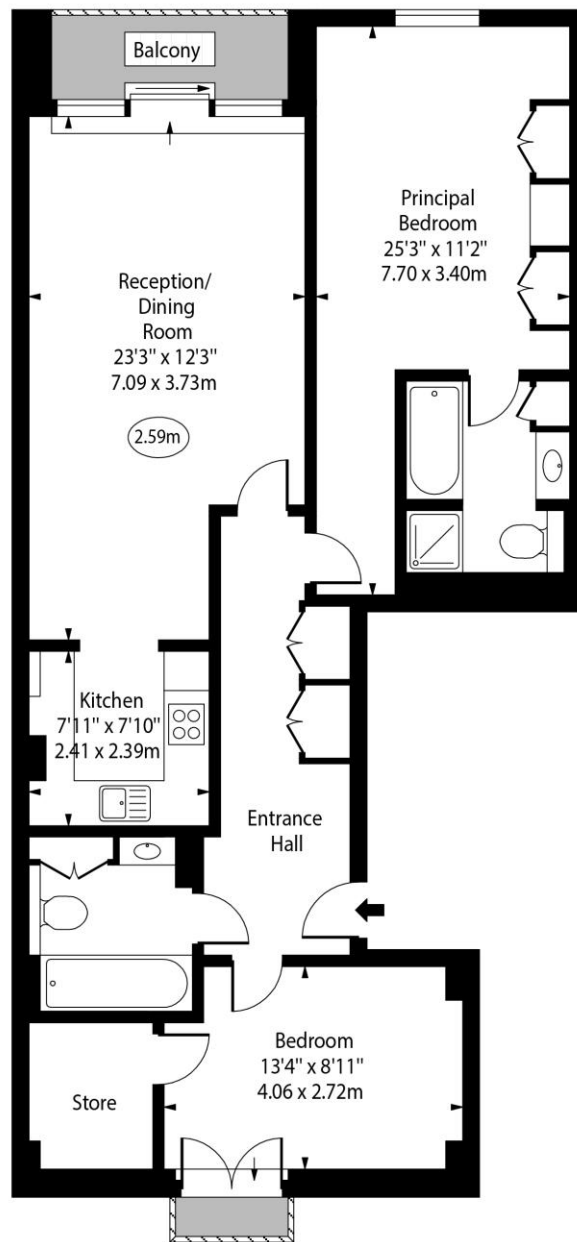
Tenure:	Leasehold – 975 years remaining approx.
Service Charge:	£8,714pa approx.
Ground Rent:	£250pa
Local Authority:	Tower Hamlets
Council Tax Band:	E

Chestertons Canary Wharf & Greenwich Sales

Harbour Island
28 Harbour Exchange Square
London
E14 9GE
canarywharf@chestertons.co.uk
020 7510 8300
chestertons.co.uk

Discovery Dock Apartments East,
South Quay Square, E14

○ - Ceiling Height



Eleventh Floor

Approx Gross Internal Area 964 Sq Ft - 89.55 Sq M

Every attempt has been made to ensure the accuracy of the floor plan shown.
However, all measurements, fixtures, fittings, and data shown are approximate interpretations and
for illustrative purposes only. Measured according to the RICS. Not To Scale.

www.goldlens.co.uk

Ref. No. 029044K

