



# Vermeer Court

1 Rembrandt Close, E14

Asking Price £475,000

A beautifully presented 740 sq ft 2nd & 3rd floor apartment consisting of 2 bedrooms in Vermeer Court in the London Yard development. Vermeer Court is situated in a quiet spot on the Eastern side of the Isle of Dogs, next to The River Thames.

**CHESTERTONS**





# Vermeer Court

## 1 Rembrandt Close, E14

- 2 bedroom | 2 bathroom Duplex Apartment
- 740sq ft Internal Living Space
- Two Private Balconies
- Fantastic River Views
- Quiet Riverside Location
- Crossharbour DLR Station 0.65km
- EWS1 Compliant





A 740sq ft 2nd & 3rd floor 2 bedroom apartment in Vermeer Court in the London Yard development. The property benefits from two double bedrooms, two bathrooms suites (one of which is en-suite), two private balconies, and a modern, separate kitchen adjoining the spacious reception room. The balcony accessible off of the main reception room offers views towards the O2 Arena, as well as expansive vistas over the River Thames.

The apartment also has a newly installed combi-boiler with 10 year extended guarantee, including parts and labour from 04/08/2025 - 03/08/2035.

Vermeer Court is situated in a quiet spot on the Eastern side of the Isle of Dogs, next to The River Thames. London Yard is a private, residential development located within 600m of Crossharbour DLR station.

Residents' parking permits can be obtained for up to 3 vehicles.

**Tenure:** Leasehold 957 years approx. remaining.

**Service Charge:** £2,850 pa approx.

**Ground Rent:** £40 pa

**Local Authority:** Tower Hamlets

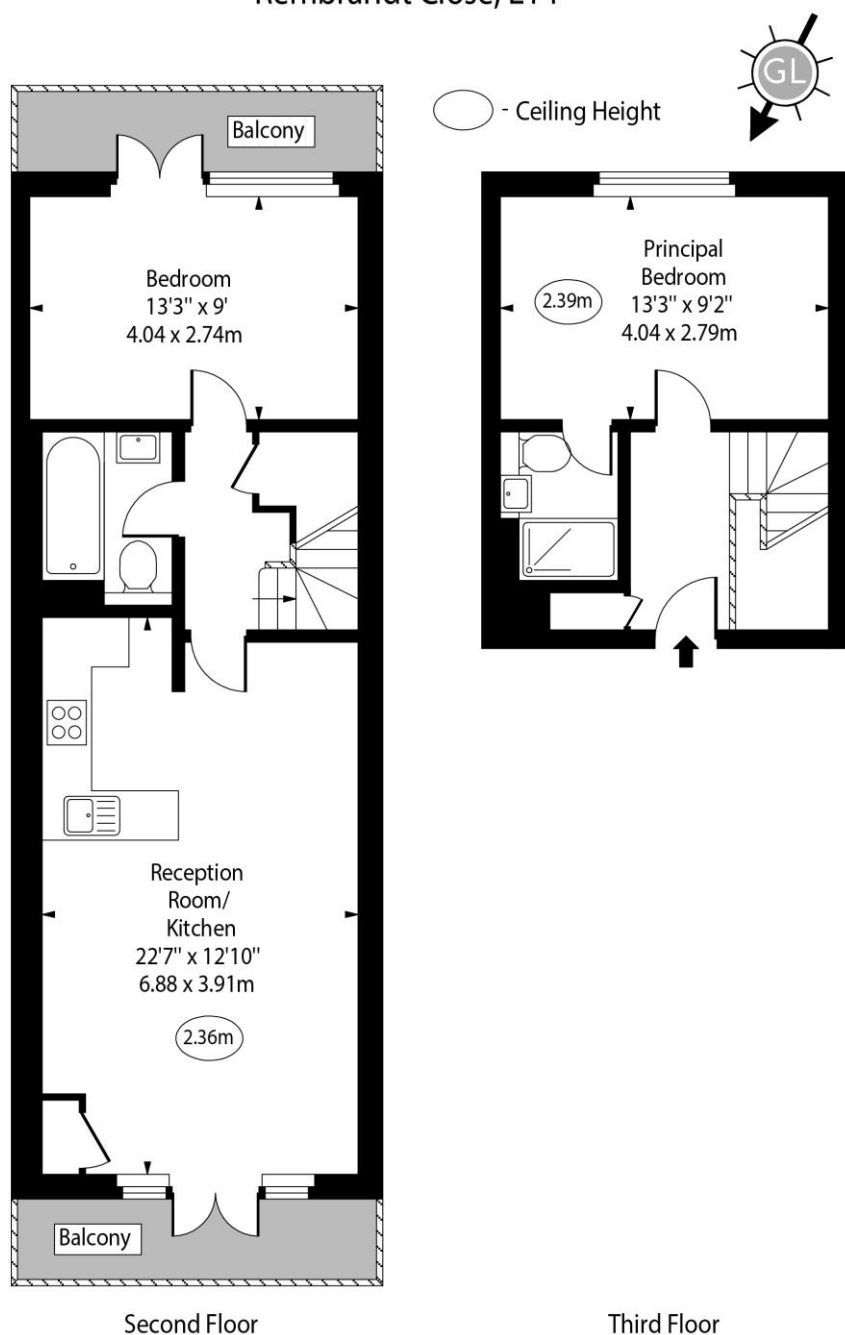
**Council Tax Band:** E

Score	Energy rating	Current	Potential
92+	A		
81-91	B	83 B	83 B
69-80	C		
55-68	D		
39-54	E		
21-38	F		
1-20	G		

### *Chestertons Canary Wharf & Greenwich Sales*

Harbour Island  
 28 Harbour Exchange Square  
 London  
 E14 9GE  
[canarywharf@chestertons.co.uk](mailto:canarywharf@chestertons.co.uk)  
 020 7510 8300  
[chestertons.co.uk](http://chestertons.co.uk)

Vermeer Court,  
Rembrandt Close, E14



Approx Gross Internal Area

740 Sq Ft - 68.75 Sq M

Every attempt has been made to ensure the accuracy of the floor plan shown. However, all measurements, fixtures, fittings, and data shown are approximate interpretations and for illustrative purposes only. Measured according to the RICS. Not To Scale.

[www.goldlens.co.uk](http://www.goldlens.co.uk)

Ref. No. 028924K

