



Manchester Grove

London, E14

Asking Price £650,000

A two-bedroom mid-terrace 1920s freehold house on Manchester Grove. The house needs modernization and offers buyers a great opportunity to live in one of the most sought-after roads on the Isle of dogs.

CHESTERTONS



Manchester Grove

London, E14

- Superb Two Bedroom Dockers Cottage.
- Mid-terrace
- Conservatory
- Catchment Area for Canary Wharf College
- East Facing Garden.
- Close to Island Gardens DLR
- Access to Millwall Park
- Chain Free



A two-bedroom mid-terrace house with conservatory and large garden. The house needs modernization and offers buyers a great opportunity to live in one of the most sought-after roads on the Isle of dogs. Manchester Grove is a highly desirable tree lined street 0.1 mile from the DLR of Island Gardens which connects to Canary Wharf, Bank and Greenwich. The house is also favourably positioned within the Canary Wharf College catchment area and is close to the greens of Millwall Park.

Tenure: Freehold
Service Charge: £0
Ground Rent: £0
Local Authority: Tower Hamlets
Council Tax Band: D

Score	Energy rating	Current	Potential
92+	A		
81-91	B		
69-80	C		
55-68	D	61 D	91 B
39-54	E		
21-38	F		
1-20	G		

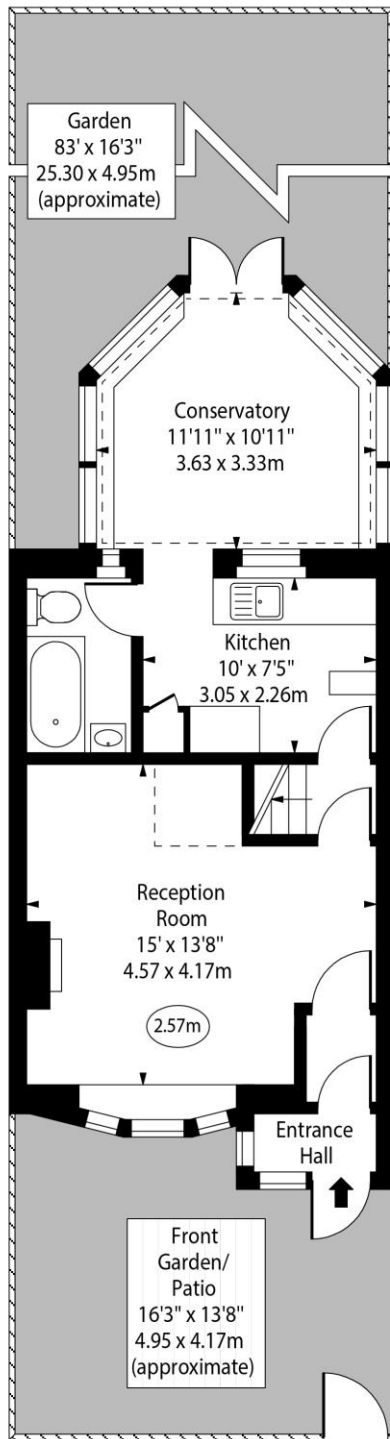
Chestertons Canary Wharf & Greenwich Sales

Harbour Island
28 Harbour Exchange Square
London
E14 9GE
canarywharf@chestertons.co.uk
020 7510 8300
chestertons.co.uk

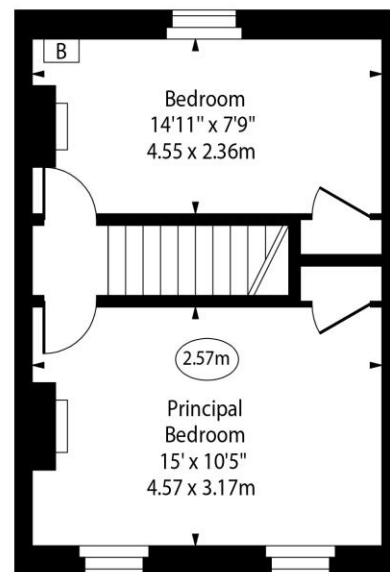
Manchester Grove, E14



○ - Ceiling Height



Ground Floor



First Floor

Approx Gross Internal Area

815 Sq Ft - 75.71 Sq M

For Illustration Purposes Only - Not To Scale

www.goldlens.co.uk

Ref. No. 027545K

