



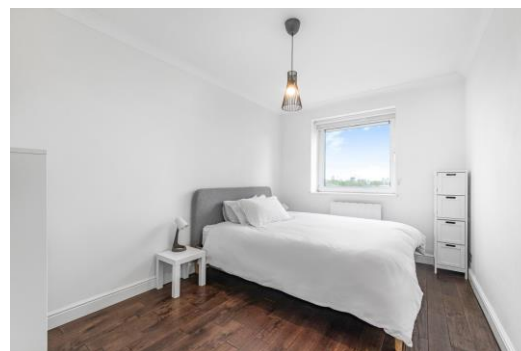
# Boardwalk Place

London, E14

Asking Price £650,000

A well-presented 872sq ft 6th floor 2 bedroom, 2 bathroom apartment in the ever-popular Boardwalk Place development. The property boasts a South-facing balcony adjoining the reception with views over the Blackwall Basin.





# Boardwalk Place

London, E14

- 6th floor 2 bedroom apartment with balcony.
- 872sq ft Internal Living Space
- South-facing views over the Blackwall Basin.
- Superb location adjoining the Eastern edge of the Canary Wharf Estate.
- 24 hour portage.
- Secure Underground Parking
- Offered chain-free.





This 872 sq. ft., sixth-floor, two-bedroom, two-bathroom apartment nestled in the vibrant Boardwalk Place development is just a stone's throw away from Canary Wharf. This apartment offers stunning views of the Blackwall Basin marina from the private balcony, and the open-plan kitchen and living area. The property also benefits from gigabit fiber-optic broadband and secure underground parking.

Boardwalk Place is conveniently located less than 200m from the upcoming Wood Wharf site, a future hub for commercial and retail spaces set to complete in 2025, adding even more value to this thriving area.

Conveniently situated just 0.6km from Canary Wharf Jubilee and Elizabeth Line Station, this apartment also provides easy access to London Bridge, the iconic West End, and onward travel to Heathrow Airport.

**Tenure:** Leasehold 971 years approx. remaining.

**Service Charge:** £6,171 pa approx.

**Ground Rent:** £200 pa.

**Local Authority:** Tower Hamlets

**Council Tax Band:** E

Score	Energy rating	Current	Potential
92+	A		
81-91	B		
69-80	C		
55-68	D	68 D	82 B
39-54	E		
21-38	F		
1-20	G		

### *Chestertons Canary Wharf & Greenwich Sales*

Harbour Island

28 Harbour Exchange Square

London

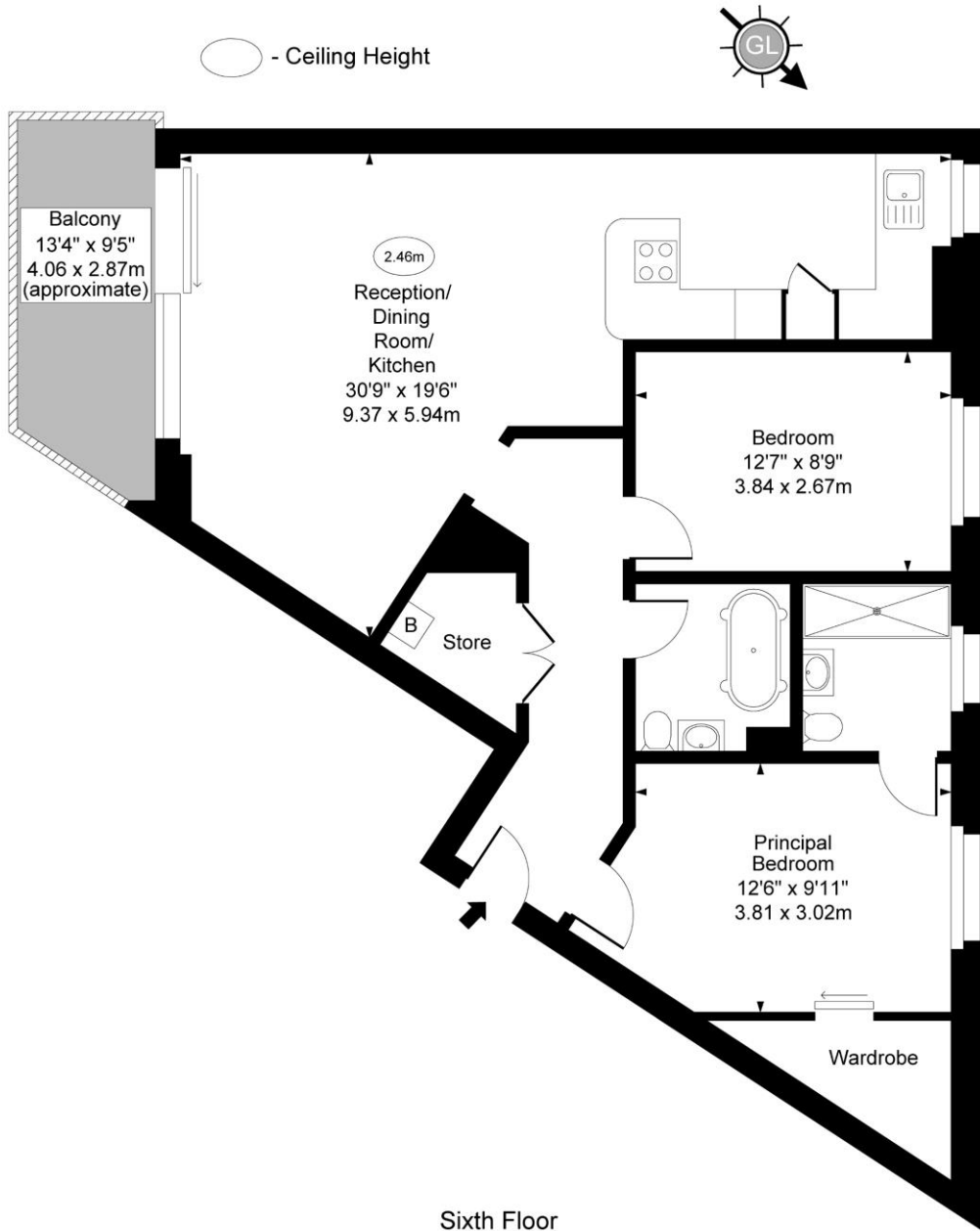
E14 9GE

canarywharf@chestertons.co.uk

020 7510 8300

chestertons.co.uk

## Boardwalk Place, E14



Sixth Floor

Approx Gross Internal Area      872 Sq Ft - 81.01 Sq M

For Illustration Purpose Only - Not To Scale  
[www.goldlens.co.uk](http://www.goldlens.co.uk)  
Ref. No. 027540KH

