



# Francis Close

London, E14

Asking Price £500,000

A 2 bedroom freehold terraced house, with garden, in a quiet residential development on the Isle of Dogs. Francis Close is situated close to local shops & bus-routes, & is within walking distance of the Greenwich foot tunnel & Island Gardens DLR.



# Francis Close

## London, E14

- Two Bedroom Freehold House
- Private Patio Garden
- Off-Street Parking
- Island Gardens DLR Station (0.5km)
- Open-Plan Living Space
- Chain free





A superbly located Isle of Dogs two-bedroom terraced house featuring a spacious reception room with access to a modern kitchen and bijou patio garden with shed. Accommodation comprises of two double bedrooms upstairs, a three-piece bathroom suite and the semi open-plan living-kitchen arrangement on the ground floor. The low maintenance private rear garden provides the perfect space for your morning coffee or drinks with friends, and the property also benefits from an allocated off-street parking space.

The travel connections are excellent whether you drive, cycle or use public transport and are aided by Residents parking and by way of Island Gardens DLR. Francis Close is perfectly located for enjoyment of the docks, Mudchute Park and the selection of shops, bars and restaurants in Canary Wharf as well as access to the open green space Millwall Park.

**Tenure:** Freehold

**Service Charge:** £508 pa. approx.

**Ground Rent:** £5 pa.

**Local Authority:** Tower Hamlets

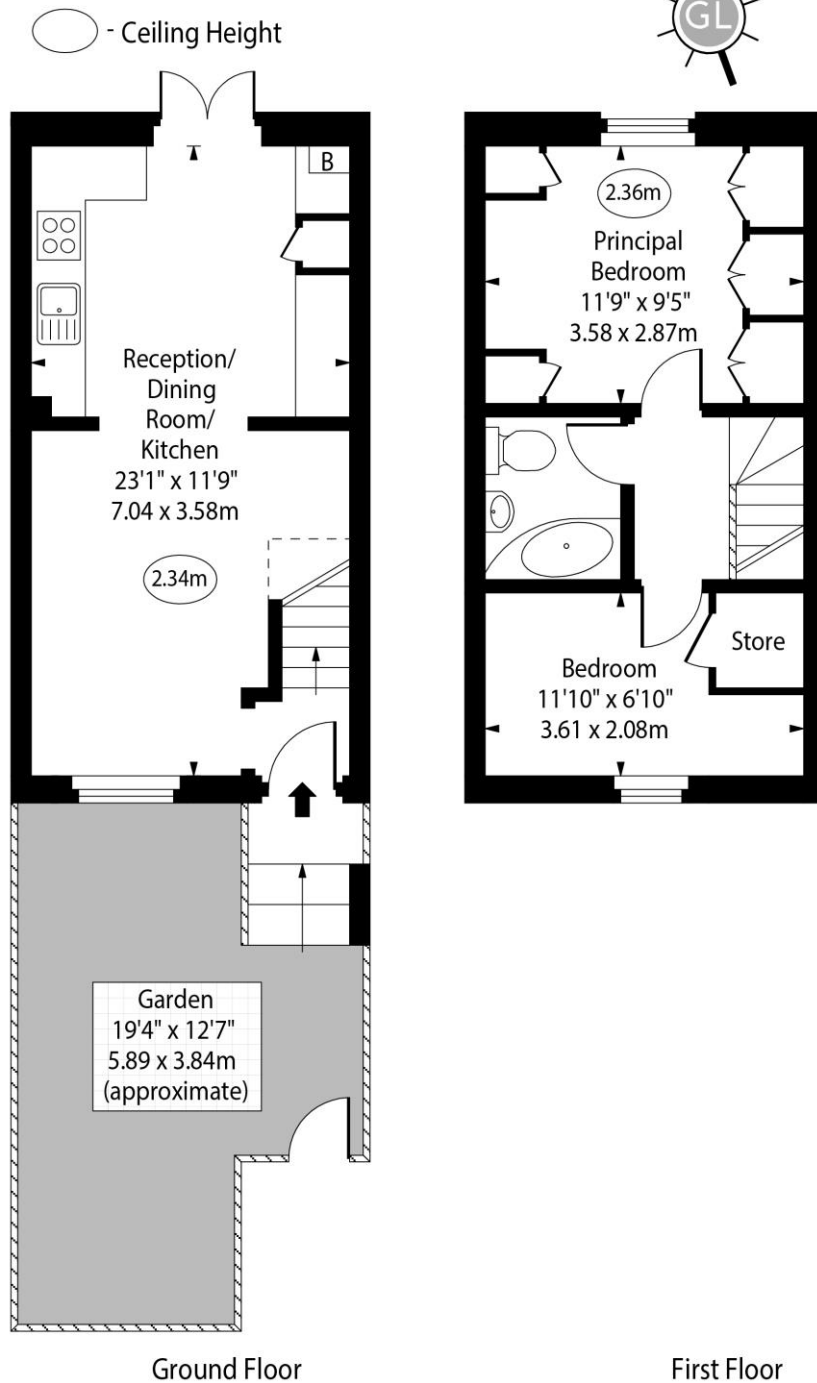
**Council Tax Band:** D

Score	Energy rating	Current	Potential
92+	A		
81-91	B		90 B
69-80	C	75 C	
55-68	D		
39-54	E		
21-38	F		
1-20	G		

## Chestertons Canary Wharf & Greenwich Sales

Harbour Island  
28 Harbour Exchange Square  
London  
E14 9GE  
canarywharf@chestertons.co.uk  
020 7510 8300  
chestertons.co.uk

# Francis Close, E14



Approx Gross Internal Area 550 Sq Ft - 51.10 Sq M

For Illustration Purposes Only - Not To Scale

[www.goldlens.co.uk](http://www.goldlens.co.uk)

Ref. No. 027527K

