



Whitby House

26 Marsh Wall, E14

Asking Price £350,000

This bright one bedroom apartment in Whitby House has an open plan kitchen/reception room and a large double bedroom located within a short walk of Canary wharf and Heron Quay Jubilee and DLR.



Whitby House

26 Marsh Wall, E14

- One bedroom apartment
- Modern development
- Integrated appliances
- 6th Floor
- Close to Canary Wharf
- Bicycle Storage



A modern one bedroom apartment set on the 6th floor of this secure contemporary development, boasting a bright open-plan kitchen/reception and a large bedroom. Whitby House benefits from being moments from the fantastic selection of shops, bars and restaurants in Canary Wharf while being close to the River Thames. Connectivity to public transport is ample with access to tube, DLR, bus network and even Thames clipper all close by. The nearest stations are Heron Quay DLR and Canary Wharf tube within a short walking distance.

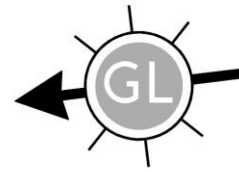
Tenure: Leasehold - 108 years remaining approx.
Service Charge: £2,355pa approx.
Ground Rent: Peppercorn
Local Authority: Tower Hamlets
Council Tax Band: D

Energy Efficiency Rating		
	Current	Potential
Very energy efficient - lower running costs		
(94-100) A		
(81-93) B	82	82
(69-80) C		
(55-68) D		
(39-54) E		
(21-38) F		
(1-20) G		
Not energy efficient - higher running costs		
England, Scotland & Wales		EU Directive 2002/91/EC

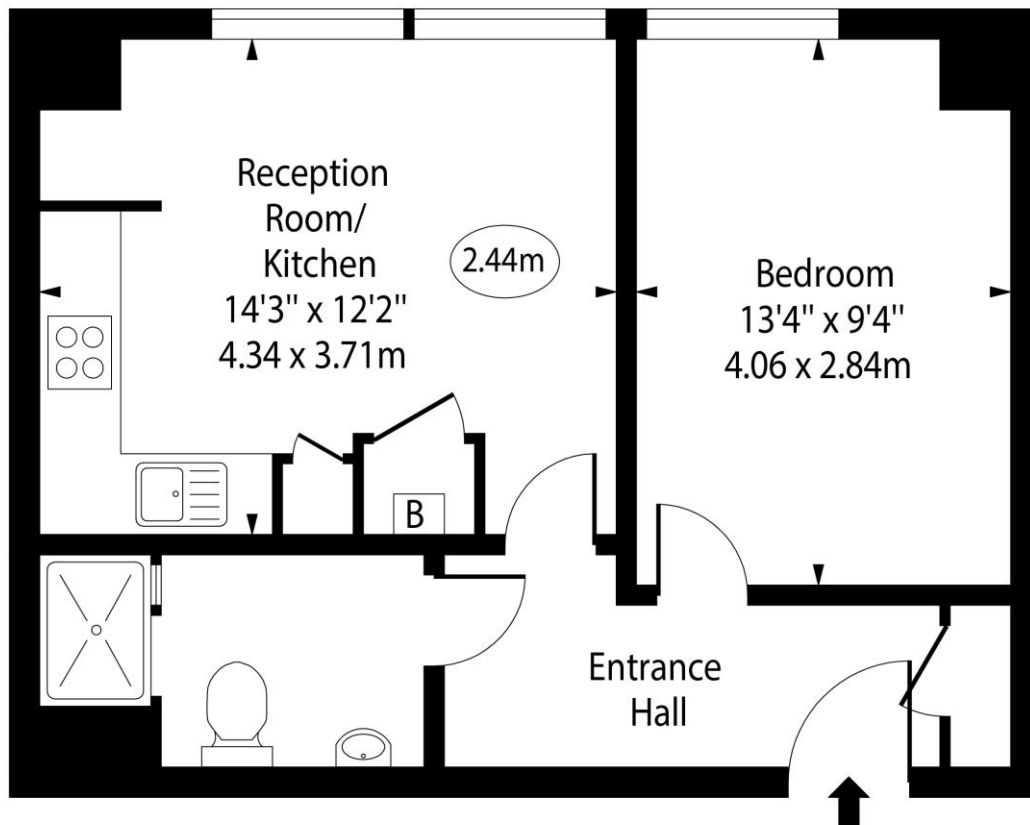
Chestertons Canary Wharf & Greenwich Sales

Harbour Island
 28 Harbour Exchange Square
 London
 E14 9GE
canarywharf@chestertons.co.uk
 020 7510 8300
chestertons.co.uk

Whitby House, Marsh Wall, E14



○ - Ceiling Height



Sixth Floor

Approx Gross Internal Area 425 Sq Ft - 39.48 Sq M

For Illustration Purposes Only - Not To Scale

www.goldlens.co.uk

Ref. No. 027142K

