



# Wharfside Point South

4 Prestons Road, E14

Asking Price £325,000

A spacious one-bedroom apartment on the 21st floor of Wharfside Point South. Boasting 578 sqft of internal space, a private balcony with East facing views, this property will be a popular choice for first time buyers.



# Wharfside Point South

4 Prestons Road, E14

- Spacious one bedroom apartment
- Private balcony
- Access to communal roof terrace
- 24 hour concierge
- Lift
- Very close to Blackwall DLR station
- EWS1 -A2
- Parking





This spacious one bedroom apartment offers over 578 sqft of space with amazing views from its floor to ceiling windows and private balcony. The open plan living and kitchen creates a nice living space. The property also benefits from access to a communal roof terrace, 24 hour concierge and parking.

Blackwall DRL station is opposite the development providing swift access to Canary Wharf and The City.

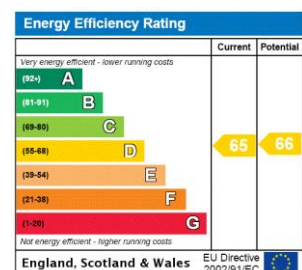
**Tenure:** Leasehold 981 years 10 months

**Service Charge:** £4152 approx.

**Ground Rent:** £250 doubling every 25th anniversary of the Commencement Date for the first 100 years

**Council Tax Band:** C

**Local Authority:** Tower Hamlets



### *Chestertons Canary Wharf & Greenwich Sales*

Harbour Island

28 Harbour Exchange Square

London

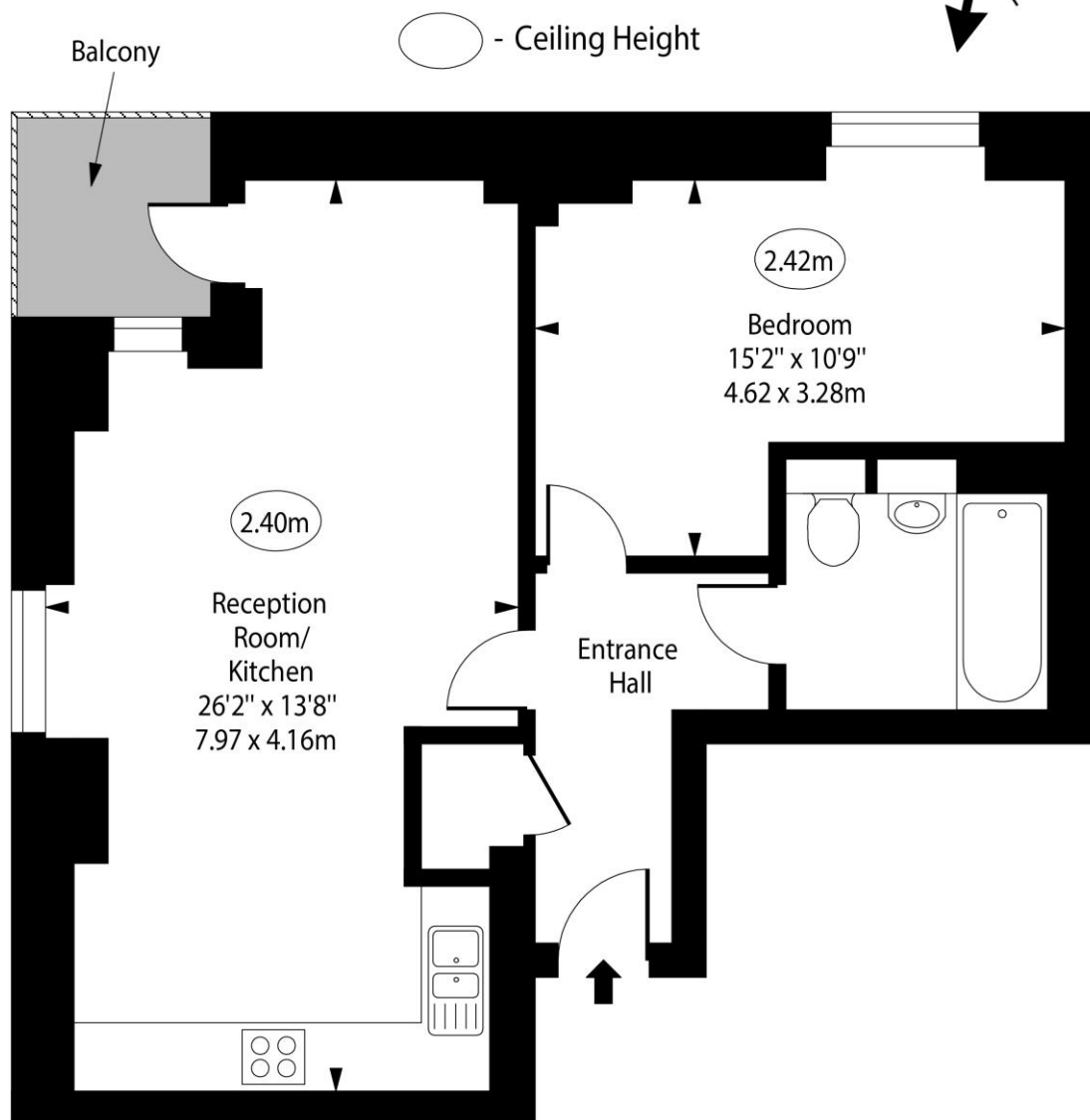
E14 9GE

canarywharf@chestertons.co.uk

020 7510 8300

chestertons.co.uk

# Wharfside Point South, Prestons Road, E14



Twenty First Floor

Approx Gross Internal Area      578 Sq Ft - 53.70 Sq M

For Illustration Purposes Only - Not To Scale

[www.goldlens.co.uk](http://www.goldlens.co.uk)

Ref. No. 022222R

