



Antilles Bay Apartments

3 Lawn House Close, E14

Asking Price £425,000

A 1 bedroom, 2 bathroom apartment offering excellent views of the Docks and Canary Wharf. Additional features include allocated underground parking, separate kitchen and balcony. Located next to the Canary Wharf Centre and all its amenities.



Antilles Bay Apartments

3 Lawn House Close, E14

- Large 1 Bedroom Apartment
- 610sq ft of Internal Living Space
- 2 Bathrooms (1 En-Suite)
- Excellent Views Of The Dock and Canary Wharf
- Allocated Parking
- No Onward Chain
- Share of Freehold
- EWS1 -B2 status - Lender comfort letter available



A one bedroom, two-bathroom apartment located in Antilles Bay Apartments offering excellent views of the Docks and Canary Wharf. Additional features underground parking, separate kitchen, balcony with dock views and is within easy reach of South Quay DLR Station and a short distance to Canary Wharf and all of its amenities. The residents of Antilles Bay own a share of the freehold and the building is managed by tenant's nominated management company.

The EWS1 status is B2, which means there will be some upcoming works on the building. The seller has a comfort letter from Galliard homes to confirm these cost will not be passed onto leaseholders.

Tenure: Share of Freehold
Service Charge: £4,016 pa approx.
Ground Rent: N/A
Local Authority: Tower Hamlets
Council Tax Band: E

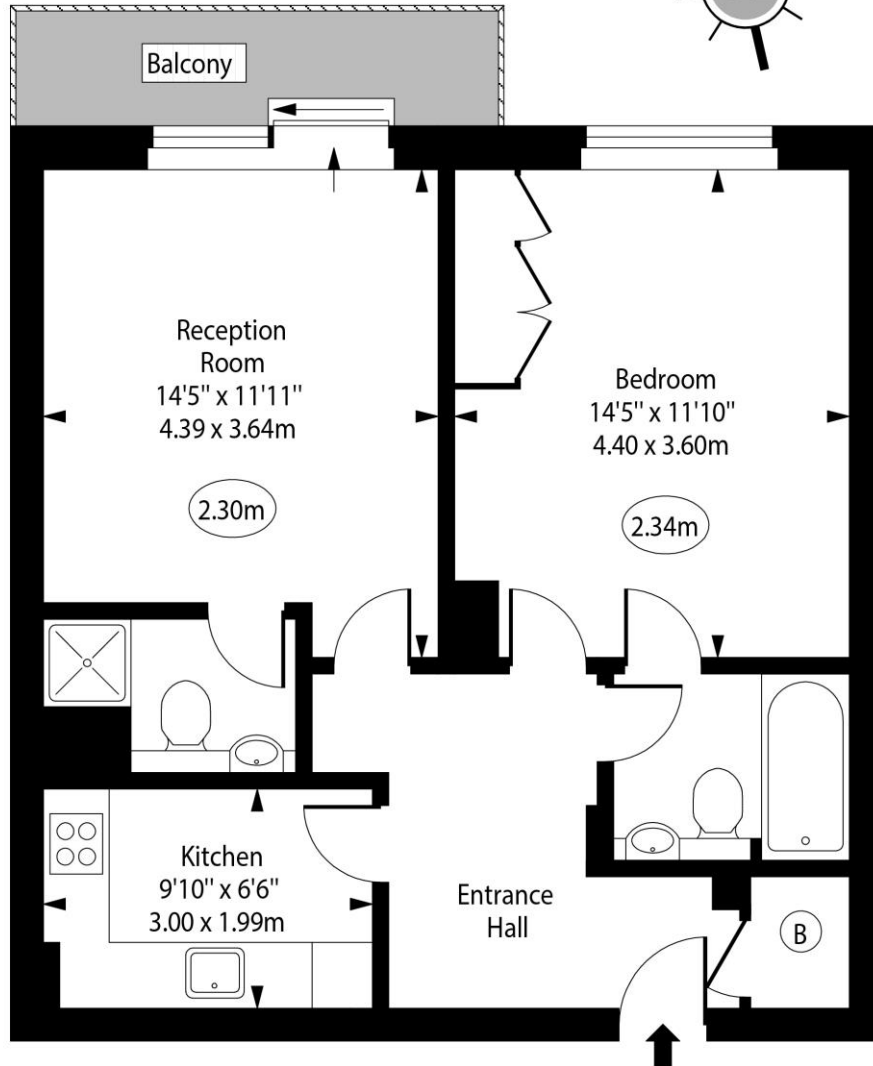
Energy Efficiency Rating		
	Current	Potential
Very energy efficient - lower running costs		
(92-100) A		
(81-91) B	86	86
(69-80) C		
(55-68) D		
(39-54) E		
(21-38) F		
(1-20) G		
Not energy efficient - higher running costs		
England, Scotland & Wales	EU Directive 2002/91/EC	

Chestertons Canary Wharf & Greenwich Sales

Harbour Island
 28 Harbour Exchange Square
 London
 E14 9GE
 canarywharf@chestertons.co.uk
 020 7510 8300
 chestertons.co.uk

Antilles Bay Apartments, Lawn House Close, E14

○ - Ceiling Height



First Floor

Approx Gross Internal Area 610 Sq Ft - 56.67 Sq M

For Illustration Purposes Only - Not To Scale

www.goldlens.co.uk

Ref. No. 024784F

