



Gainsborough House

Cassilis Road, E14

Asking Price £500,000

This stunning apartment in Gainsborough House offers modern living in the heart of Canary Wharf. Featuring two spacious bedrooms and two well-appointed bathrooms, this property is perfect for professionals or small families.

The semi-separate kitchen comes equipped with in-built appliances, ample countertop space, and generous storage, making it a joy for home cooking and entertaining. The large reception room provides a bright and inviting space, opening onto a private balcony that overlooks the internal courtyard.

Located just a short walk from South Quay DLR station and Canary Wharf Underground station, this property offers excellent transport links. Gainsborough House is part of a prestigious development with exclusive amenities, including a gym, jacuzzi, and swimming pool, as well as the convenience and security of a 24-hour concierge service.

Experience the best of urban living in this stylish and well-connected home.

CHESTERTONS



Gainsborough House

Cassilis Road, E14

- 2 Bedrooms
- 2 bathrooms
- 24 Hour Concierge
- Gym Facilities
- Swimming pool
- Balcony



Tenure: Leasehold 975 years 11 months

Service Charge: £4706.3 per annum

Ground Rent: £350 per annum

Local Authority: Tower Hamlets

Council Tax Band: E

Energy Efficiency Rating		
	Current	Potential
Very energy efficient - lower running costs		
(92-100) A		
(81-91) B	81	82
(69-80) C		
(55-68) D		
(39-54) E		
(21-38) F		
(1-20) G		
Not energy efficient - higher running costs		
England, Scotland & Wales		EU Directive 2002/91/EC

Chestertons Surrey Quays Sales

2 Plough Way

London

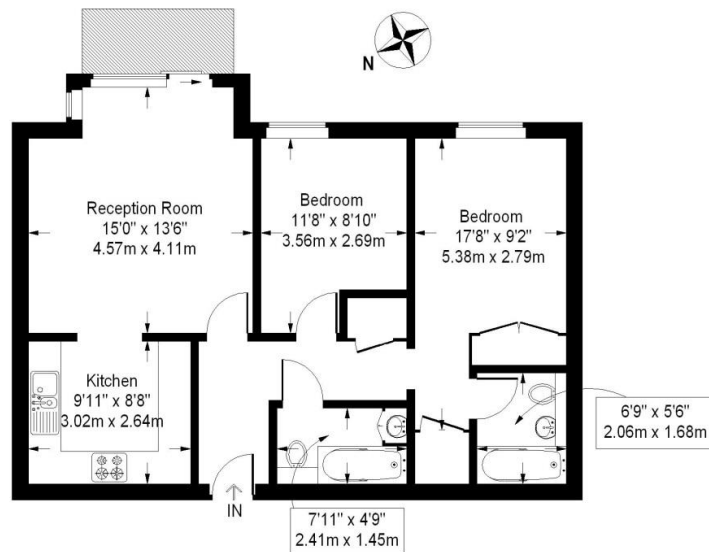
SE16 2EU

+44 (0)20 7378 0644

chestertons.co.uk

Gainsborough House

Approximate Gross Internal Area = 66.6 sq m / 717 sq ft



Second Floor

This plan is for layout guidance only. Not drawn to scale unless stated.
Windows and door openings are approximate. Whilst every care is taken in the preparation of this plan, please check all dimensions, shapes and compass bearings before making any decisions reliant upon them. The copyrights of this image are the property of Madley Property Services Ltd. (ID223007)