



Cumberland Mills Square

London, E14

Asking Price £500,000

Quaint 2-bed apartment located in Cumberland Mills Square development with direct river views. Open-plan kitchen/reception room with breakfast bar, private patio, and parking space.



Cumberland Mills Square

London, E14

- 2 bedroom apartment
- Close to Island Gardens DLR
- Close to Greenwich foot tunnel
- Private patio with direct river views
- On-Site Porter
- Parking space
- Leasehold plus Share of Freehold - 997years approx.. remaining
- Service charge - £4609 pa approx



Situated just a stone's throw away from Island Gardens DLR, this ground floor apartment offers a prime location for those seeking convenience and style. With close proximity to the Greenwich foot tunnel, you can easily access the vibrant Greenwich market and iconic Cutty Sark, making every day an adventure.

Featuring two bedrooms, this modern residence exudes a perfect blend of comfort and sophistication. Step into the contemporary interior, complete with all the amenities you desire for a seamless living experience. The property also boasts a charming patio area, ideal for enjoying your morning brew or hosting al fresco gatherings.

Benefitting from a river side setting and the presence of a dedicated porter/caretaker, this purpose-built haven is ready to welcome you home. Don't miss out on the opportunity to make this waterside retreat yours. Book a viewing today.

Tenure: Share of Freehold 997 years 1 months

Service Charge: £4608.62 approx

Ground Rent: £0

Local Authority: Tower Hamlets

Council Tax Band: E

Energy Efficiency Rating		
	Current	Potential
Very energy efficient - lower running costs		
(92-100) A		
(81-91) B		
(69-80) C	77	77
(55-68) D		
(39-54) E		
(21-38) F		
(1-20) G		
Not energy efficient - higher running costs		
England, Scotland & Wales		EU Directive 2002/91/EC

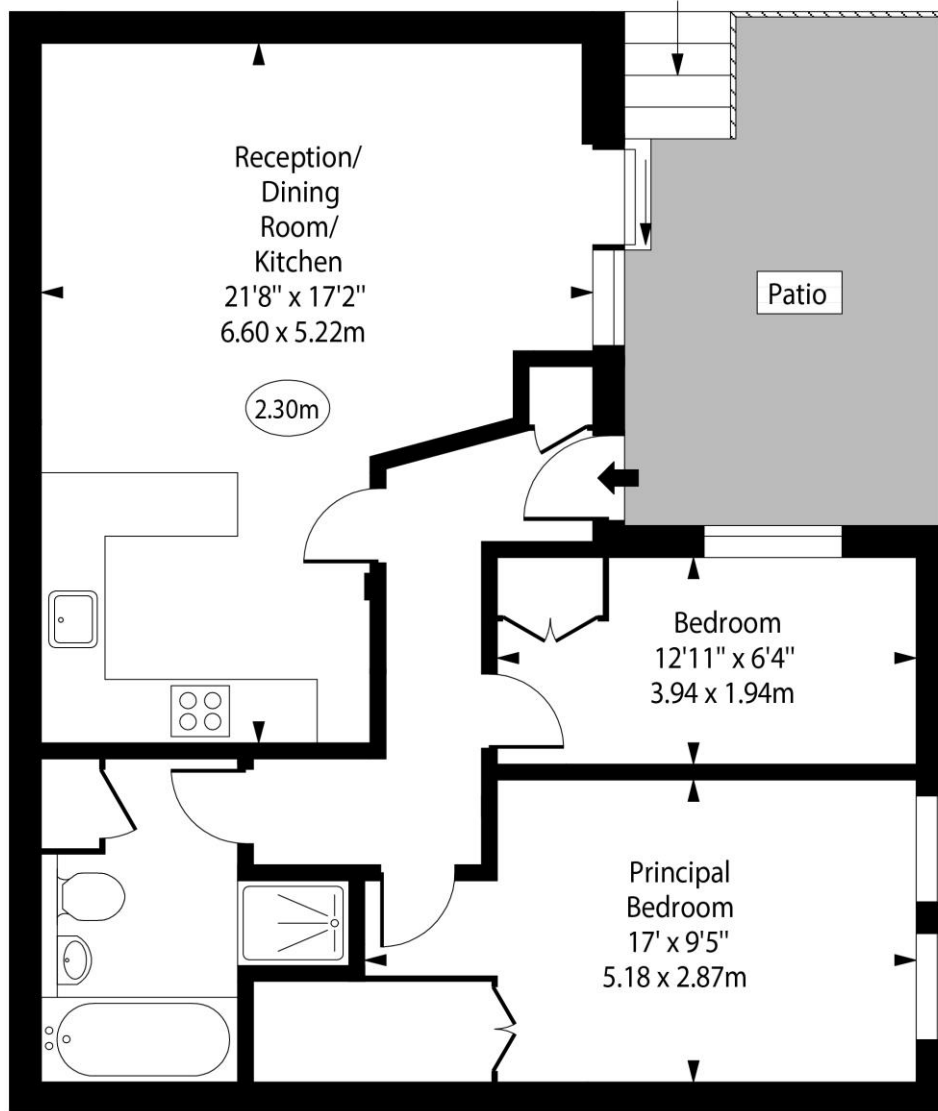
Chestertons Canary Wharf & Greenwich Sales

Harbour Island
 28 Harbour Exchange Square
 London
 E14 9GE
canarywharf@chestertons.co.uk
 020 7510 8300
chestertons.co.uk

Cumberland Mills Square, E14



○ - Ceiling Height



Ground Floor

Approx Gross Internal Area 710 Sq Ft - 65.96 Sq M

For Illustration Purposes Only - Not To Scale

www.goldlens.co.uk

Ref. No. 026017IG

