



Napier Avenue

London, E14

Asking Price £800,000

A modern 1224sq ft 3 bedroom 2 bathroom end-of-terrace freehold house with a larger than average private garden & off-street parking on Napier Avenue, a quiet road situated very close to The River Thames. Mast House Terrace Pier for Thames Clipper/Uberboat service to central London & beyond is at the end of street. Offered chain-free.

CHESTERTONS



Napier Avenue

London, E14

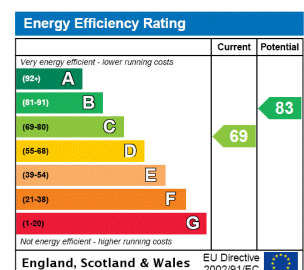
- 1224sq ft 3 bedroom 2 bathroom modern freehold house with integral garage.
- Larger than average private rear garden.
- Off-street parking.
- Located very close to The River Thames & Mast House Terrace Pier.
- Mudchute DLR station is located nearby.
- Offered chain-free.



A well-proportioned, modern 1224sq ft 3 bedroom 2 bathroom end-of-terrace freehold house with a larger than average private garden, integral garage & off-street parking on Napier Avenue, a quiet road on The Isle of Dogs situated very close to The River Thames. Mast House Terrace Pier for Uberboat/Thames Clipper service is at the end of street. Mudchute DLR station is a short & pleasant leafy walk away via the Chapel House Conservation Area.

Offered chain-free with vacant possession.

Tenure: Freehold
Service Charge: nil
Ground Rent: n/a
Local Authority: Tower Hamlets
Council Tax Band: E



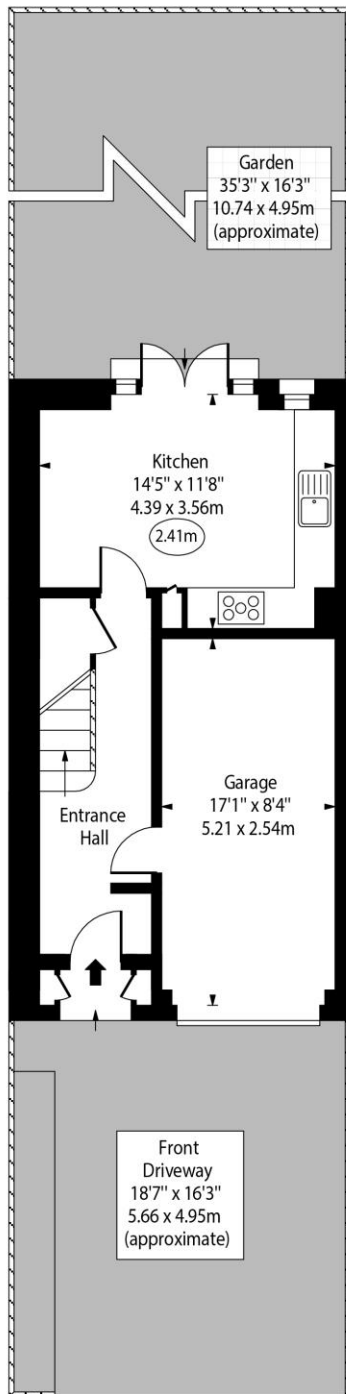
Chestertons Canary Wharf & Greenwich Sales

Harbour Island
28 Harbour Exchange Square
London
E14 9GE
canarywharf@chestertons.co.uk
020 7510 8300
chestertons.co.uk

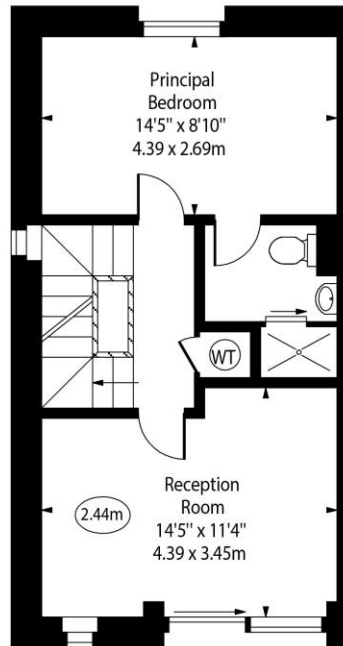
Napier Avenue, E14



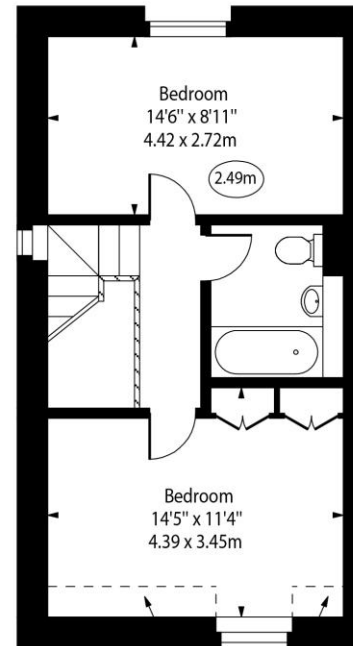
○ - Ceiling Height



Ground Floor



First Floor



Second Floor

Approx Gross Internal Area 1224 Sq Ft - 113.71 Sq M

Approx. Floor Area Including Restricted Heights 1240 Sq Ft - 115.20 Sq M

(Including Garage)

For Illustration Purposes Only - Not To Scale

www.goldlens.co.uk

Ref. No. 025990K

