



Sky View Tower

12 High Street, E15

Offers in excess of £525,000

A stylish three bedroom, two bathroom apartment located on the 10th floor of Skyview Tower offering stunning views of Canary Wharf and the city, as well as Olympic Park.



Sky View Tower

12 High Street, E15

- Three bedroom, two bathroom apartment
- EWS1 compliant A1 rating
- No onward chain
- Communal roof terrace
- Gymnasium,
- Concierge
- Prime location - Close to transport and Westfield Shopping centre
- Long lease



This well-equipped three bedroom apartment features an open plan kitchen lounge area and two contemporary bathrooms.

The complex provides a range of amenities including a concierge, fully equipped gym. Residents can also unwind in the rooftop garden enjoying Panoramic City views. The apartment is conveniently located close to the Queen Elizabeth Olympic Park and the vibrant Westfield shopping centre with numerous shop bars and restaurants.

Excellent transport links are available with Pudding Mill Lane DLR, Stratford International, Stratford underground and Bow Road stations providing easy access across London.

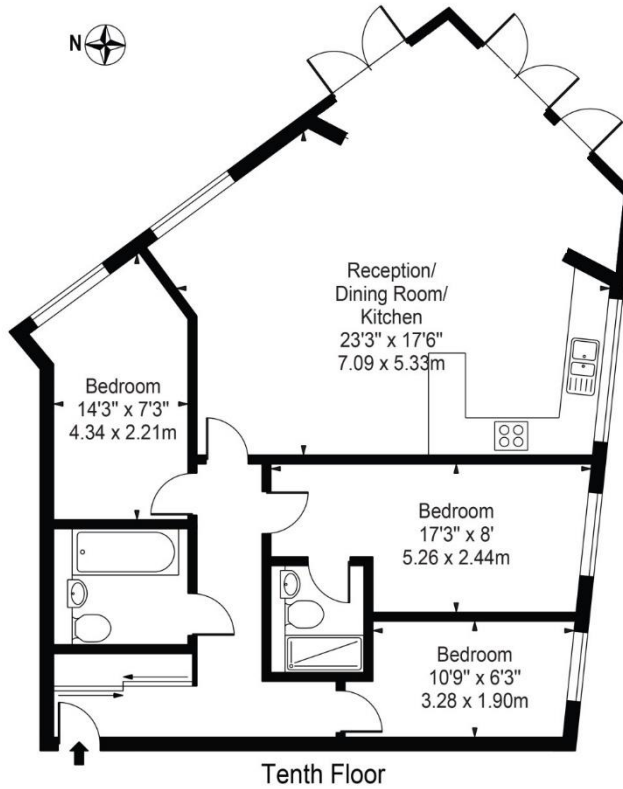
Tenure: Leasehold – 987 years remaining approx.
Service Charge: £4,484pa
Ground Rent: £500pa such sum to double on every twenty fifth anniversary of the Commencement Date for the first 100 years of the Term
Council Tax Band: D
Local Authority: Newham

Energy Efficiency Rating		Current	Potential
Very energy efficient - lower running costs			
(92-100)	A		
(81-91)	B	87	87
(69-80)	C		
(55-68)	D		
(39-54)	E		
(21-38)	F		
(1-20)	G		
Not energy efficient - higher running costs			
England, Scotland & Wales		EU Directive 2002/91/EC	

Chestertons Canary Wharf & Greenwich Sales

Harbour Island
 28 Harbour Exchange Square
 London
 E14 9GE
 canarywharf@chestertons.co.uk
 020 7510 8300
 chestertons.co.uk

Sky View Tower Stratford, E15
Approx. Gross Internal Area 954 Sq Ft - 88.63 Sq M



Tenth Floor

For Illustration Purposes Only - Not To Scale

This floor plan should be used as a general outline for guidance only and does not constitute in whole or in part an offer or contract. Any intending purchaser or lessee should satisfy themselves by inspection, searches, enquiries and full survey as to the correctness of each statement. Any areas, measurements or distances quoted are approximate and should not be used to value a property or be the basis of any sale or let.

