



Galaxy Building

5 Crews Street, E14

Offers in excess of £375,000

A large one bedroom apartment located on the second floor of the Galaxy Building. Featuring a North facing balcony and car parking space, this will be popular choice for first time buyers.



Galaxy Building

5 Crews Street, E14

- Riverside Development
- 24 Hour Concierge Service
- Gym Facilities
- Excellent Transport Links via DLR
- Large Private Balcony



A large one bedroom apartment with 638 sqft of internal space located in The Galaxy Building. Featuring a modern interior, with open-plan kitchen/reception room leading to a North facing balcony. The property also comes with a parking space.

Residents of this gated riverside development enjoy exclusive use of a private riverside gym, the extensive communal gardens and a 24hr on-site concierge for your convenience.

Peacefully located within walking distance of Canary Wharf this well located apartment is also surrounded by small shops and supermarkets. Mudchute and Island Gardens DLR are also close by and the Thames Clipper Service can be found just moments away at Masthouse Pier, ideal for those commuting across the City/Canary Wharf.

Tenure: Leasehold 100 years 11 months

Service Charge: £4400 approx.

Ground Rent: £260 Ground Rent increase every 21 years in line with the conditions in the Lease

Council Tax Band: E

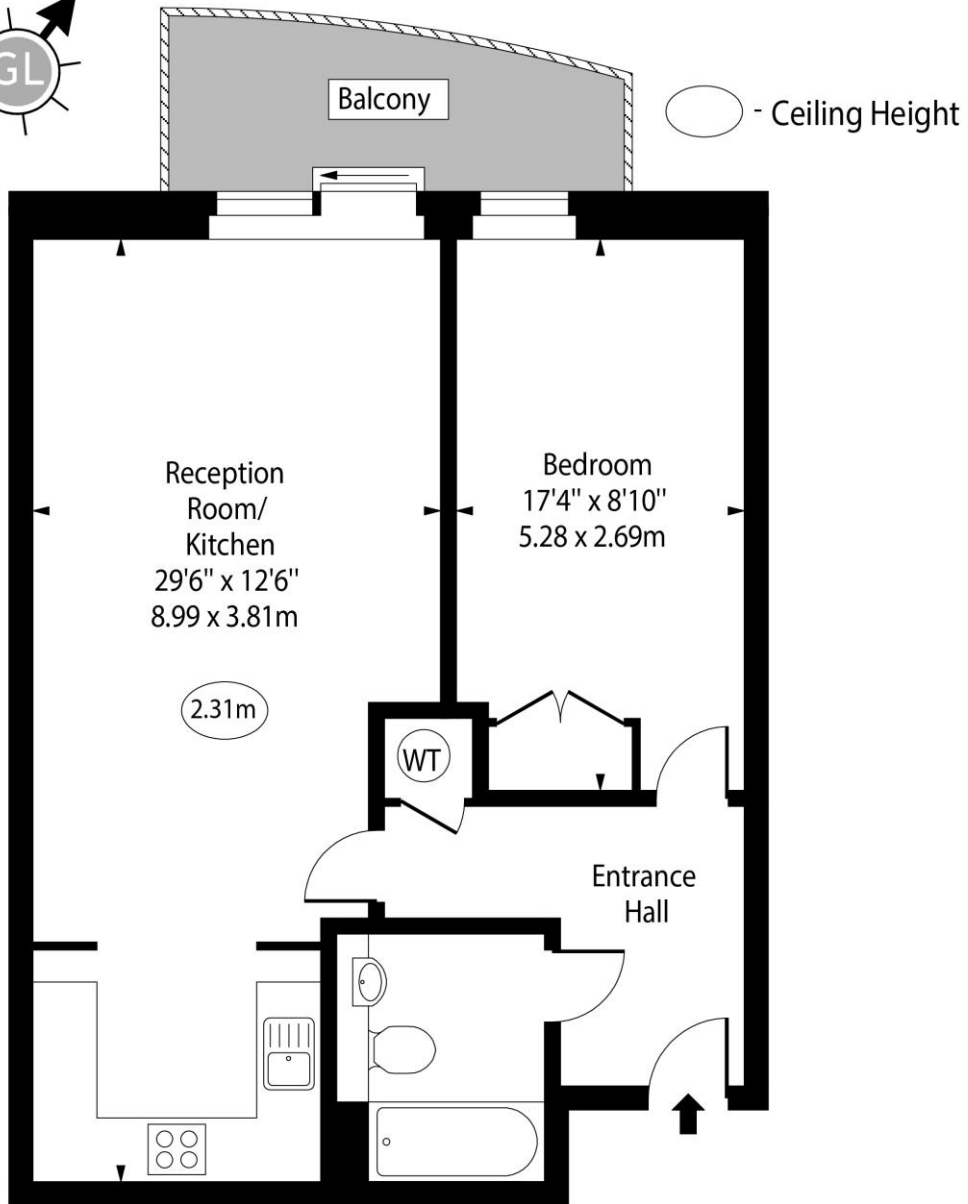
Local Authority: Tower Hamlets

Energy Efficiency Rating		Current	Potential
Very energy efficient - lower running costs			
(92-100)	A		
(81-91)	B	85	87
(69-80)	C		
(55-68)	D		
(39-54)	E		
(21-38)	F		
(1-20)	G		
Not energy efficient - higher running costs			
England, Scotland & Wales		EU Directive 2002/91/EC	

Chestertons Canary Wharf & Greenwich Sales

Harbour Island
 28 Harbour Exchange Square
 London
 E14 9GE
 canarywharf@chestertons.co.uk
 020 7510 8300
 chestertons.co.uk

Galaxy Building, Crews Street, E14



Second Floor

Approx Gross Internal Area 638 Sq Ft - 59.27 Sq M

For Illustration Purposes Only - Not To Scale

www.goldlens.co.uk

Ref. No. 021917K

