



Streamlight Tower

9 Province Square, E14

Offers in excess of £500,000

A modern and well-presented 2 bedroom, 2 bathroom apartment located on the 13th floor of Streamlight Tower with stunning views of the Canary Wharf skyline. The building has a concierge and Blackwall DLR station is close by.



Streamlight Tower

9 Province Square, E14

- 13th floor 2 bedroom, 2 bathroom apartment with balcony
- Stunning views of the Canary Wharf skyline
- Modern development with daytime concierge
- Located close to Blackwall DLR station, Elizabeth Line station & Canary Wharf.
- Offered chain-free.



A modern well-presented 2 bedroom, 2 bathroom apartment in Streamlight Tower located close to Blackwall DLR station. The apartment benefits from a dual-aspect, open-plan kitchen / reception and an adjoining, sizeable balcony that wraps around the West and South aspect of the lounge.

Streamlight Tower was completed in 2012 and has recently had its exterior upgraded to achieve an A1-rated EWS1 and full compliance with the latest PAS9980 fire safety standards. The development benefits from a daytime concierge.

The development is located within 250m of Blackwall DLR station for easy access to The City, within approximately 1 km of the Elizabeth Line station, & Canary Wharf's business district, shopping centre & Jubilee Line station.

Offered chain-free.

- Tenure:** Leasehold - 985 years remaining approx.
- Service Charge:** £5,255pa approx.
- Ground Rent:** £350pa increased by the sum of £350 on each 25th anniversary of the commencement date of the Term
- Council Tax Band:** F
- Local Authority:** Tower Hamlets

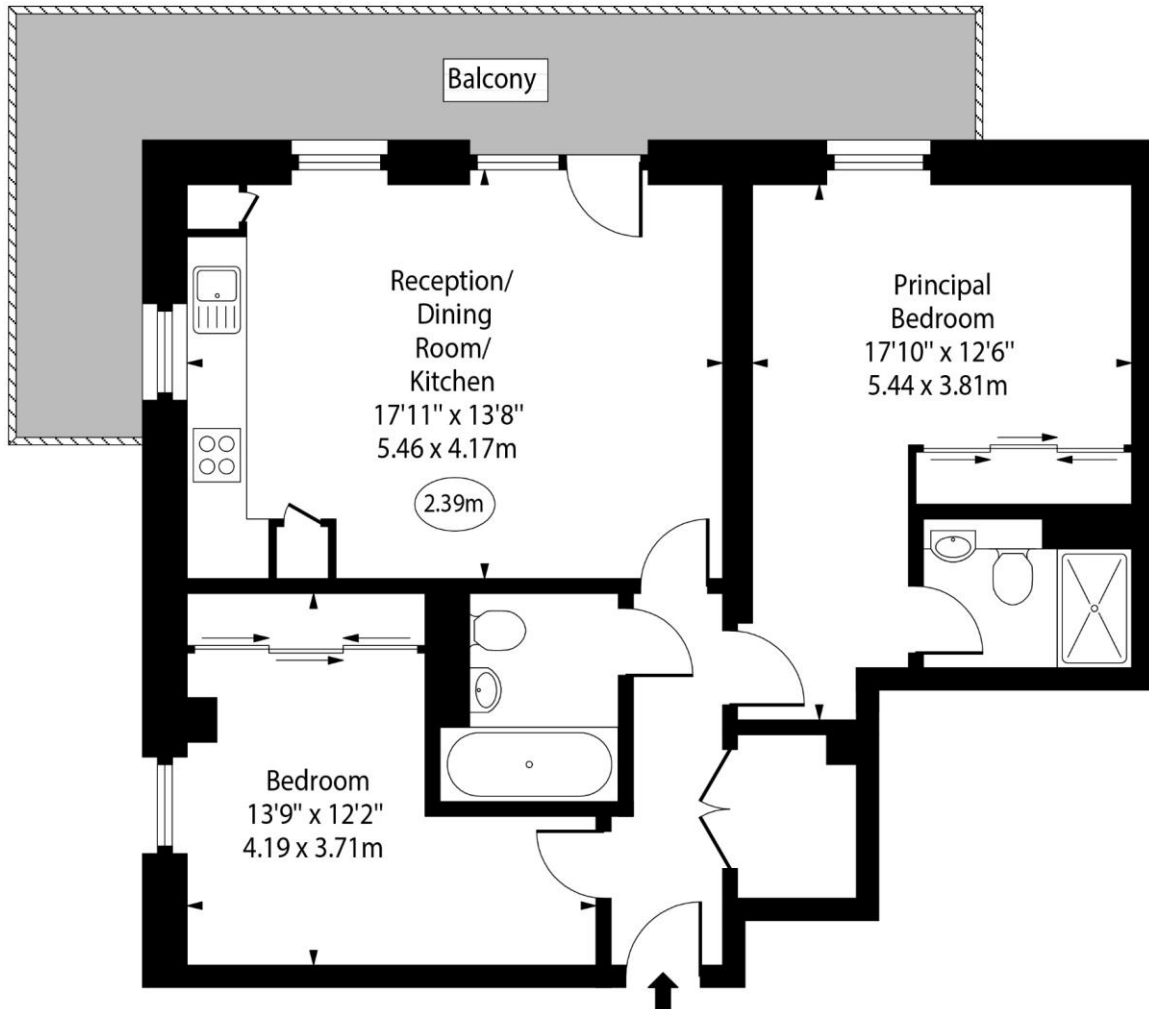
Energy Efficiency Rating		Current	Potential
Very energy efficient - lower running costs			
(92-)	A		
(81-91)	B		
(69-80)	C	78	78
(55-68)	D		
(39-54)	E		
(21-38)	F		
(1-20)	G		
Not energy efficient - higher running costs			
England, Scotland & Wales		EU Directive 2002/91/EC	

Chestertons Canary Wharf & Greenwich Sales

Harbour Island
 28 Harbour Exchange Square
 London
 E14 9GE
 canarywharf@chestertons.co.uk
 020 7510 8300
 chestertons.co.uk

Streamlight Tower, Province Square, E14

○ - Ceiling Height



Thirteenth Floor

Approx Gross Internal Area 740 Sq Ft - 68.75 Sq M

For Illustration Purposes Only - Not To Scale

www.goldlens.co.uk

Ref. No. 024854K

