



Waterford Court

7 Turnberry Quay, E14

Asking Price £550,000

This stunning two-bedroom apartment is ideally located just moments away from Canary Wharf. Boasting two double bedrooms, open plan lounge with modern kitchen, sleek bathroom and two private balconies.



Waterford Court

7 Turnberry Quay, E14

- Large two bedroom, 792 sq ft apartment
- Dockside development
- Modern open-plan reception/kitchen
- Two private balconies
- Short walking distance to Crossharbour DLR



Boasting a desirable dockside location, this modern two bedroom, 792 sq ft apartment features stylish open-plan living space and two private balconies.

Turnbery Quay is an enviable location moments to shops, bars, transport links and facilities of Canary Wharf. Green open-spaces of Mudchute Park are close by.

Tenure: Leasehold 117 years 5 months

Service Charge: £5247 approx.

Ground Rent: £300 doubling on every subsequent 25th anniversary of the Commencement Date.

Council Tax Band: F

Local Authority: Tower Hamlets

Energy Efficiency Rating		Current	Potential
Very energy efficient - lower running costs	A		
(91-101)	B	83	83
(81-90)	C		
(61-80)	D		
(31-60)	E		
(21-30)	F		
(1-20)	G		
Not energy efficient - higher running costs			
England, Scotland & Wales		EU Directive 2002/91/EC	

Chestertons Canary Wharf & Greenwich Sales

Harbour Island

28 Harbour Exchange Square

London

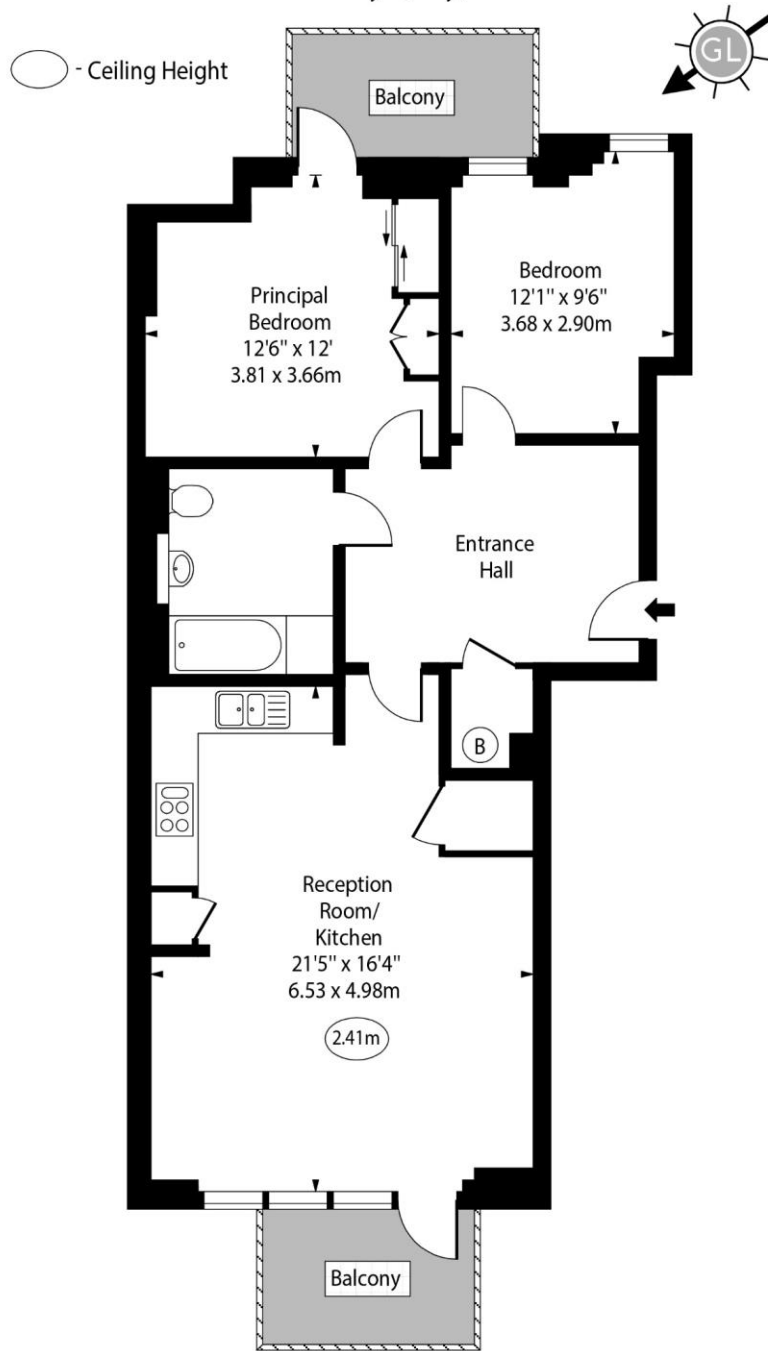
E14 9GE

canarywharf@chestertons.co.uk

020 7510 8300

chestertons.co.uk

Waterford Court,
Turnberry Quay, E14



First Floor

Approx Gross Internal Area 792 Sq Ft - 73.58 Sq M

For Illustration Purposes Only - Not To Scale

www.goldlens.co.uk

Ref. No. 024764JU

